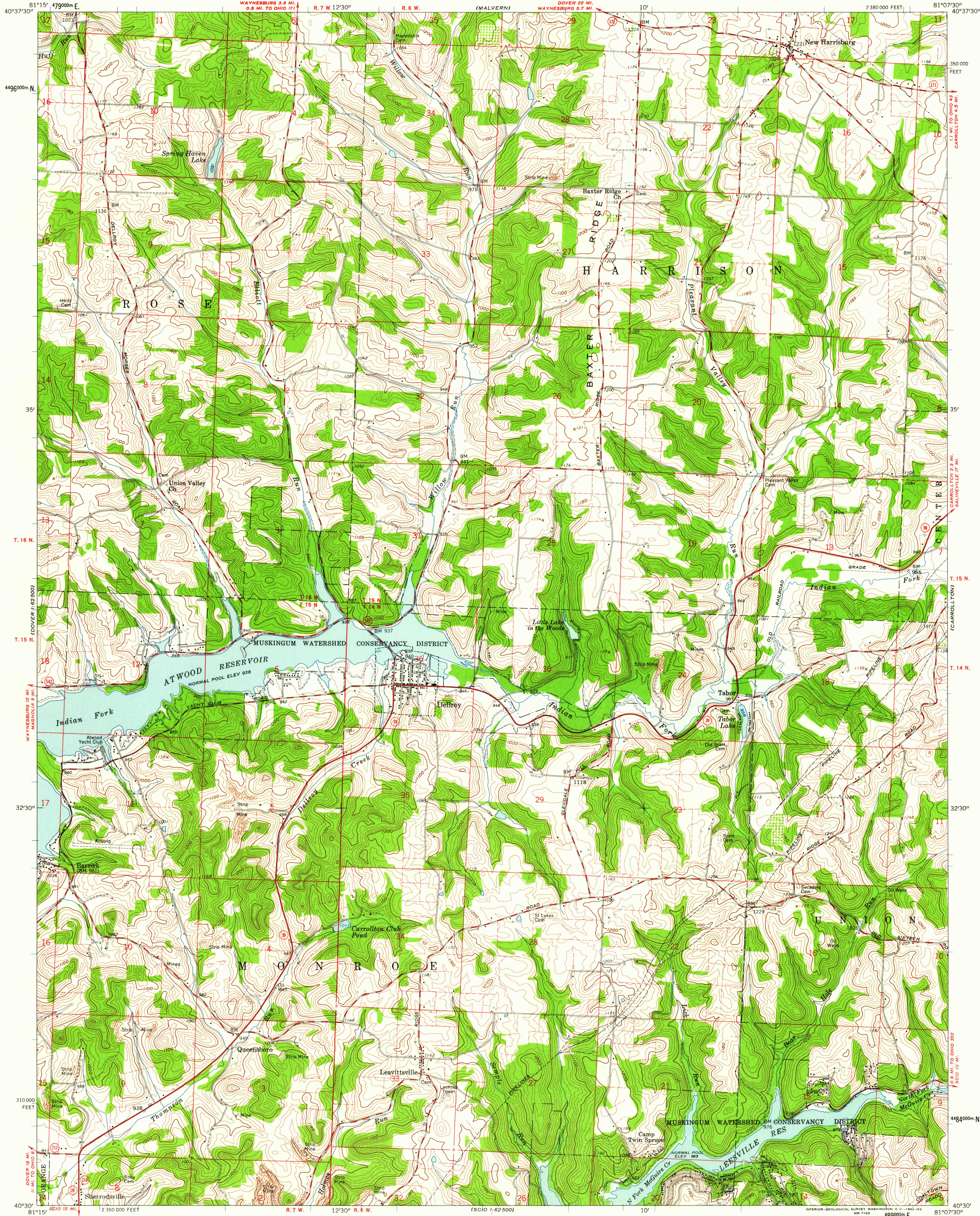
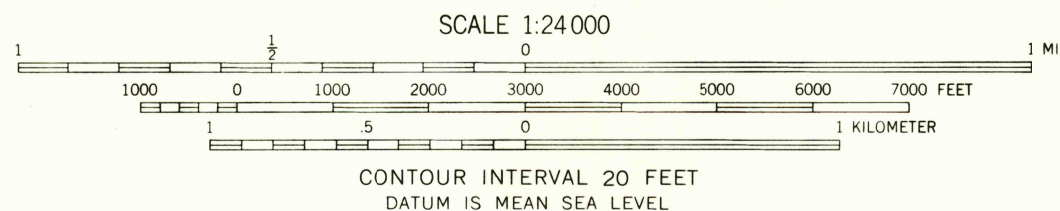


UNITED STATES
DEPARTMENT OF THE INTERIOR
GEOLOGICAL SURVEY

DELLROY QUADRANGLE
OHIO—CARROLL CO.
7.5 MINUTE SERIES (TOPOGRAPHIC)
SW 1/4 CARROLLTON 15' QUADRANGLE



Mapped, edited, and published by the Geological Survey
Control by USGS and USC&GS
Topography from aerial photographs by photogrammetric methods
Aerial photographs taken 1958. Field check 1959
Polyconic projection. 1927 North American datum
10,000-foot grid based on Ohio coordinate system, north zone
1000-meter Universal Transverse Mercator grid ticks,
zone 17, shown in blue
Areas covered by dashed light-blue pattern are subject to
controlled inundation to 941 feet in Atwood Reservoir and
978 feet in Leesville Reservoir
Fine red dashed lines indicate selected fence and field lines where
generally visible on aerial photographs. This information is unchecked
Land lines based on the Ohio River Base
Entire area lies within the Old Seven Ranges



THIS MAP COMPLIES WITH NATIONAL MAP ACCURACY STANDARDS
FOR SALE BY U.S. GEOLOGICAL SURVEY, WASHINGTON 25, D. C.
A FOLDER DESCRIBING TOPOGRAPHIC MAPS AND SYMBOLS IS AVAILABLE ON REQUEST

ROAD CLASSIFICATION
Heavy-duty ——— Light-duty ———
Medium-duty ——— Unimproved dirt ———
State Route ———



USGS
Historical File
Topographic Division

DELLROY, OHIO
SW 1/4 CARROLLTON 15' QUADRANGLE
N 4030—W 8107.5/7.5

1959

U.S.G.S.
FILE COPY
TOPOGRAPHIC DIVISION

SEP 22 1961
2620