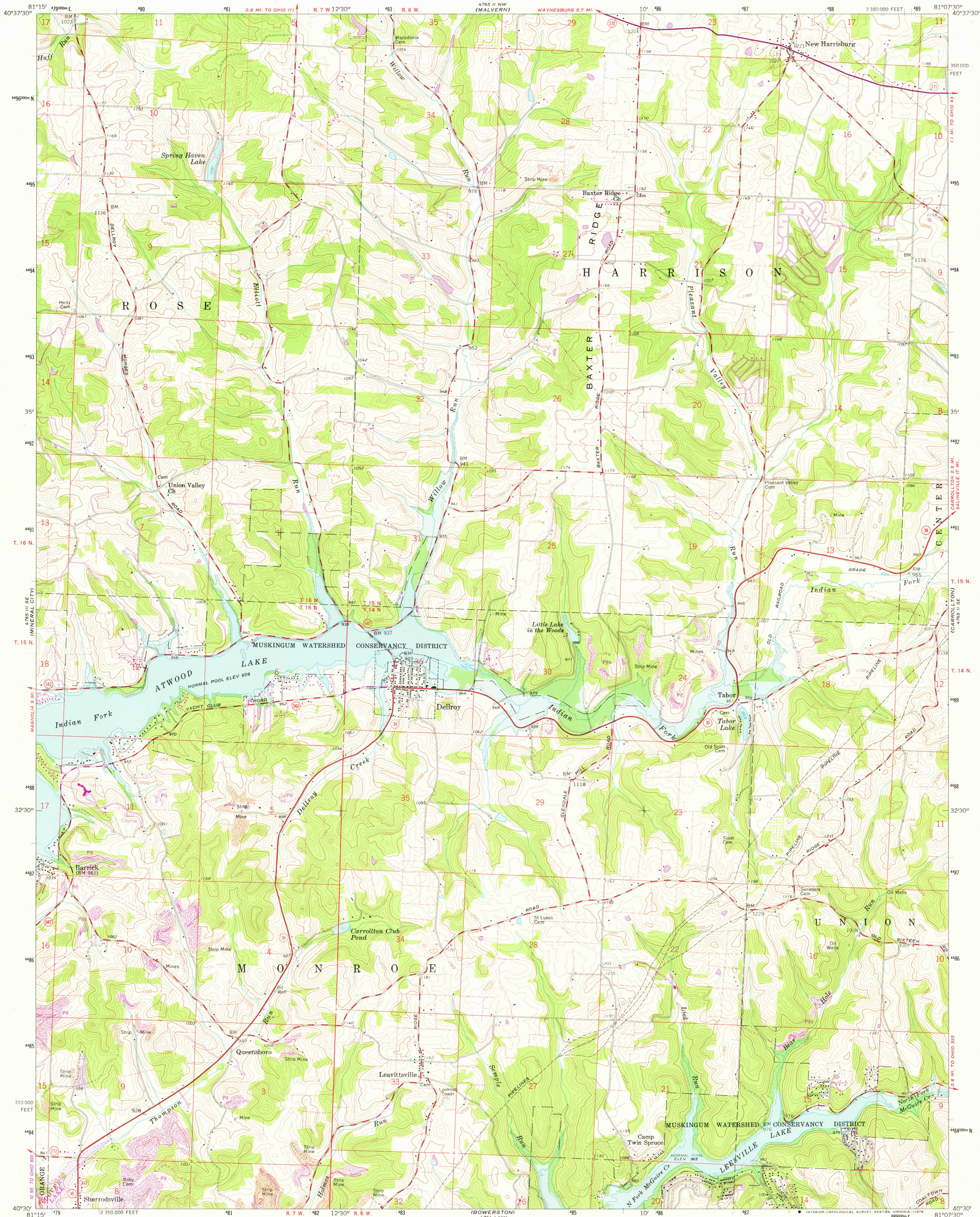


UNITED STATES
DEPARTMENT OF THE INTERIOR
GEOLOGICAL SURVEY

DELLROY QUADRANGLE
OHIO-CARROLL CO.
7.5 MINUTE SERIES (TOPOGRAPHIC)



Mapped, edited, and published by the Geological Survey
Control by USGS and USCGS

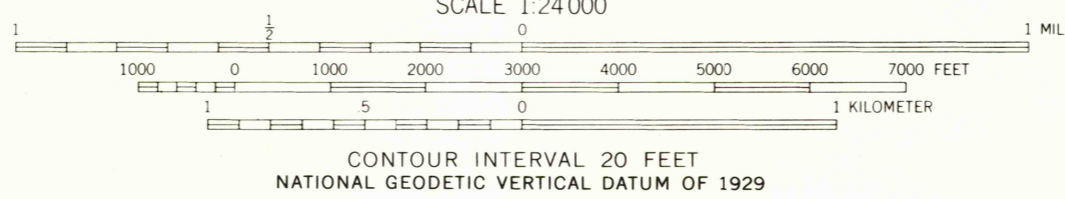
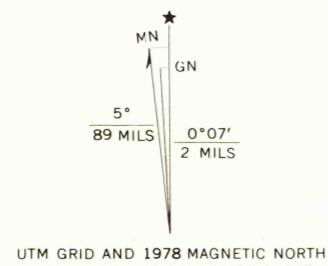
Topography from aerial photographs by photogrammetric methods
Aerial photographs taken 1958. Field check 1959

Polyconic projection. 1927 North American datum
10,000-foot grid based on Ohio coordinate system, north zone
1000-meter Universal Transverse Mercator grid ticks,
zone 17, shown in blue

Areas covered by dashed light-blue pattern are subject to
controlled inundation to 941 feet in Atwood Lake and
978 feet in Leeville Lake

Fine red dashed lines indicate selected fence and field lines where
generally visible on aerial photographs. This information is unchecked

Land lines based on the Ohio River Base
Entire area lies within the Old Seven Ranges



ROAD CLASSIFICATION
Heavy-duty ——— Light-duty ———
Medium-duty ——— Unimproved dirt ———
State Route —○—

USGS
Historical File
Topographic Division
DELLROY, OHIO
N4030-W8107.5/7.5

SEP 19 1978

THIS MAP COMPLIES WITH NATIONAL MAP ACCURACY STANDARDS
FOR SALE BY U.S. GEOLOGICAL SURVEY, RESTON, VIRGINIA 22092
A FOLDER DESCRIBING TOPOGRAPHIC MAPS AND SYMBOLS IS AVAILABLE ON REQUEST

Revisions shown in purple compiled in cooperation with
State of Ohio agencies from aerial photographs taken
1971 and 1976. Map edited 1978
This information not field checked

1959
PHOTOREVISED 1971 AND 1978
AMS 4765 II SW-SERIES V852