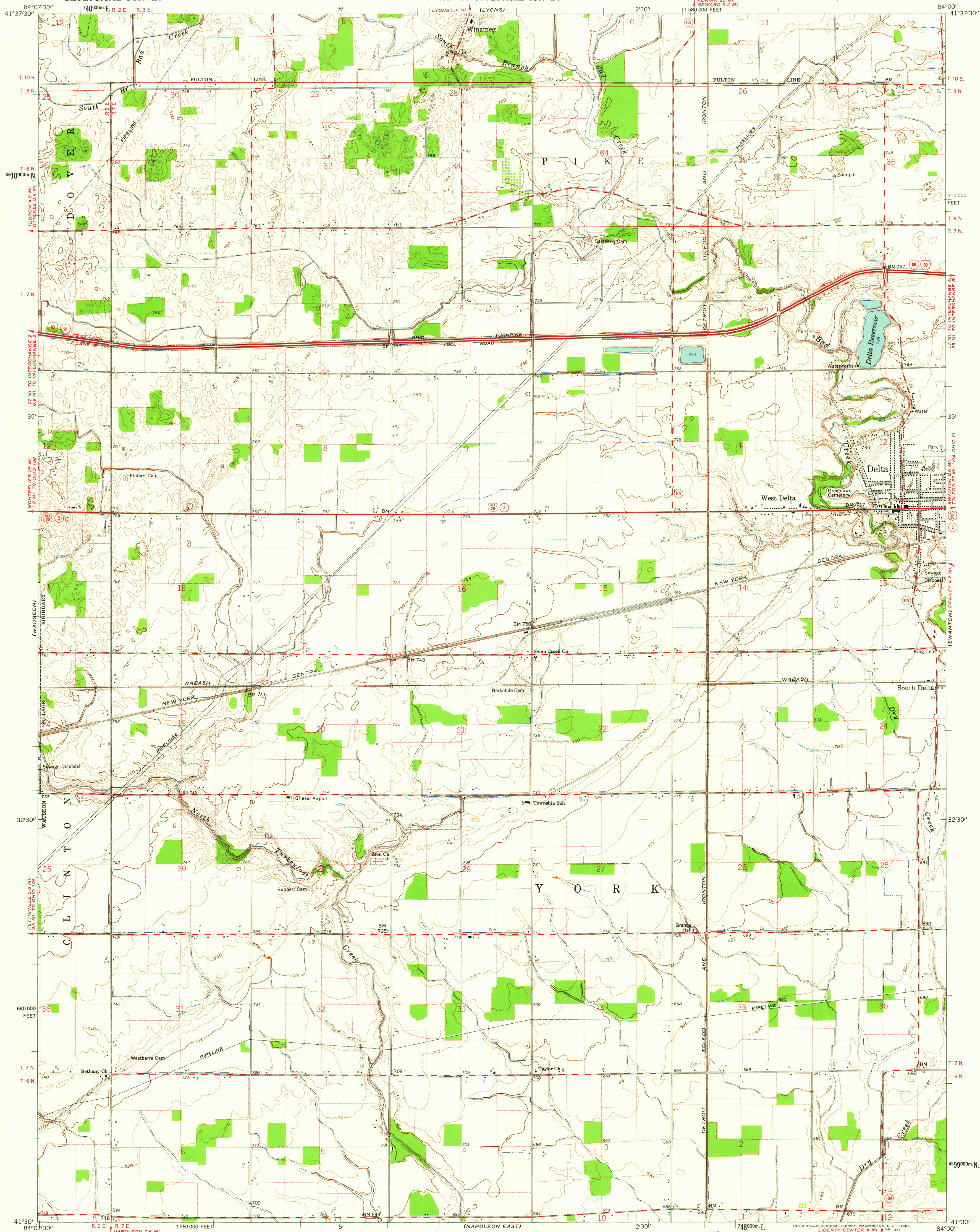


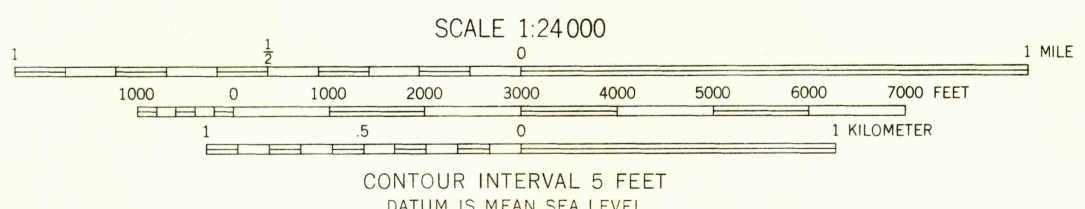
UNITED STATES
DEPARTMENT OF THE INTERIOR
GEOLOGICAL SURVEY

STATE OF OHIO
DEPARTMENT OF HIGHWAYS
DEPARTMENT OF NATURAL RESOURCES
DIVISION OF GEOLOGICAL SURVEY

DELTA QUADRANGLE
OHIO—FULTON CO.
7.5 MINUTE SERIES (TOPOGRAPHIC)
SE 1/4 WAUSEON 15' QUADRANGLE



Mapped, edited, and published by the Geological Survey
Control by USGS and USC&GS
Topography from aerial photographs by photogrammetric methods
Aerial photographs taken 1959-1960. Field check 1960
Polyconic projection. 1927 North American datum
10,000-foot grid based on Ohio coordinate system, north zone
1000-meter Universal Transverse Mercator grid ticks,
zone 16, shown in blue
Land lines south of Fulton Line based on the First Principal Meridian
Land lines north of Fulton Line based on the Michigan Meridian
Fire red dashed lines indicate selected fence and field lines where
generally visible on aerial photographs. This information is unchecked



USGS
Historical File
Topographic Division

ROAD CLASSIFICATION
Heavy-duty ——— Light-duty ———
Medium-duty ——— Unimproved dirt ———
Interstate Route ——— U.S. Route ——— State Route ———



DELTA, OHIO
SE 1/4 WAUSEON 15' QUADRANGLE
N 4130—W 8400/7.5

1960

U.S.G.S.
FILE COPY
TOPOGRAPHIC DIVISION

MAR 19 1962