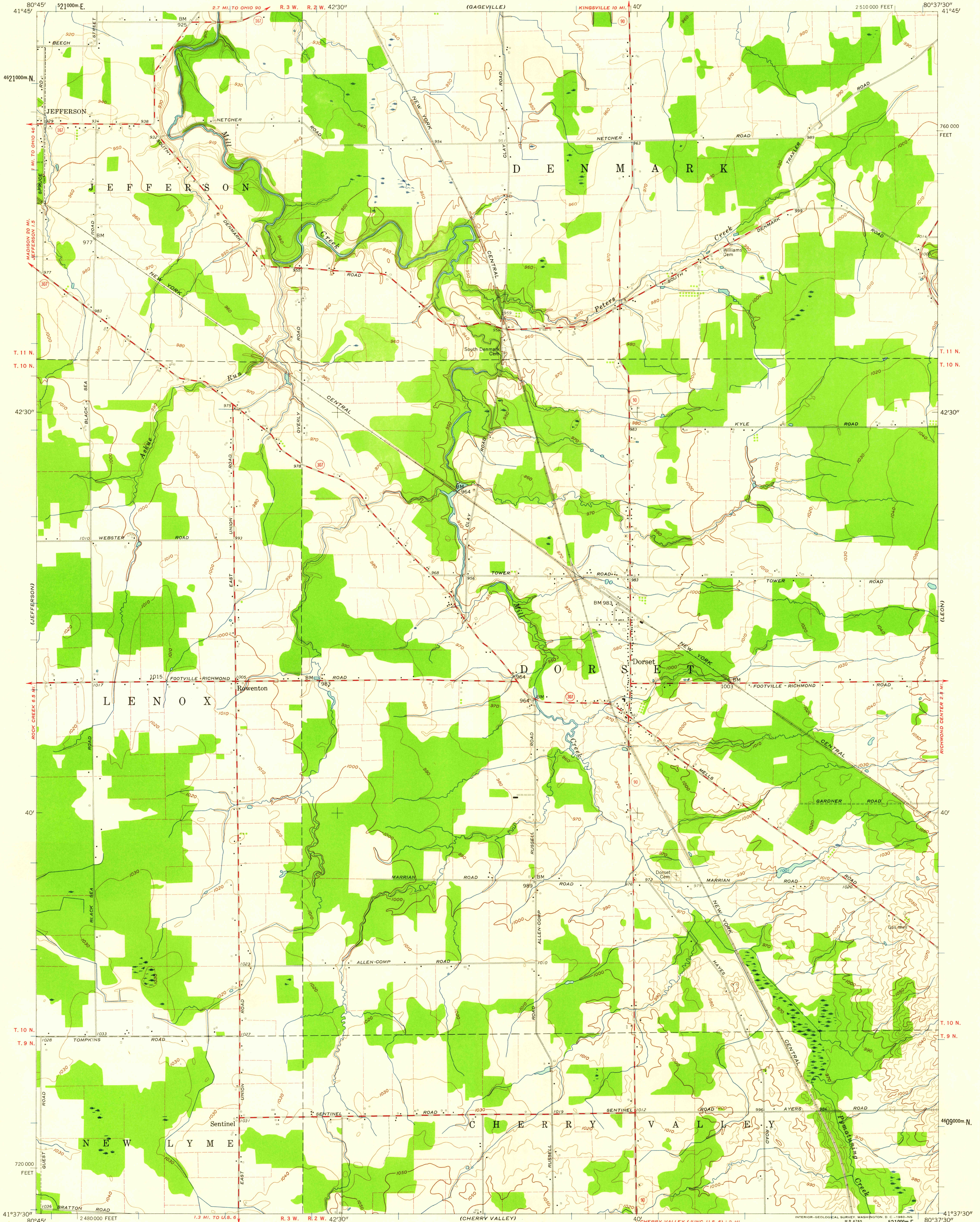


UNITED STATES
DEPARTMENT OF THE INTERIOR
GEOLOGICAL SURVEY

STATE OF OHIO
DEPARTMENT OF HIGHWAYS
DEPARTMENT OF NATURAL RESOURCES
DIVISION OF GEOLOGICAL SURVEY

DORSET QUADRANGLE
OHIO-ASHTABULA CO.
7.5 MINUTE SERIES (TOPOGRAPHIC)
NW 1/4 AND OVER 15' QUADRANGLE

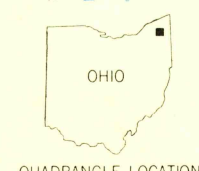


Mapped, edited, and published by the Geological Survey
Control by USGS and USC&GS
Culture and drainage in part compiled from aerial photographs
taken 1952. Topography by planetable surveys 1959
Polyconic projection. 1927 North American datum
10,000-foot grid based on Ohio coordinate system, north zone
1000-meter Universal Transverse Mercator grid ticks,
zone 17, shown in blue
Fine red dashed lines indicate selected fence and field lines
visible on aerial photographs. This information is unchecked
Entire map lies within the Connecticut Western Reserve

APPROXIMATE MEAN
DECLINATION, 1959

THIS MAP COMPLIES WITH NATIONAL MAP ACCURACY STANDARDS
FOR SALE BY U. S. GEOLOGICAL SURVEY, WASHINGTON 25, D. C.
A FOLDER DESCRIBING TOPOGRAPHIC MAPS AND SYMBOLS IS AVAILABLE ON REQUEST

USGS
Historical File
Topographic Division



ROAD CLASSIFICATION
Medium-duty ——— Light-duty ———
Unimproved dirt ———
State Route ———

DORSET, OHIO
NW 1/4 AND OVER 15' QUADRANGLE
N4137.5-W8037.5/7.5

1959

USGS
FILE COPY
TOPOGRAPHIC DIVISION

JAN - 9 1961

1810