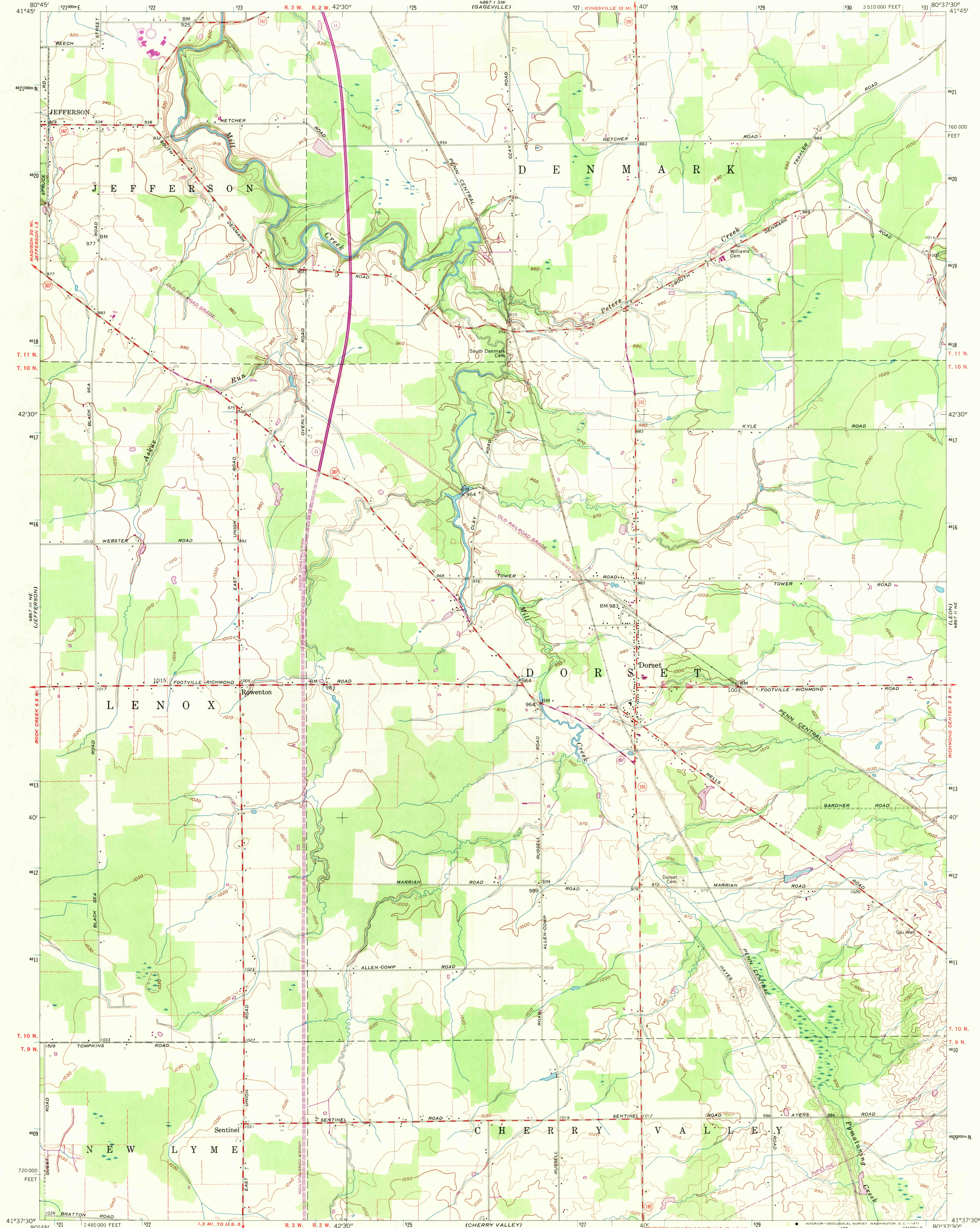


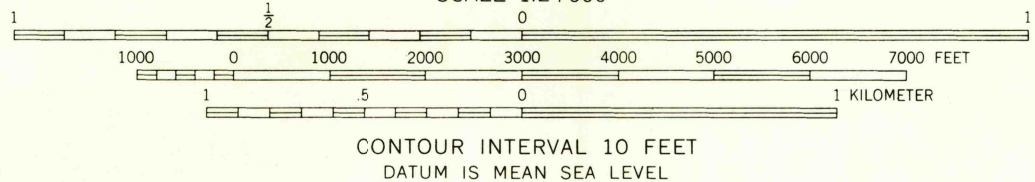
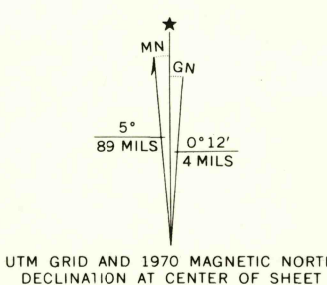
UNITED STATES
DEPARTMENT OF THE INTERIOR
GEOLOGICAL SURVEY

STATE OF OHIO
DEPARTMENT OF HIGHWAYS
DEPARTMENT OF NATURAL RESOURCES
DIVISION OF GEOLOGICAL SURVEY

DORSET QUADRANGLE
OHIO-ASHTABULA CO.
7.5 MINUTE SERIES (TOPOGRAPHIC)
NW 1/4 ANDOVER 15' QUADRANGLE



Mapped, edited, and published by the Geological Survey
Control by USGS and USC&GS
Culture and drainage in part compiled from aerial photographs taken 1952. Topography by planetable surveys 1959
Polyconic projection. 1927 North American datum
10,000-foot grid based on Ohio coordinate system, north zone
1000-meter Universal Transverse Mercator grid ticks, zone 17, shown in blue
Fine red dashed lines indicate selected fence and field lines visible on aerial photographs. This information is unchecked
Entire map lies within the Connecticut Western Reserve



USGS
Historical File
Topographic Division



ROAD CLASSIFICATION
Medium-duty ——— Light-duty ———
Unimproved dirt ———
State Route

DORSET, OHIO
NW 1/4 ANDOVER 15' QUADRANGLE
N4137.5-W8037.5/7.5

THIS MAP COMPLIES WITH NATIONAL MAP ACCURACY STANDARDS
FOR SALE BY U.S. GEOLOGICAL SURVEY, WASHINGTON, D. C. 20242
A FOLDER DESCRIBING TOPOGRAPHIC MAPS AND SYMBOLS IS AVAILABLE ON REQUEST

Revisions shown in purple compiled in cooperation with
State of Ohio agencies from aerial photographs taken 1952
This information not field checked

U.S.G.S.
1959
PHOTOREVISED 1970
AMS 4867 II NW-SERIES V852

FILE COPY

FEB 10 1971