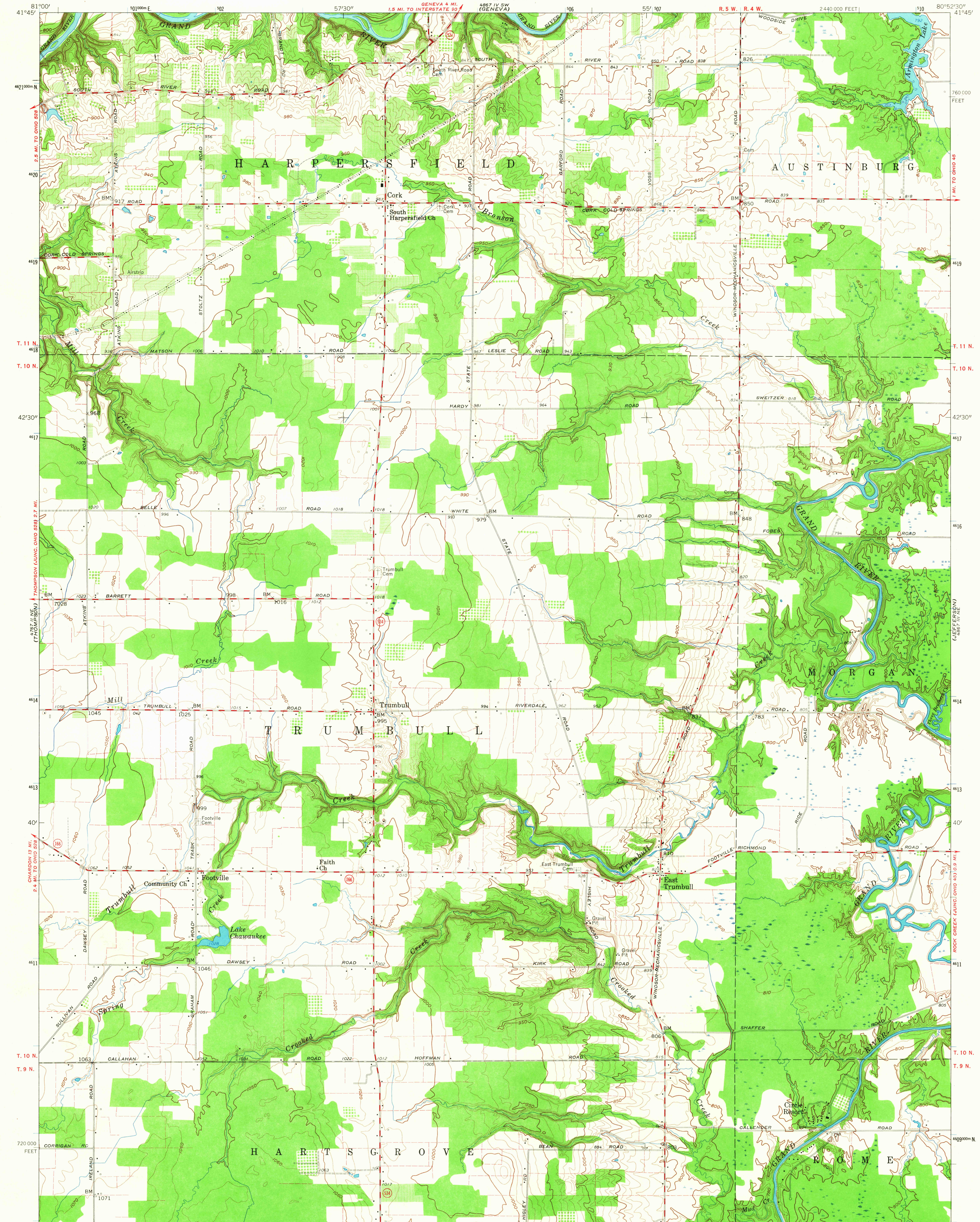
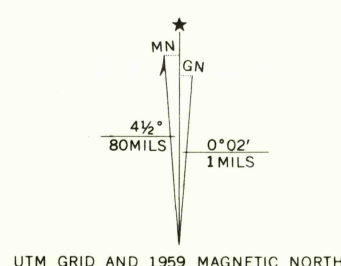


4867 11 SE
(ASHTABULA SOUTH)



Mapped, edited, and published by the Geological Survey
Control by USGS and USC&GS
Topography from aerial photographs by photogrammetric methods
Aerial photographs taken 1952. Field check 1959
Polyconic projection. 1927 North American datum
10,000-foot grid based on Ohio coordinate system, north zone
1000-meter Universal Transverse Mercator grid ticks,
zone 17, shown in blue
Fine red dashed lines indicate selected fence and field lines where
generally visible on aerial photographs. This information is unchecked
Entire area lies within the Connecticut Western Reserve
Land lines established by private subdivision of the
Connecticut Western Reserve



THIS MAP COMPLIES WITH NATIONAL MAP ACCURACY STANDARDS
FOR SALE BY U.S. GEOLOGICAL SURVEY, WASHINGTON, D.C. 20242
A FOLDER DESCRIBING TOPOGRAPHIC MAPS AND SYMBOLS IS AVAILABLE ON REQUEST

USGS
Historical File
Topographic Division



ROAD CLASSIFICATION
Medium-duty Road Light-duty
Unimproved dirt
State Route

U.S.G.S.
FILE 6007
TOPOGRAPHIC DIVISION
EAST TRUMBULL, OHIO
NW 1/4 JEFFERSON 15' QUADRANGLE
N4137.5-W8052.5/7.5
1959
AMS 4867 III NW-SERIES V852

3250
OCT 5 1966