

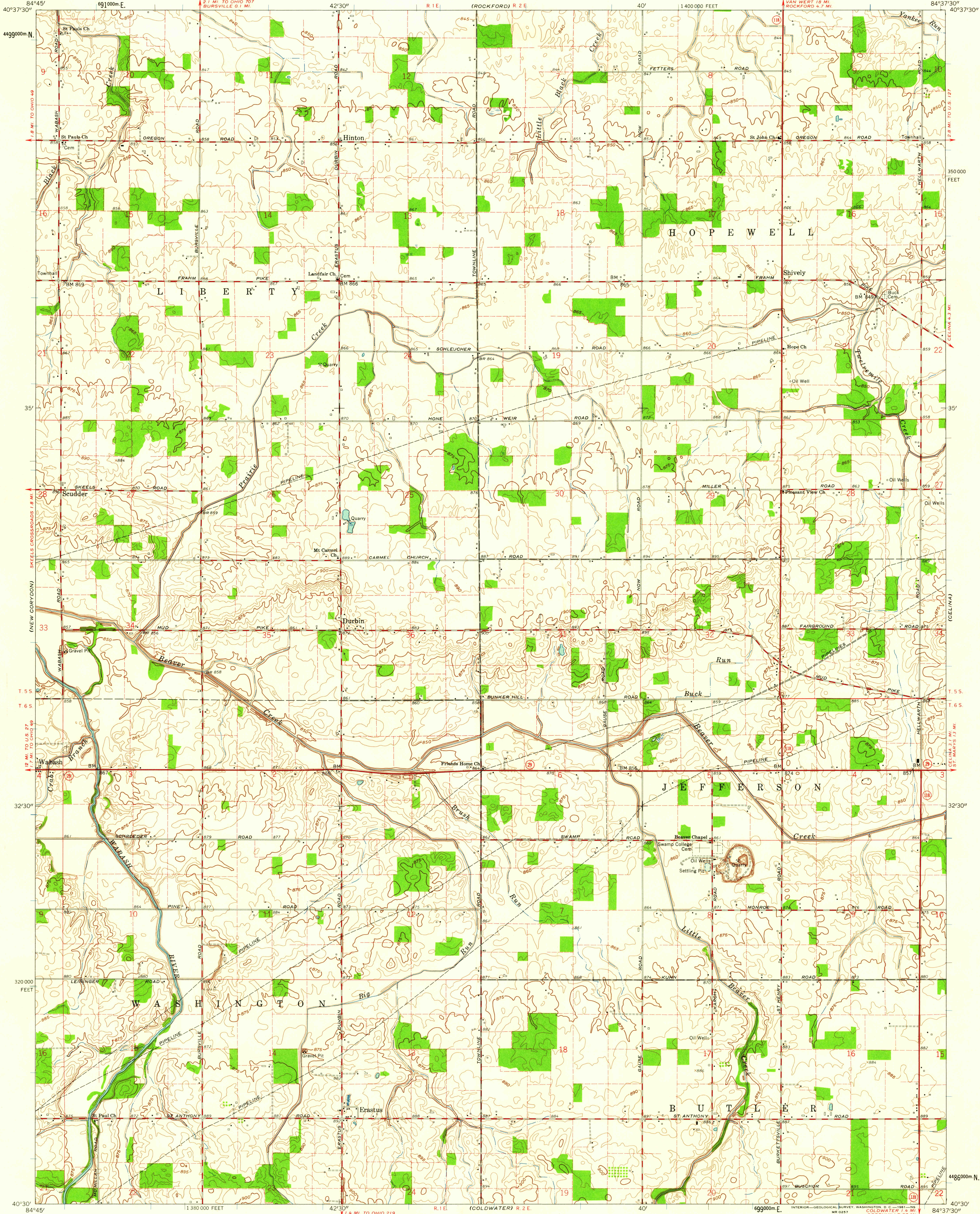
(WILSHIRE)

UNITED STATES
DEPARTMENT OF THE INTERIOR
GEOLOGICAL SURVEY

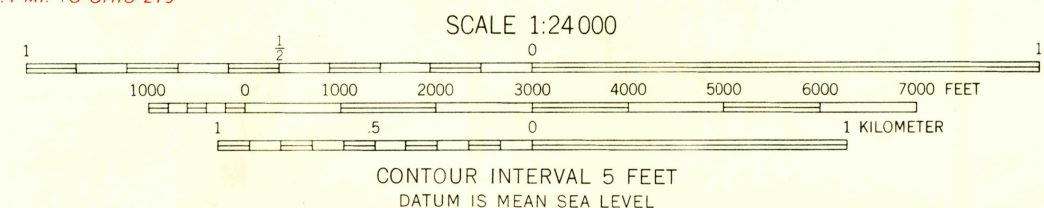
STATE OF OHIO
DEPARTMENT OF HIGHWAYS
DEPARTMENT OF NATURAL RESOURCES
DIVISION OF GEOLOGICAL SURVEY

ERASTUS QUADRANGLE
OHIO—MERCER CO.
7.5 MINUTE SERIES (TOPOGRAPHIC)
SW 1/4 CELINA 15' QUADRANGLE

(MENDON)



Mapped, edited, and published by the Geological Survey
Control by USGS and USC&GS
Topography from aerial photographs by photogrammetric methods
Aerial photographs taken 1959. Field check 1960
Polyconic projection. 1927 North American datum
10,000-foot grid based on Ohio coordinate system, north zone
1000-meter Universal Transverse Mercator grid ticks,
zone 16, shown in blue
Entire area lies within Congress Lands
Land lines based on the First Principal Meridian
Fine red dashed lines indicate selected fence and field lines where
generally visible on aerial photographs. This information is unchecked



USGS
Historical File
Topographic Division

ROAD CLASSIFICATION
Heavy-duty ——— Light-duty ———
Medium-duty ——— Unimproved dirt ———
○ State Route

U.S.G.S.
FILE COPY
TOPOGRAPHIC DIVISION
ERASTUS, OHIO
SW 1/4 CELINA 15' QUADRANGLE
N 4030—W 8437.5/7.5
1960

OCT 26 1961