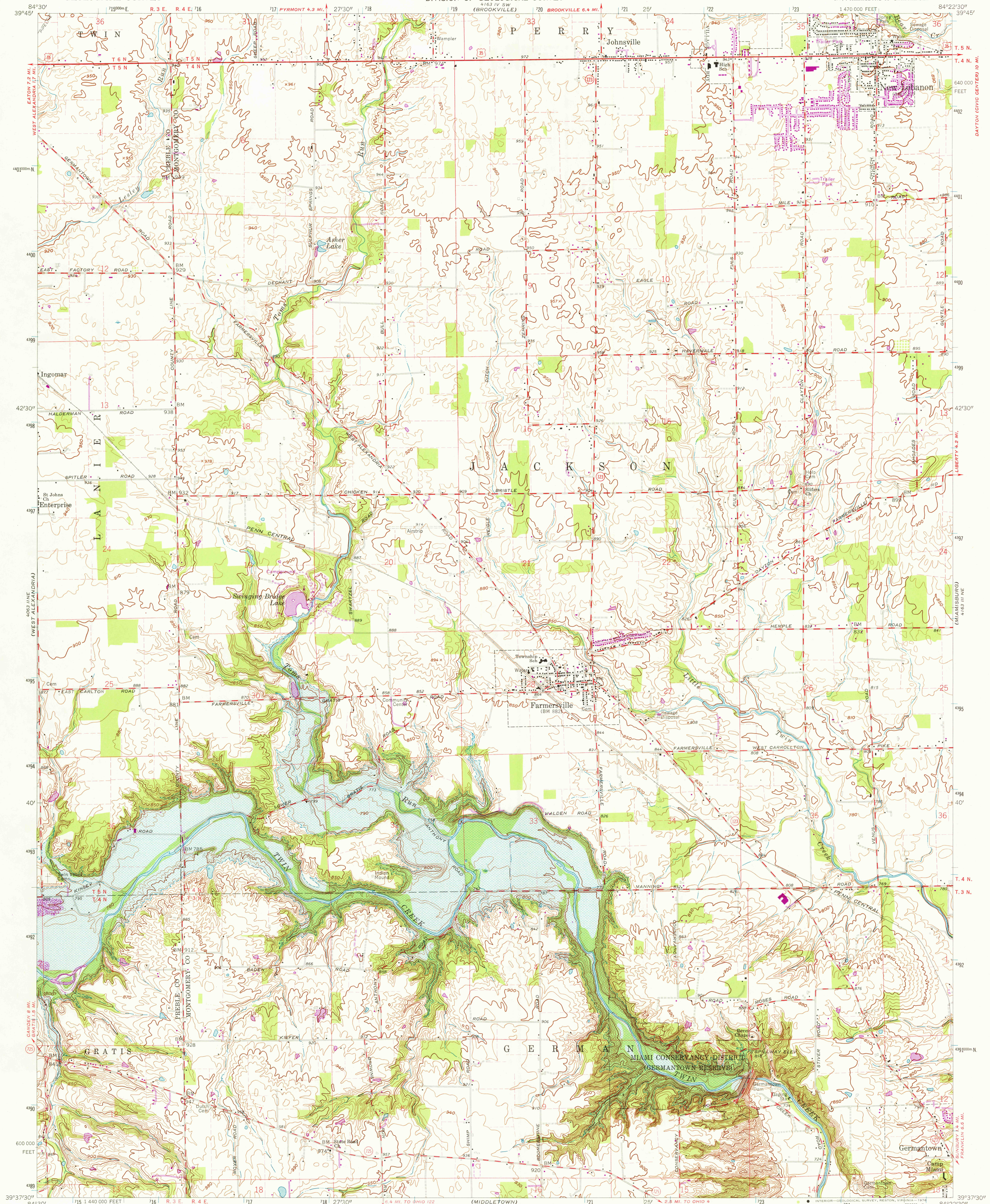


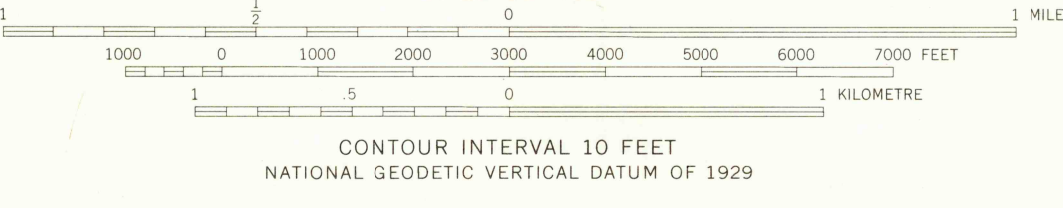
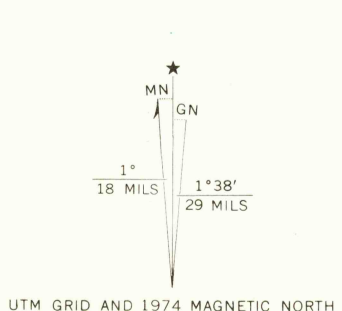
UNITED STATES
DEPARTMENT OF THE INTERIOR
GEOLOGICAL SURVEY

STATE OF OHIO
DEPARTMENT OF TRANSPORTATION
DEPARTMENT OF NATURAL RESOURCES
DIVISION OF GEOLOGICAL SURVEY

FARMERSVILLE QUADRANGLE
OHIO
7.5 MINUTE SERIES (TOPOGRAPHIC)
NW/4 MIAMISBURG 15' QUADRANGLE



Mapped, edited, and published by the Geological Survey
Control by USGS and USC&GS
Topography by photogrammetric methods from aerial
photographs taken 1959. Field checked 1960
Polyconic projection. 1927 North American datum
10,000-foot grid based on Ohio coordinate system, south zone
1000-metre Universal Transverse Mercator grid ticks,
zone 16, shown in blue
Fine red dashed lines indicate selected fence and field lines where
generally visible on aerial photographs. This information is unchecked
Area covered by dashed light-blue pattern
is subject to controlled inundation to 815 feet
Entire area lies within the Miami River Survey
Land lines based on the Great Miami River Base



THIS MAP COMPLIES WITH NATIONAL MAP ACCURACY STANDARDS
FOR SALE BY U.S. GEOLOGICAL SURVEY, RESTON, VIRGINIA 22092
A FOLDER DESCRIBING TOPOGRAPHIC MAPS AND SYMBOLS IS AVAILABLE ON REQUEST

Revisions shown in purple compiled in cooperation with
State of Ohio agencies from aerial photographs taken
1974. This information not field checked.

USGS
Historical File
Topographic Division

FARMERSVILLE, OHIO
NW/4 MIAMISBURG 15' QUADRANGLE
N 3937.5 - W 8422.5/7.5
1960
PHOTOREVISED 1974
AMS 4163 III NW-SERIES V852

MAR 1 1 1976