

(ARLINGTON)

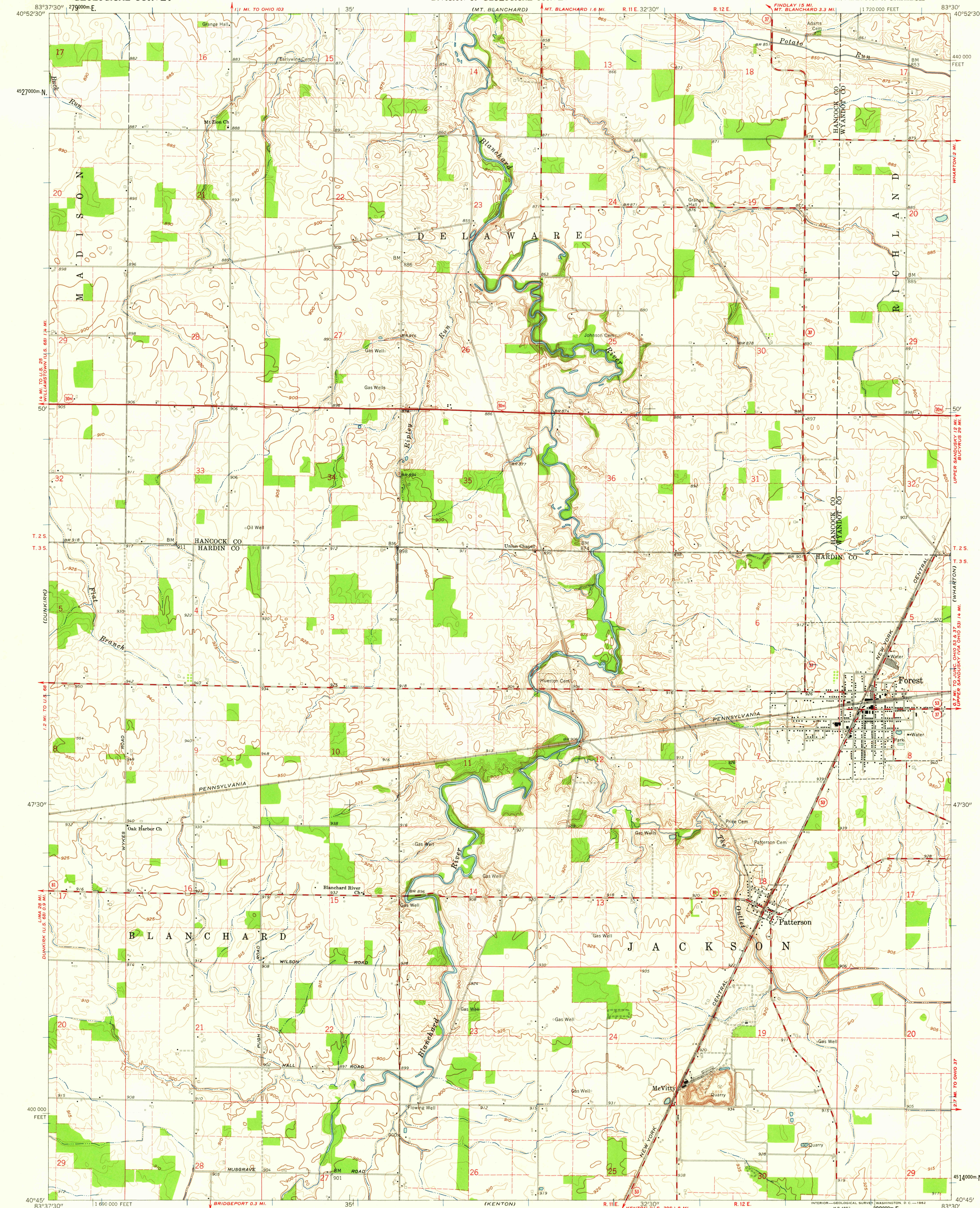
UNITED STATES  
DEPARTMENT OF THE INTERIOR  
GEOLOGICAL SURVEY

STATE OF OHIO  
DEPARTMENT OF HIGHWAYS  
DEPARTMENT OF NATURAL RESOURCES  
DIVISION OF GEOLOGICAL SURVEY

FOREST QUADRANGLE  
OHIO

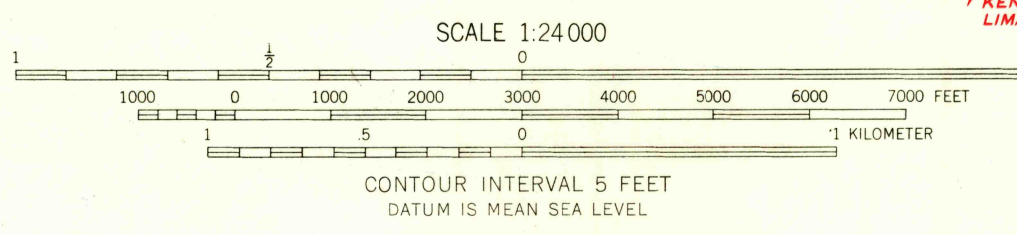
7.5 MINUTE SERIES (TOPOGRAPHIC)  
SE 1/4 ARLINGTON 15' QUADRANGLE

(CAREY)



Maped, edited, and published by the Geological Survey  
Control by USGS and USC&GS  
Topography by photogrammetric methods from aerial  
photographs taken 1959. Field checked 1961  
Polyconic projection. 1927 North American datum  
10,000-foot grid based on Ohio coordinate system, north zone  
1000-meter Universal Transverse Mercator grid ticks,  
zone 17, shown in blue  
Entire area lies within Congress Lands  
Land lines based on the First Principal Meridian  
Fine red dashed lines indicate selected fence and field lines where  
generally visible on aerial photographs. This information is unchecked

TRUE NORTH  
MAGNETIC NORTH  
APPROXIMATE MEAN  
DECLINATION, 1961



USGS  
Historical File  
Topographic Division

ROAD CLASSIFICATION  
Heavy-duty ——— Light-duty ———  
Medium-duty ——— Unimproved dirt ———  
U. S. Route ——— State Route ———



FOREST, OHIO  
SE 1/4 ARLINGTON 15' QUADRANGLE  
N 4045—W 8330/7.5

1961

THIS MAP COMPLIES WITH NATIONAL MAP ACCURACY STANDARDS  
FOR SALE BY U. S. GEOLOGICAL SURVEY, WASHINGTON 25, D. C.  
A FOLDER DESCRIBING TOPOGRAPHIC MAPS AND SYMBOLS IS AVAILABLE ON REQUEST

NOV - 6 1962

2 F 00