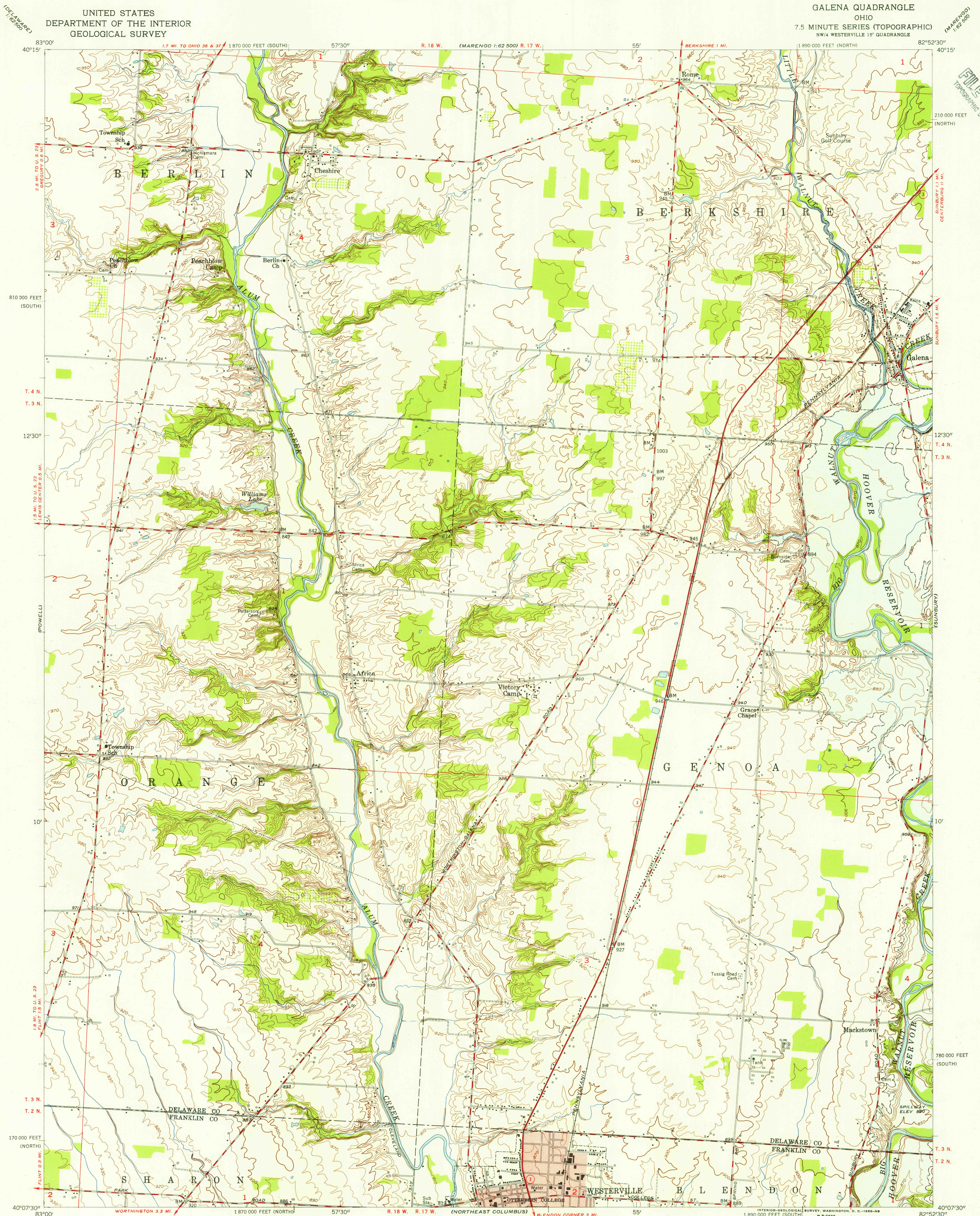


UNITED STATES
DEPARTMENT OF THE INTERIOR
GEOLOGICAL SURVEY

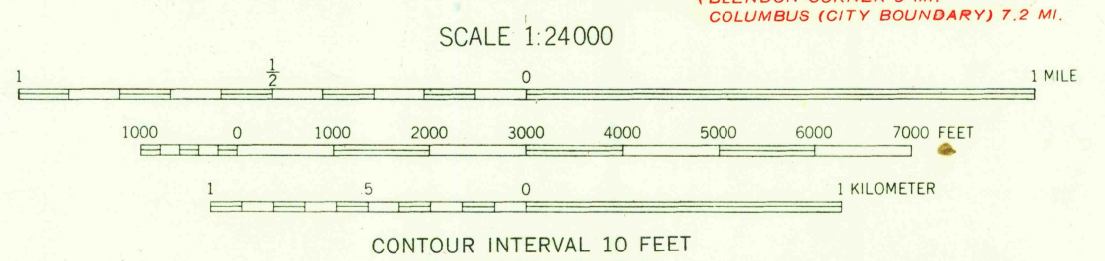
GALENA QUADRANGLE
OHIO
7.5 MINUTE SERIES (TOPOGRAPHIC)
NW 1/4 WESTERVILLE 15' QUADRANGLE

U.S.G.S.
FILE COPY
TOPOGRAPHIC DIVISION



Mapped, edited, and published by the Geological Survey
Control by USGS and USC&GS
Topography from aerial photographs by Kelsh plotters
Aerial photographs taken 1953 and 1954. Field check 1955
Polyconic projection. 1927 North American datum
10,000-foot grids based on Ohio coordinate system,
north and south zones
Areas covered by dashed light-blue pattern
are subject to controlled inundation
Red tint indicates area in which only
landmark buildings are shown
Entire map falls within U. S. Military District

APPROXIMATE MEAN
DECLINATION, 1955



USGS
Historical File
Topographic Division



ROAD CLASSIFICATION
Heavy-duty ——— Light-duty ———
Medium-duty ——— Unimproved dirt ———
U. S. Route ——— State Route ———

U.S.G.S.
FILE COPY
TOPOGRAPHIC DIVISION

GALENA, OHIO
NW 1/4 WESTERVILLE 15' QUADRANGLE
N 4007.5 - W 8252.5/7.5
1955

THIS MAP COMPLIES WITH NATIONAL MAP ACCURACY STANDARDS
FOR SALE BY U. S. GEOLOGICAL SURVEY, WASHINGTON 25, D. C.
A FOLDER DESCRIBING TOPOGRAPHIC MAPS AND SYMBOLS IS AVAILABLE ON REQUEST

JUL 3 1956
3175