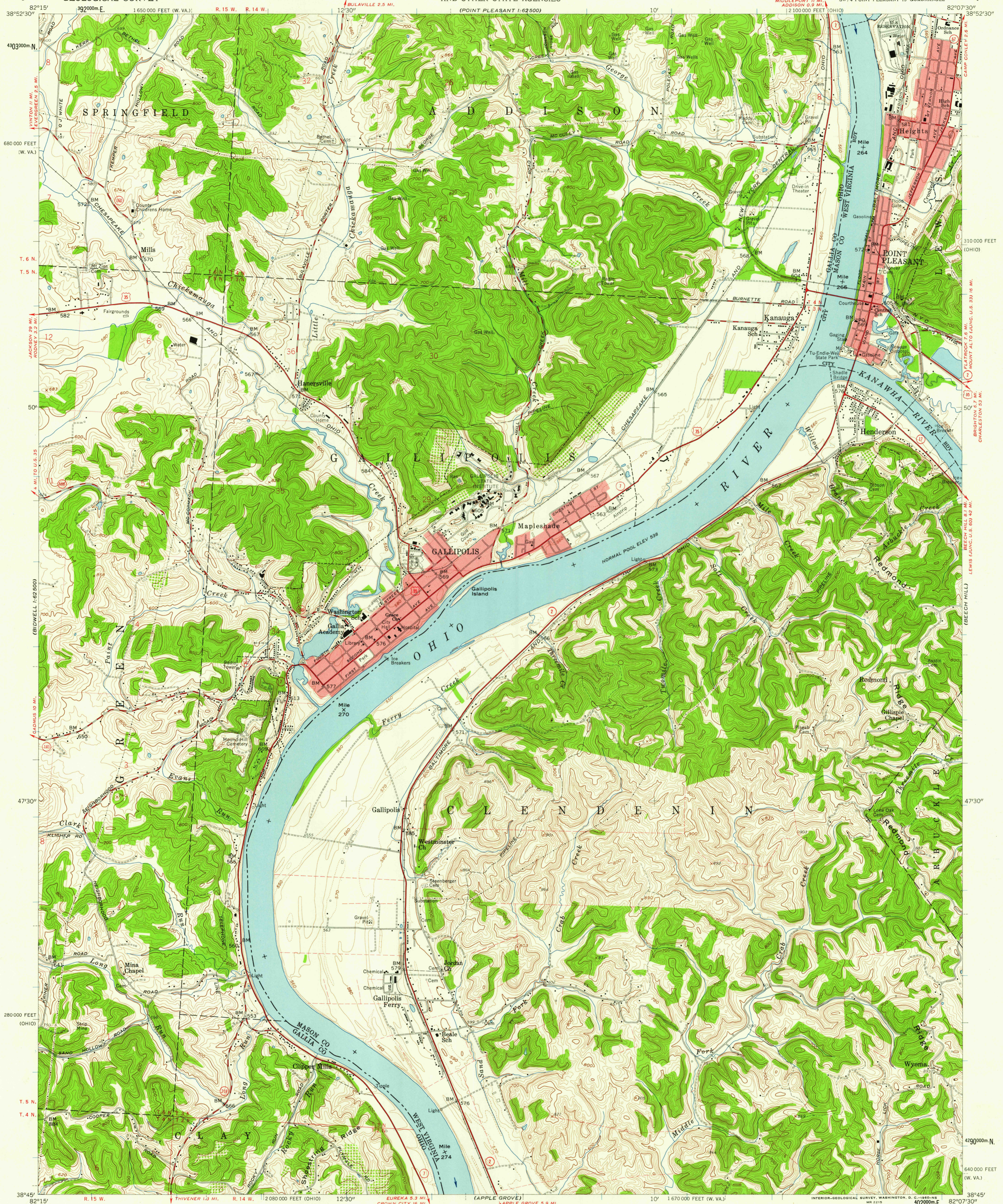


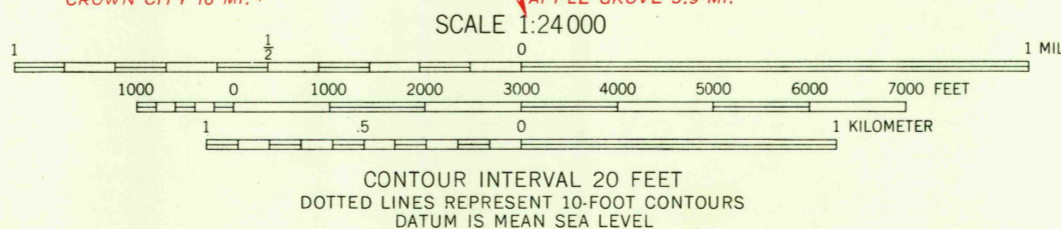
UNITED STATES
DEPARTMENT OF THE INTERIOR
GEOLOGICAL SURVEY

STATE OF WEST VIRGINIA
REPRESENTED BY THE
STATE OF WEST VIRGINIA GEOLOGICAL SURVEY
AND OTHER STATE AGENCIES

GALLIPOLIS QUADRANGLE
OHIO—WEST VIRGINIA
7.5 MINUTE SERIES (TOPOGRAPHIC)
SW 1/4 POINT PLEASANT 15' QUADRANGLE



Mapped, edited, and published by the Geological Survey
Control by USGS, USC&GS, and USCE
Topography from aerial photographs by photogrammetric methods
Aerial photographs taken 1956 and 1957. Field check 1958
Polyconic projection. 1927 North American datum
10,000-foot grids based on Ohio and West Virginia coordinate
systems, south zones. 1000-meter Universal Transverse Mercator
grid ticks, zone 17, shown in blue
Red tint indicates areas in which only landmark buildings are shown
The state boundary as shown represents the approximate position
of the low waterline as determined from U. S. Corps of Engineers
Ohio River charts, surveyed 1913, and supplementary information
Dotted land lines established by private subdivision of
Ohio Company Purchase
Fine red dashed lines indicate selected fence and field lines
visible on aerial photographs. This information is unchecked
Unchecked elevations are shown in brown



USGS
Historical File
Topographic Division



ROAD CLASSIFICATION
Heavy-duty ——— Light-duty ———
Medium-duty ——— Unimproved dirt ———
U. S. Route ——— State Route ———

GALLIPOLIS, OHIO—W. VA.
SW 1/4 POINT PLEASANT 15' QUADRANGLE
N 3845—W 8207.5/7.5

1958

U.S.G.S.
FILE COPY
TOPOGRAPHIC DIVISION

APR 27 1966

2495