

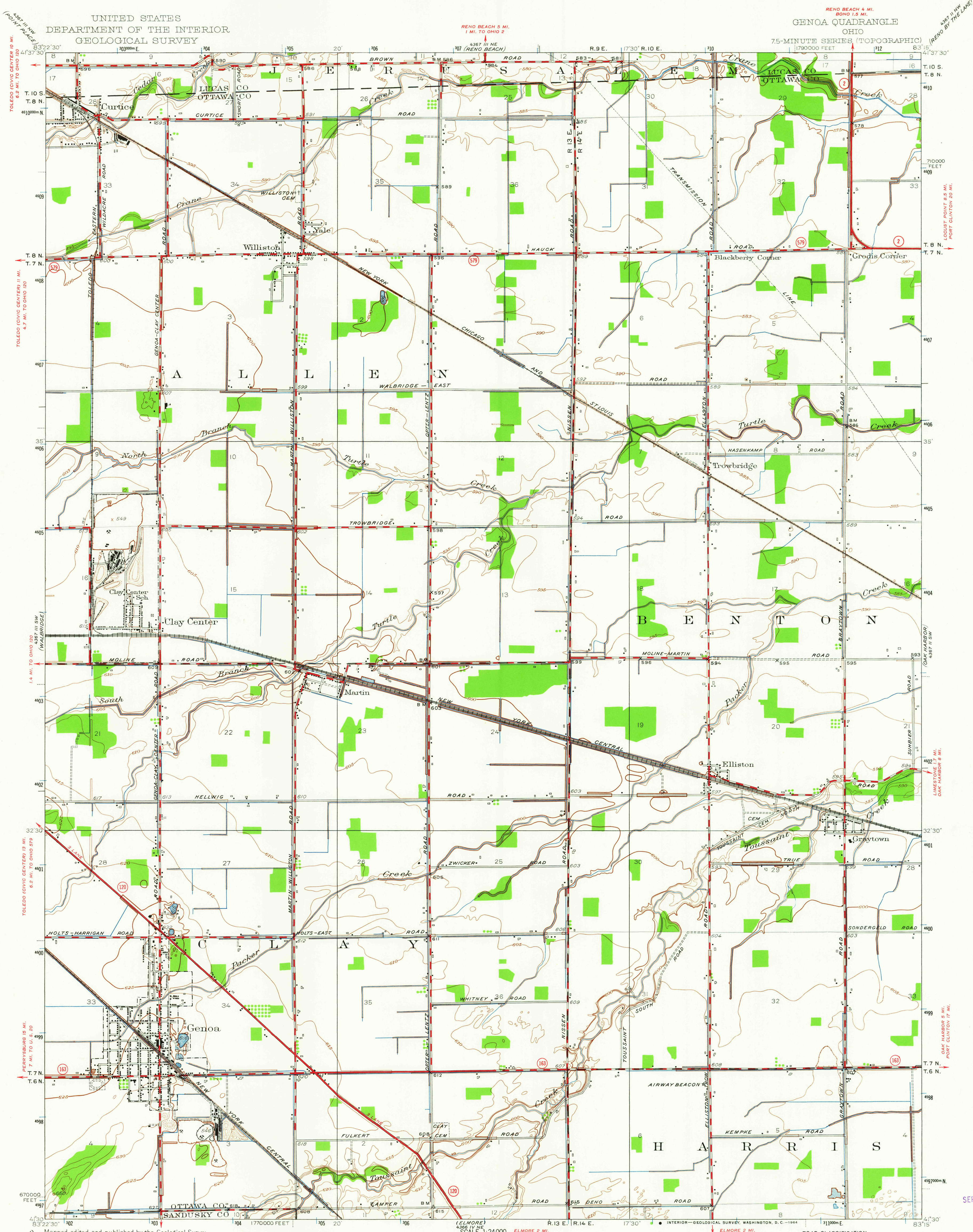
UNITED STATES
DEPARTMENT OF THE INTERIOR
GEOLOGICAL SURVEY

GENOA QUADRANGLE

OHIO

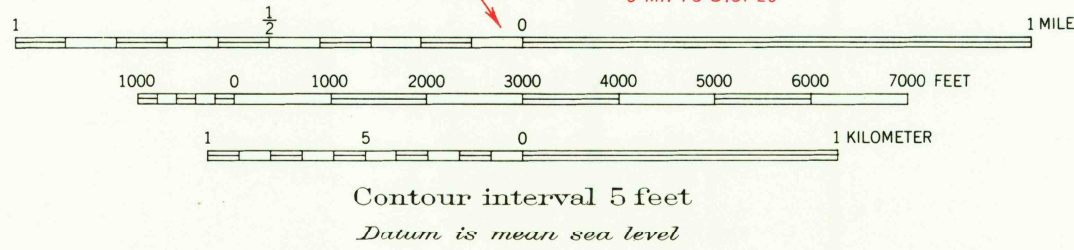
7.5-MINUTE SERIES (TOPOGRAPHIC)

1:750,000 FEET



Maped, edited, and published by the Geological Survey
Surveyed in 1935, Revised in 1952
Polyconic projection. 1927 North American datum
10000-foot grid based on Ohio coordinate system,
north zone.
1000-meter Universal Transverse Mercator grid ticks,
zone 17, shown in blue

UTM GRID AND 1952 MAGNETIC NORTH
DECLINATION AT CENTER OF SHEET



THIS MAP COMPLIES WITH NATIONAL MAP ACCURACY STANDARDS
FOR SALE BY U.S. GEOLOGICAL SURVEY, WASHINGTON 25, D. C.
A FOLDER DESCRIBING TOPOGRAPHIC MAPS AND SYMBOLS IS AVAILABLE ON REQUEST

USGS
Historical File
Topographic Division



ROAD CLASSIFICATION
Heavy-duty ——— 1 LANE 6 LANE Light-duty ———
Medium-duty ——— 1 LANE 6 LANE Unimproved dirt ———
U. S. Route ——— State Route ———

GENOA, OHIO
N4130-W8315/7.5

1952

AMS 4367 III SE-SERIES V852

SEP 24 1964

2255

U.S.G.S.
FILE COPY
TOPOGRAPHIC DIVISION