

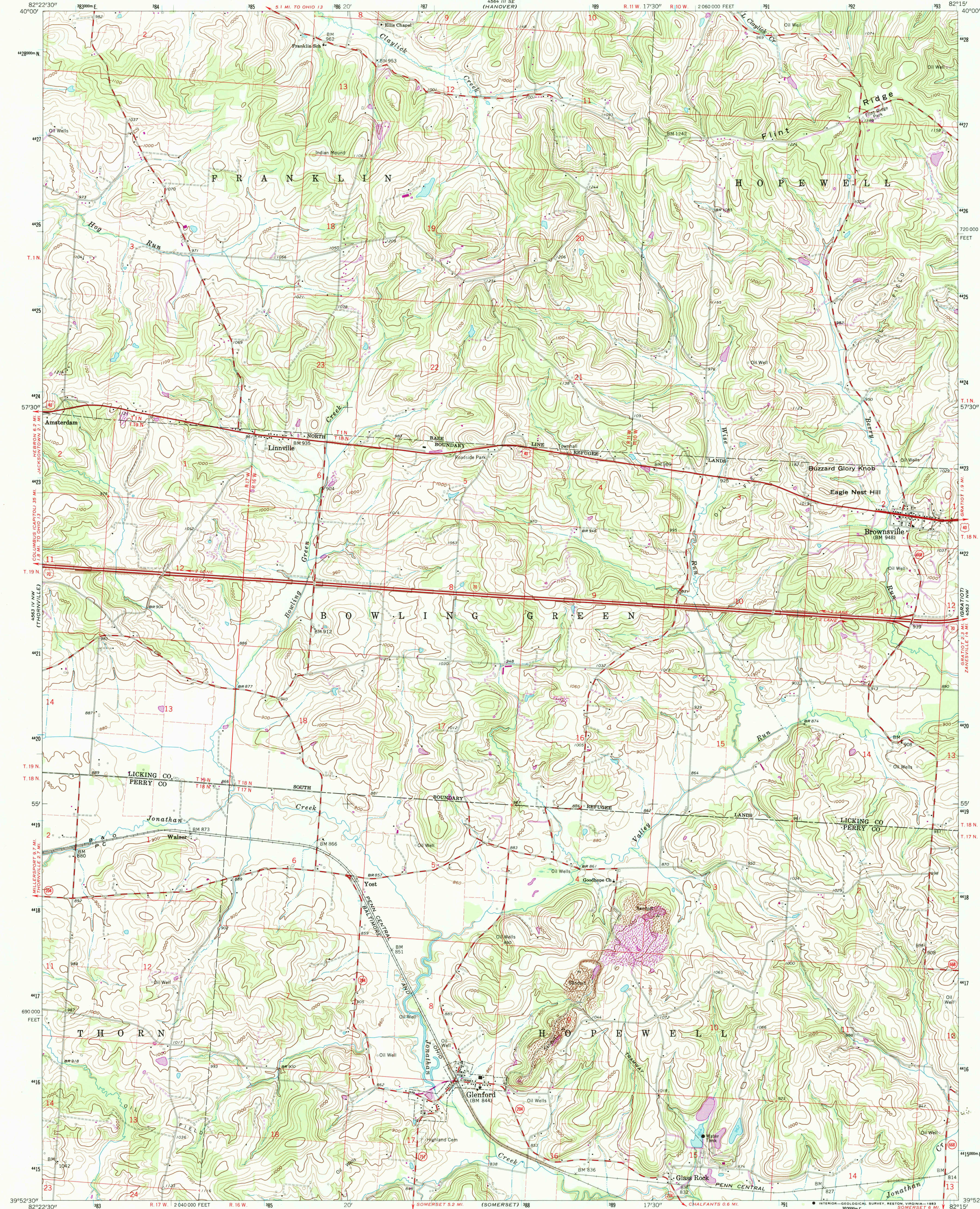
Scale 1:24,000
(NEWARK)

UNITED STATES
DEPARTMENT OF THE INTERIOR
GEOLOGICAL SURVEY

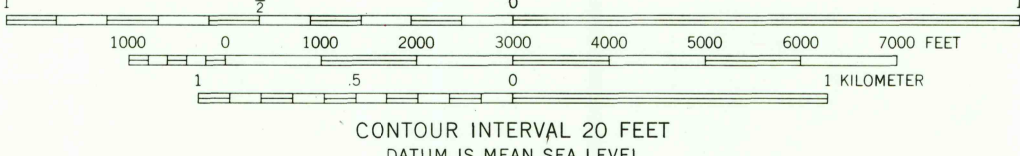
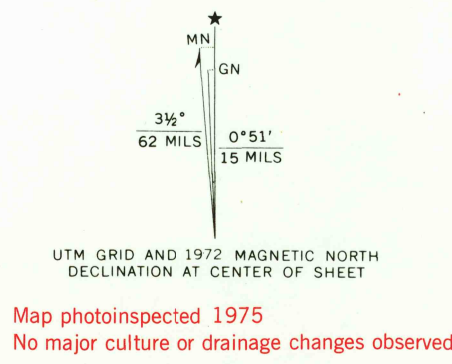
STATE OF OHIO
DEPARTMENT OF HIGHWAYS
DEPARTMENT OF NATURAL RESOURCES
DIVISION OF GEOLOGICAL SURVEY

GLENFORD QUADRANGLE
OHIO
7.5 MINUTE SERIES (TOPOGRAPHIC)

Scale 1:24,000
(NEWARK)



Maped, edited, and published by the Geological Survey
Control by USGS and USC&GS
Topography by photogrammetric methods from aerial
photographs taken 1960. Field checked 1961
Polyconic projection. 1927 North American datum
10,000-foot grid based on Ohio coordinate system, south zone
1000-meter Universal Transverse Mercator grid ticks,
zone 17, shown in blue
Area north of Base Line lies within the United States Military District
Land lines based on the Base Line of the United States Military District
Area south of Base Line lies within Congress Lands
east of the Scioto River
Land lines based on the Ohio River Base
Fine red dashed lines indicate selected fence and field lines where
generally visible on aerial photographs. This information is unchecked



ROAD CLASSIFICATION
Heavy-duty ——— Light-duty ———
Medium-duty ——— Unimproved dirt ———
Interstate Route U.S. Route State Route
OHIO
QUADRANGLE LOCATION
GLENFORD, OHIO
N3952.5-W8215.7.5
PHOTOINSPECTED 1975
1961
PHOTOREVISED 1972
AMS 4563 IV NE-SERIES V852

THIS MAP COMPLIES WITH NATIONAL MAP ACCURACY STANDARDS
FOR SALE BY U. S. GEOLOGICAL SURVEY, RESTON, VIRGINIA 22092
A FOLDER DESCRIBING TOPOGRAPHIC MAPS AND SYMBOLS IS AVAILABLE ON REQUEST

Revisions shown in purple compiled in cooperation with
State of Ohio agencies from aerial photographs taken
1972. This information not field checked

SEP 23 1975
PULFORDHAM
1975-1976 HISTORICAL MAPS