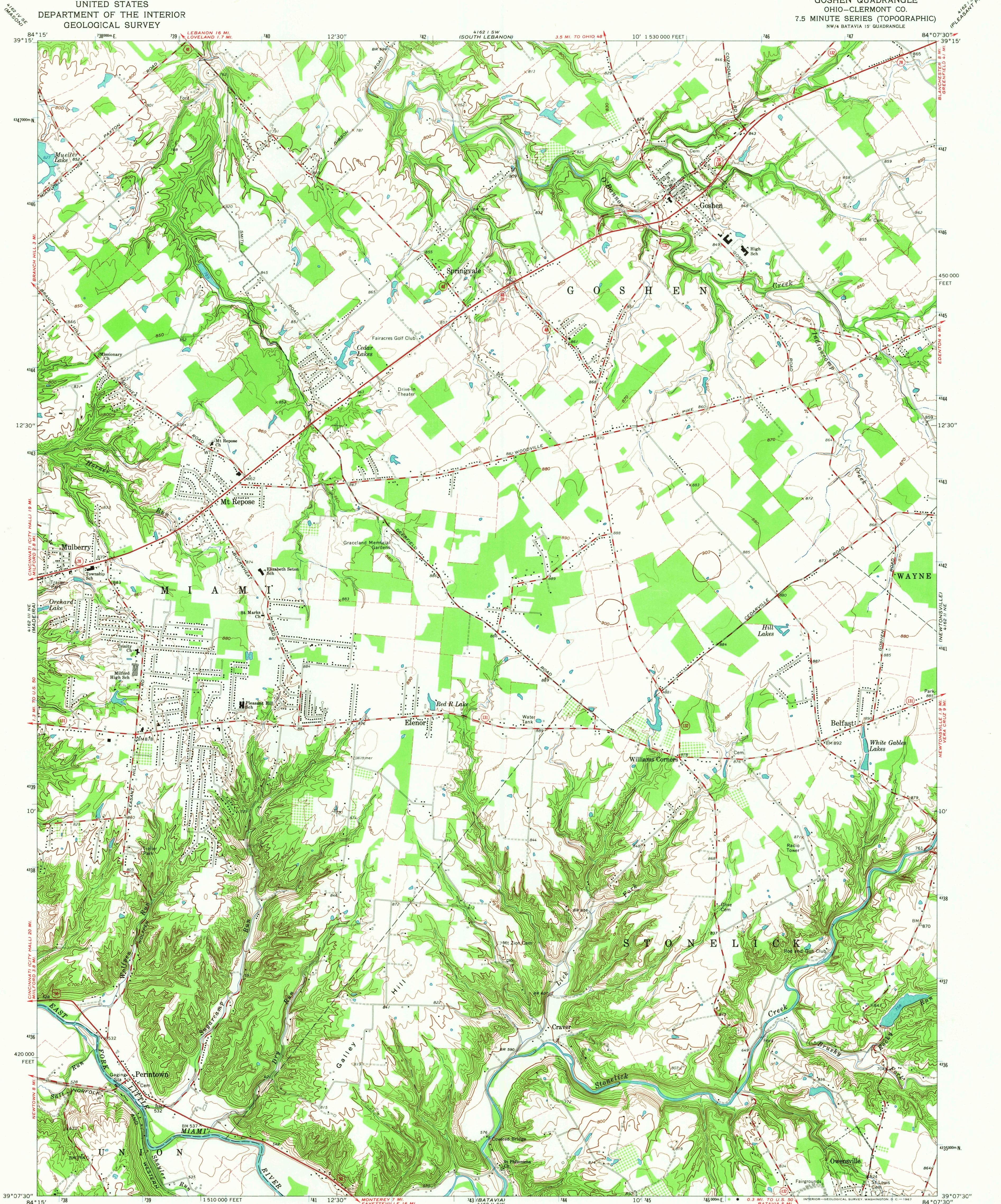
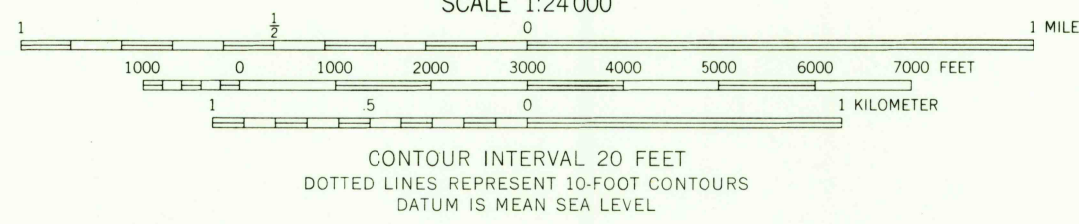
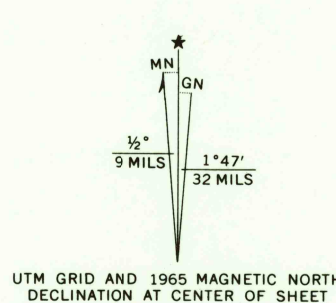


UNITED STATES  
DEPARTMENT OF THE INTERIOR  
GEOLOGICAL SURVEY

GOSHEN QUADRANGLE  
OHIO—CLERMONT CO.  
7.5 MINUTE SERIES (TOPOGRAPHIC)  
NW/4 BATAVIA 15' QUADRANGLE



Mapped, edited, and published by the Geological Survey  
Revised in cooperation with State of Ohio agencies  
Control by USGS and USC&GS  
Topography by photogrammetric methods from aerial photographs  
taken 1952. Field checked 1953. Revised 1965  
Polyconic projection. 1927 North American datum  
10,000-foot grid based on Ohio coordinate system, south zone  
1000-meter Universal Transverse Mercator grid ticks,  
zone 16, shown in blue  
Fine red dashed lines indicate selected fence and field lines where  
generally visible on aerial photographs. This information is unchecked  
Entire area lies within the Virginia Military District



USGS  
Historical File  
Topographic Division



U.S.G.S.

FILE COPY  
TOPOGRAPHIC DIVISION

ROAD CLASSIFICATION  
Heavy-duty ——— Light-duty ———  
Medium-duty ——— Unimproved dirt ———  
U.S. Route ——— State Route ———

GOSHEN, OHIO  
NW/4 BATAVIA 15' QUADRANGLE  
N3907.5—W8407.5/7.5  
1965  
AMS 4162 II NW—SERIES V852

3660  
MAR 20 1967