

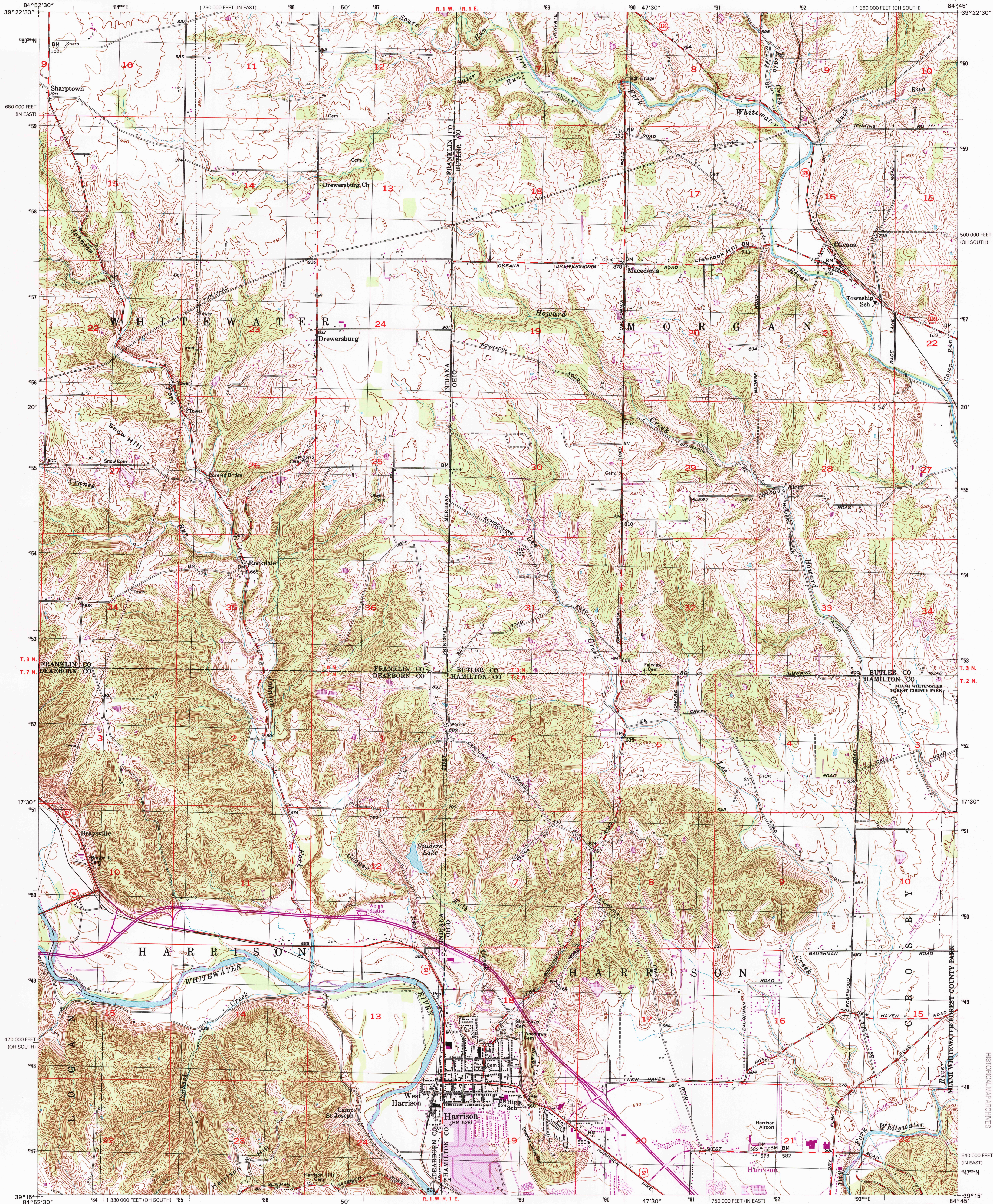


U.S. DEPARTMENT OF THE INTERIOR  
U.S. GEOLOGICAL SURVEY



UNITED STATES  
DEPARTMENT OF THE ARMY  
CORPS OF ENGINEERS

HARRISON QUADRANGLE  
OHIO-INDIANA  
7.5-MINUTE SERIES (TOPOGRAPHIC)



Produced by the United States Geological Survey

Topography compiled 1954. Planimetry derived from imagery taken 1979 and other sources. Photorevised using imagery dated 1979; no major culture or drainage changes observed. PLSS and survey control current as of 1954. Boundaries, other than corporate, revised 1999

North American Datum of 1927 (NAD 27)  
Projection: Ohio coordinate system, south zone (Lambert conformal conic)

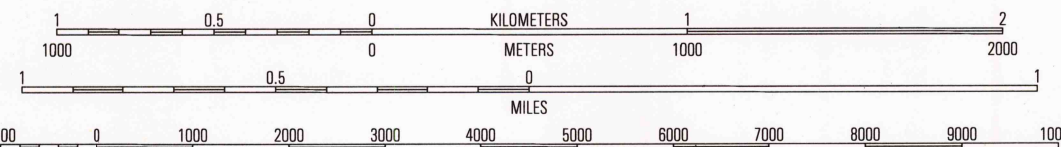
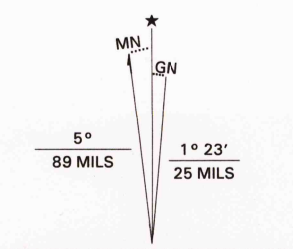
10 000-foot ticks: Ohio coordinate system, south zone and Indiana coordinate system, east zone  
1000-meter Universal Transverse Mercator grid, zone 16

North American Datum of 1983 (NAD 83) is shown by dashed corner ticks. The values of the shift between NAD 27 and NAD 83 for 7.5-minute intersections are obtainable from National Geodetic Survey NADCON software

Ohio area lies within the Miami River Survey  
Land lines in Ohio based on the Great Miami River Base

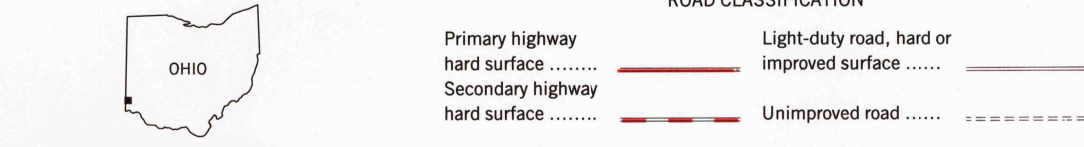
There may be private inholdings within the boundaries of the National or State reservations shown on this map

Information shown in purple may not meet USGS content standards and may conflict with previously mapped contours



CONTOUR INTERVAL 10 FEET  
NATIONAL GEODETIC VERTICAL DATUM OF 1929  
TO CONVERT FROM FEET TO METERS, MULTIPLY BY 0.3048

THIS MAP COMPLIES WITH NATIONAL MAP ACCURACY STANDARDS  
FOR SALE BY U.S. GEOLOGICAL SURVEY, P.O. BOX 25286, DENVER, COLORADO 80225  
AND INDIANA DEPARTMENT OF NATURAL RESOURCES, INDIANAPOLIS, INDIANA 46204  
A FOLDER DESCRIBING TOPOGRAPHIC MAPS AND SYMBOLS IS AVAILABLE ON REQUEST



QUADRANGLE LOCATION

1	2	3
4	5	6
7	8	

1 Whitcomb  
2 Riley  
3 Milville  
4 Cedar Grove  
5 Shandon  
6 Guilford  
7 Hoven  
8 Addyston

ADJOINING 7.5' QUADRANGLE NAMES

HARRISON, OH-IN

1996

NIMA 4062 IV SE-SERIES V851

RECEIVED  
APR 3 0 2000  
USGS WMD  
HISTORICAL MAP ARCHIVES

