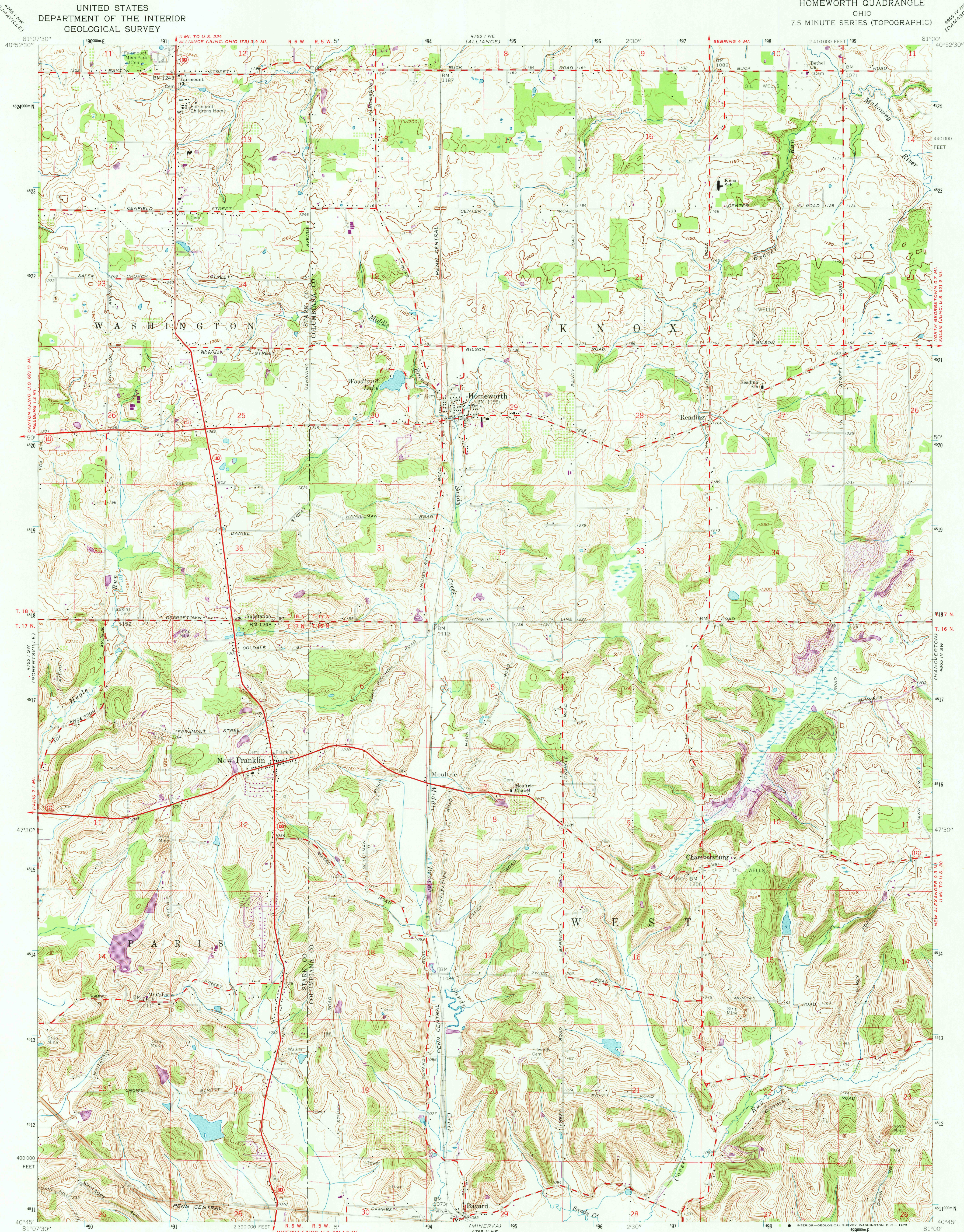


UNITED STATES  
DEPARTMENT OF THE INTERIOR  
GEOLOGICAL SURVEY

HOMEWORTH QUADRANGLE  
OHIO  
7.5 MINUTE SERIES (TOPOGRAPHIC)



Mapped, edited, and published by the Geological Survey

Control by USGS and USC&GS

Topography from aerial photographs by photogrammetric methods

Aerial photographs taken 1952. Field check 1960

Polyconic projection. 1927 North American datum

10,000-foot grid based on Ohio coordinate system, north zone

1000-meter Universal Transverse Mercator grid ticks,

zone 17, shown in blue

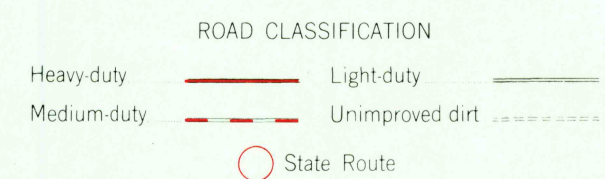
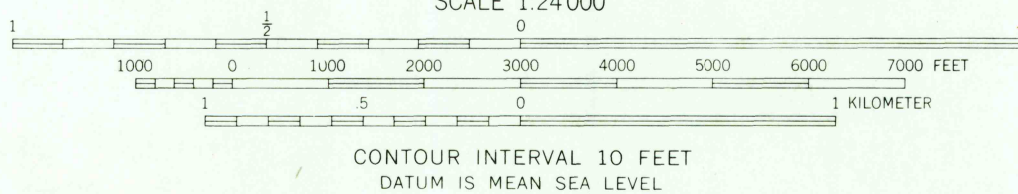
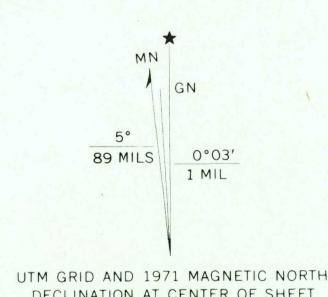
Fine red dashed lines indicate fence and field lines where

generally visible on aerial photographs. This information is unchecked

All wells shown are oil wells

Entire area lies within Congress Lands North of Old Seven Ranges

Land lines based on Ohio River Base



HOMEWORTH, OHIO  
N4045-W8100/7.5

1960  
PHOTOREVISED 1971  
AMS 4765 I SE-SERIES V852

THIS MAP COMPLIES WITH NATIONAL MAP ACCURACY STANDARDS  
FOR SALE BY U.S. GEOLOGICAL SURVEY, WASHINGTON, D. C. 20242  
A FOLDER DESCRIBING TOPOGRAPHIC MAPS AND SYMBOLS IS AVAILABLE ON REQUEST

Revisions shown in purple compiled in cooperation with  
State of Ohio agencies from aerial photographs taken  
1971. This information not field checked

USGS  
HISTORICAL FILE  
TOPOGRAPHIC DIVISION

FEB 26 1973

2785