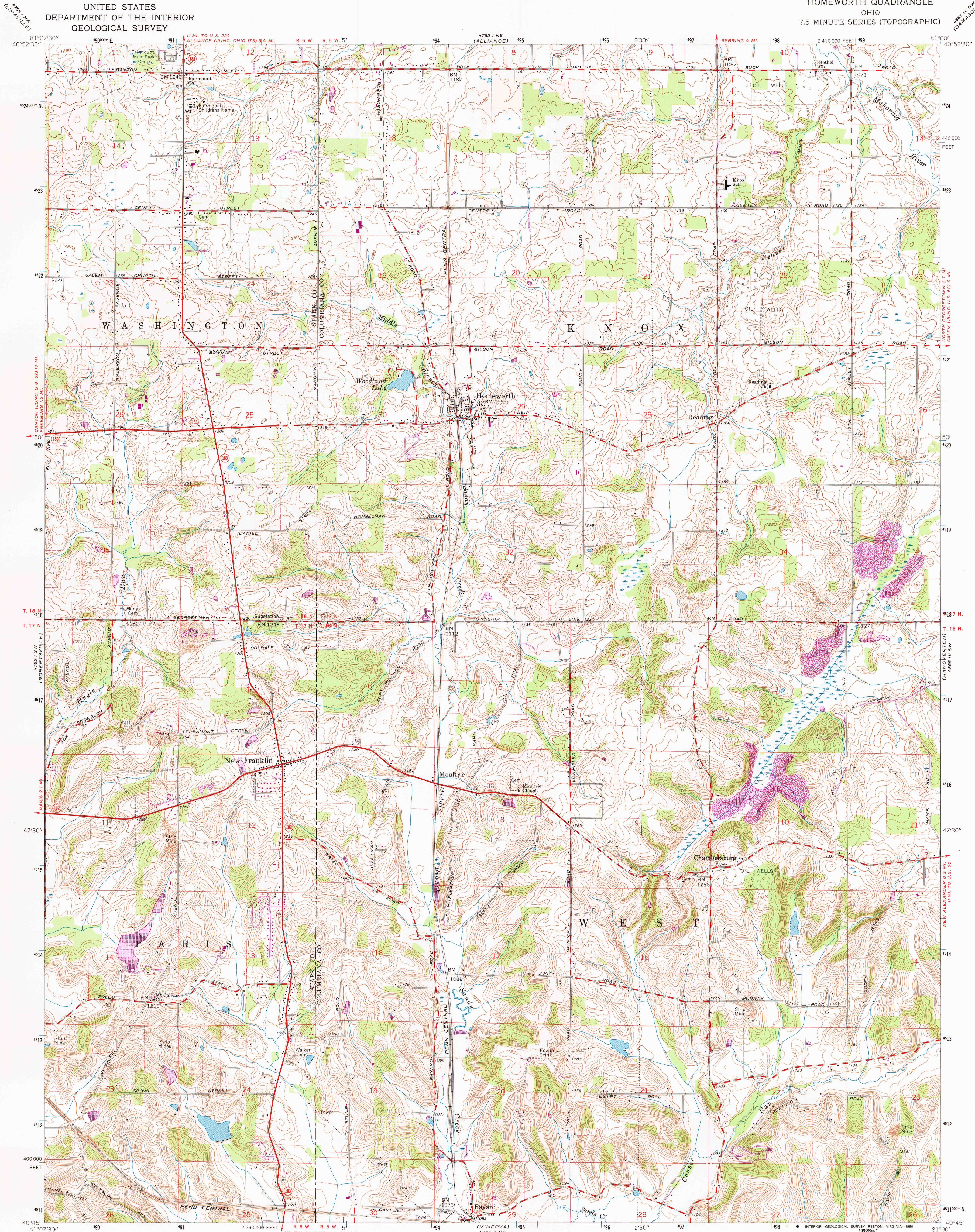
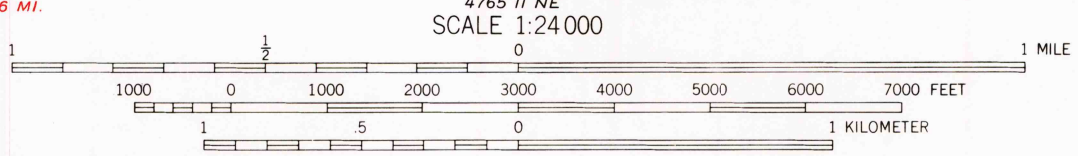
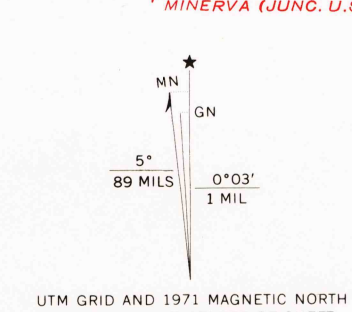


UNITED STATES  
DEPARTMENT OF THE INTERIOR  
GEOLOGICAL SURVEY

HOMEWORTH QUADRANGLE  
OHIO  
7.5 MINUTE SERIES (TOPOGRAPHIC)



Mapped, edited, and published by the Geological Survey  
Control by USGS and USC&GS  
Topography from aerial photographs by photogrammetric methods  
Aerial photographs taken 1952. Field check 1960  
Polyconic projection. 1927 North American datum  
10,000-foot grid based on Ohio coordinate system, north zone  
1000-meter Universal Transverse Mercator grid ticks,  
zone 17, shown in blue  
Fine red dashed lines indicate fence and field lines where  
generally visible on aerial photographs. This information is unchecked  
All wells shown are oil wells from State of Ohio files  
Entire area lies within Congress Lands North of Old Seven Ranges  
Land lines based on Ohio River Base  
Map photorevised 1976  
No major culture or drainage changes observed



ROAD CLASSIFICATION  
Heavy-duty ——— Light duty ———  
Medium-duty ——— Unimproved dirt ———  
State Route ———

HOMEWORTH, OHIO

N 4045—W 8100/7.5  
PHOTOINSPECTED 1976  
1960  
PHOTOREVISED 1971  
AMS 4765 I SE—SERIES V852

THIS MAP COMPLIES WITH NATIONAL MAP ACCURACY STANDARDS  
FOR SALE BY U.S. GEOLOGICAL SURVEY  
DENVER, COLORADO 80225, OR RESTON, VIRGINIA 22092  
A FOLDER DESCRIBING TOPOGRAPHIC MAPS AND SYMBOLS IS AVAILABLE ON REQUEST

Revisions shown in purple compiled in cooperation with  
State of Ohio agencies from aerial photographs taken  
1971. This information not field checked

