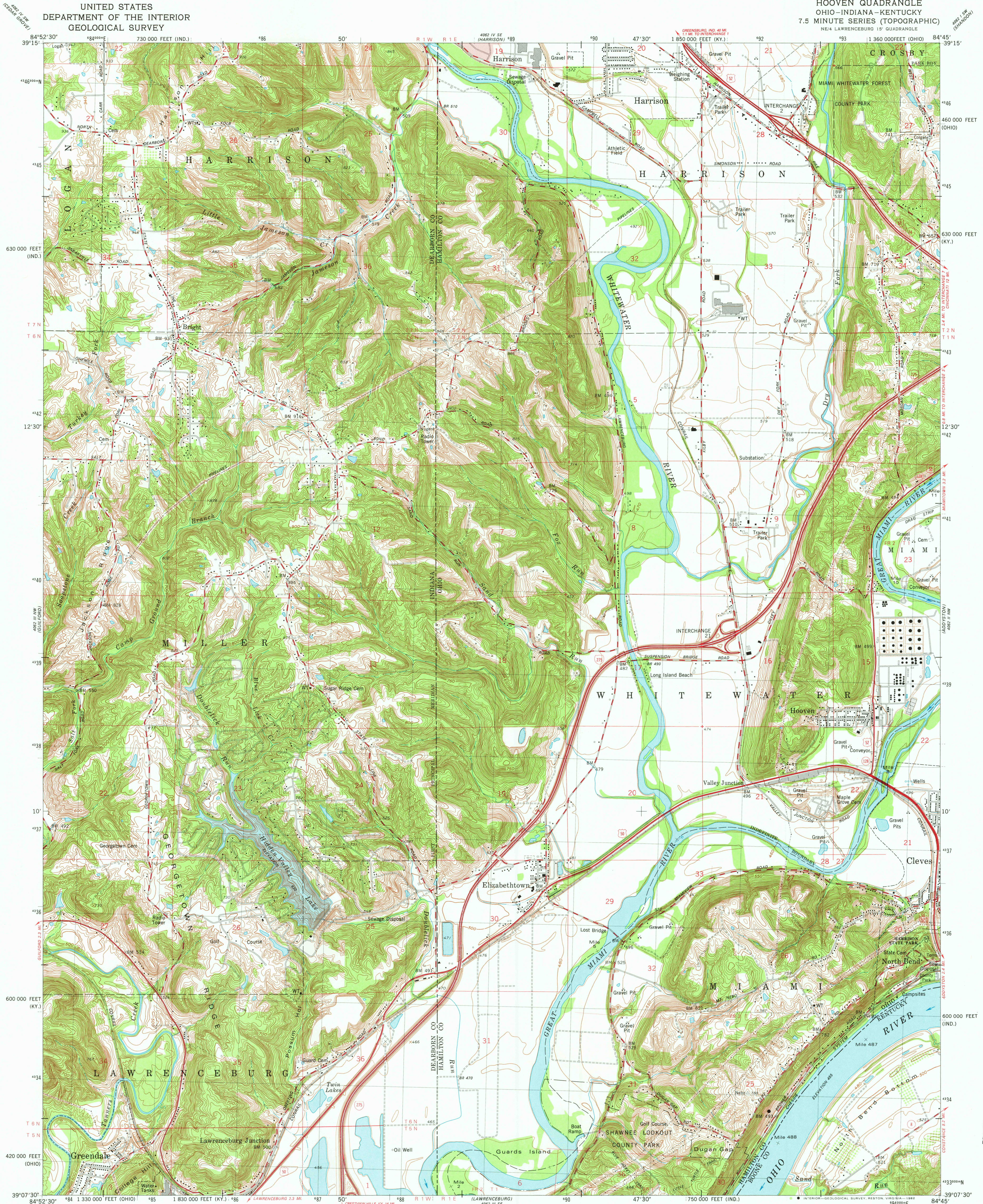


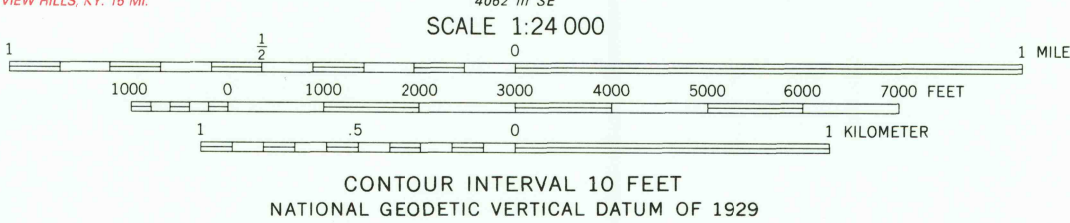
UNITED STATES
DEPARTMENT OF THE INTERIOR
GEOLOGICAL SURVEY

HOOVEN QUADRANGLE
OHIO-INDIANA-KENTUCKY
7.5 MINUTE SERIES (TOPOGRAPHIC)
NE/4 LAWRENCEBURG 15' QUADRANGLE



Maped, edited, and published by the Geological Survey in cooperation with Indiana Department of Natural Resources and Kentucky Geological Survey
Control by USGS, NOS/NOAA and USCE
Topography in Ohio and Kentucky by photogrammetric methods from aerial photographs taken 1949. Field checked 1951-1954. Topography in Indiana by plane-table surveys taken 1949. Field checked 1951-1954. Topography in Kentucky by plane-table surveys taken 1949. Field checked 1951-1954. Map edited 1957. Map edited 1961.
Polyconic projection, 10,000-foot grid ticks based on Ohio coordinate system, south zone, Indiana coordinate system, east zone and Kentucky coordinate system, north zone, 1000-meter Universal Transverse Mercator grid, zone 16.
1927 North American Datum
To place on the predicted North American Datum 1983, move the projection on lines 3 meters south and 5 meters west as shown by dashed corner ticks.
The state boundary as shown represents the approximate position of the low water line as determined from the U.S. Corps of Engineers Ohio River Charts surveyed 1914, and supplementary information.
Area west of the Great Miami River lies within the Miami River Survey. Area east of the Great Miami River lies within the Between the Miamis. Land lines in Ohio based on the Symmes Purchase.
There may be private inholdings within the boundaries of the National or State reservations shown on this map.

UTM GRID AND 1981 MAGNETIC NORTH DECLINATION AT CENTER OF SHEET
25° 44' 23" N
1° 23' 25" W



THIS MAP COMPLIES WITH NATIONAL MAP ACCURACY STANDARDS
FOR SALE BY U.S. GEOLOGICAL SURVEY, RESTON, VIRGINIA 22092,
INDIANA DEPARTMENT OF NATURAL RESOURCES, INDIANAPOLIS, INDIANA 46204,
KENTUCKY GEOLOGICAL SURVEY, LEXINGTON, KENTUCKY 40506,
AND KENTUCKY DEPARTMENT OF COMMERCE, FRANKFORT, KENTUCKY 40601
A FOLDER DESCRIBING TOPOGRAPHIC MAPS AND SYMBOLS IS AVAILABLE ON REQUEST



ROAD CLASSIFICATION
Primary highway, hard surface
Secondary highway, hard surface
Interstate Route
Light-duty road, hard or improved surface
Unimproved road
U.S. Route
State Route

HOOVEN, OHIO-IND.-KY.
NE/4 LAWRENCEBURG 15' QUADRANGLE
N3907.5-W8445.7.5
1981
DMA 4082 III NE-SERIES V852

RETURN TO:
USGS AND HISTORICAL MAP ARCHIVES

MAR 18 1982

2652