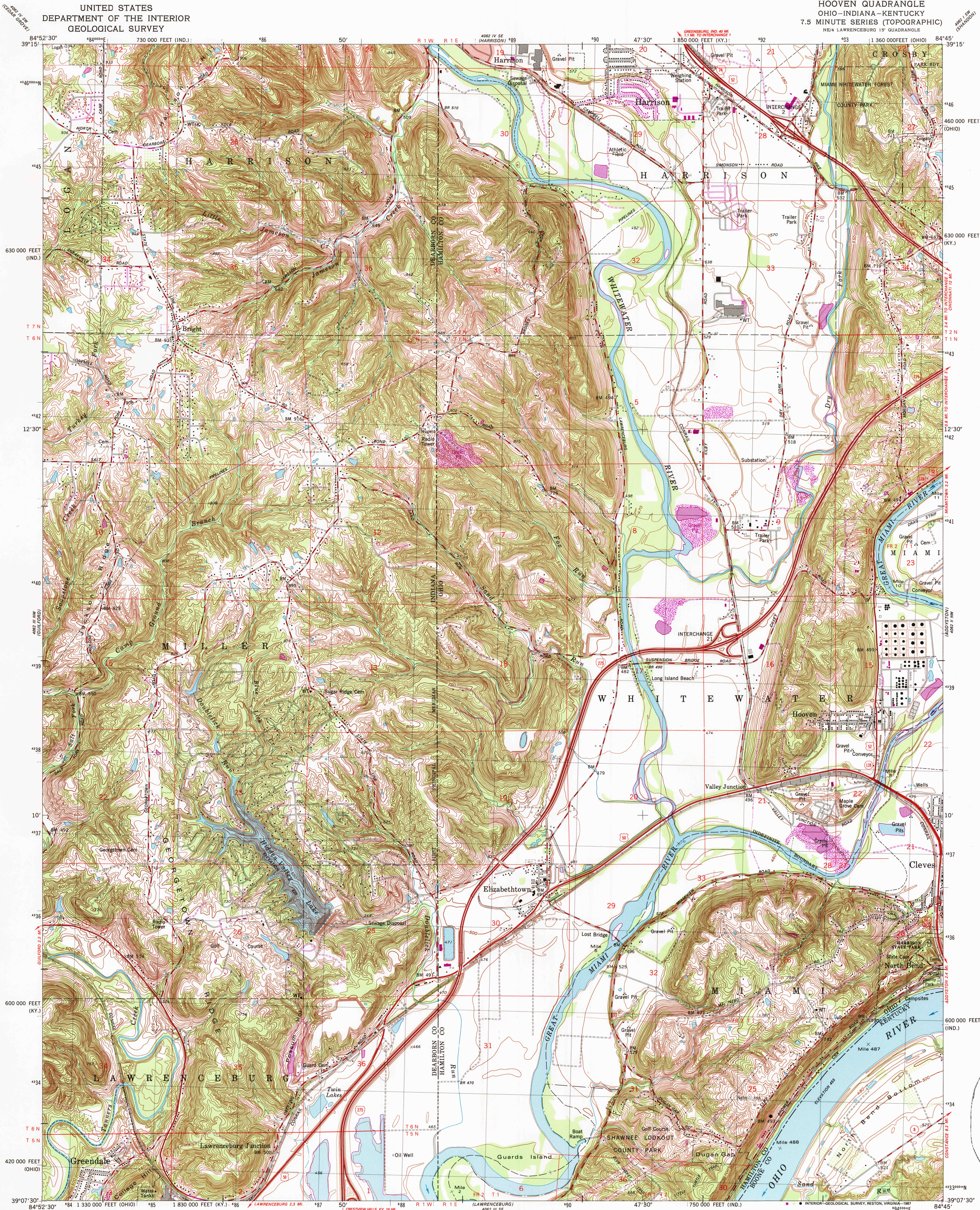
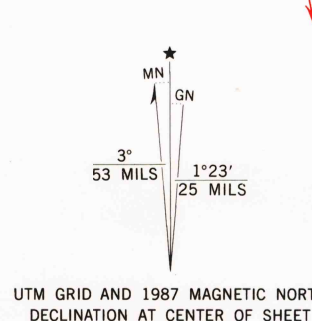


UNITED STATES
DEPARTMENT OF THE INTERIOR
GEOLOGICAL SURVEY

HOOVEN QUADRANGLE
OHIO-INDIANA-KENTUCKY
7.5 MINUTE SERIES (TOPOGRAPHIC)
NE 4 LAWRENCEBURG 15' QUADRANGLE



Mapped, edited, and published by the Geological Survey
in cooperation with Indiana Department of Natural Resources
and Kentucky Geological Survey
Control by USGS, NOS/NOAA and USCE
Topography in Ohio and Kentucky by photogrammetric methods from aerial photographs
taken 1945. Field checked 1951-1954. Topography in Indiana by planetable surveys 1940.
Revised from aerial photographs taken 1977. Field checked 1977. Map edited 1981.
Polyconic projection. 10,000-foot grid ticks based on Ohio coordinate system, south
zone. Indiana coordinate system, east zone and Kentucky coordinate system, north
zone. 1000-meter Universal Transverse Mercator grid, zone 16.
1927 North American Datum.
To place on the predicted North American Datum 1983, move the projection lines
3 meters south and 5 meters west as shown by dashed corner ticks.
Area east of the Great Miami River lies within the Miami River Survey. Area east of
the Great Miami River lies within the Between the Miamis. Land lines in Ohio based on the
Great Miami River Base. Dotted land lines established by private subdivision of the
Symmes Purchase.
There may be private inholdings within the boundaries of
the National or State reservations shown on this map.



THIS MAP COMPLIES WITH NATIONAL MAP ACCURACY STANDARDS
FOR SALE BY U. S. GEOLOGICAL SURVEY, DENVER, COLORADO 80225 OR RESTON, VIRGINIA 22092,
INDIANA DEPARTMENT OF NATURAL RESOURCES, INDIANAPOLIS, INDIANA 46204,
KENTUCKY GEOLOGICAL SURVEY, LEXINGTON, KENTUCKY 40506,
AND KENTUCKY DEPARTMENT OF COMMERCE, FRANKFORT, KENTUCKY 40601
A FOLDER DESCRIBING TOPOGRAPHIC MAPS AND SYMBOLS IS AVAILABLE ON REQUEST
Revisions shown in purple and woodland compiled in cooperation
with State of Kentucky agencies from aerial photographs taken 1984
and other sources. Contours not revised. This information not field checked
Map edited 1987



ROAD CLASSIFICATION
Primary highway, hard surface ——— Light-duty road, hard or improved surface ———
Secondary highway, hard surface ——— Unimproved road ———
Interstate Route — U. S. Route — State Route
HOOVEN, OHIO-IND.-KY.
NE 4 LAWRENCEBURG 15' QUADRANGLE
39084-B7-TF-024
1981
PHOTOREVISED 1987
DMA 4062 III NE-SERIES V852

USGS HISTORICAL MAP
JUN 02 1988
REC'D FILE COPY