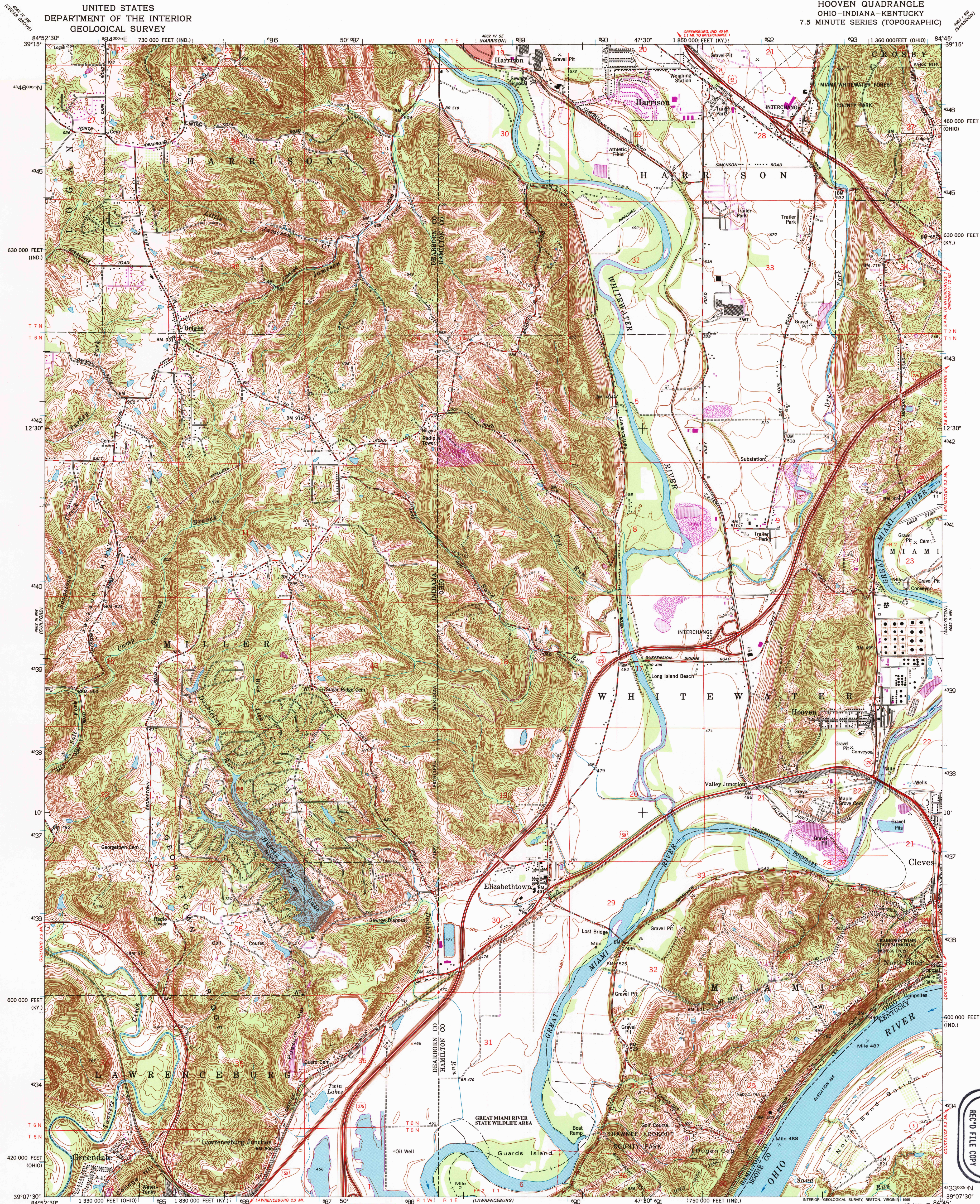
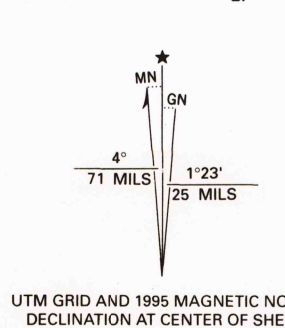


UNITED STATES
DEPARTMENT OF THE INTERIOR
GEOLOGICAL SURVEY

HOOVEN QUADRANGLE
OHIO-INDIANA-KENTUCKY
7.5 MINUTE SERIES (TOPOGRAPHIC)



Produced by the U. S. Geological Survey
in cooperation with Indiana Department of Natural Resources
and Kentucky Geological Survey
Topography in Ohio and Kentucky by photogrammetric methods from imagery
dated 1949. Field checked 1951-54. Topography in Indiana by planimetric
surveys 1940. Revised from imagery dated 1977. Field checked 1977.
Map edited 1981. Photomaps using imagery dated 1992, no major culture
or drainage changes observed. Boundaries and names revised 1995.
North American Datum of 1927 (NAD 27)
Projection: Ohio coordinate system, south zone
(Lambert conformal conic)
10 000-foot ticks; Ohio coordinate system, south zone Indiana coordinate
system, east zone and Kentucky coordinate system, north zone
Blue 1000-meter Universal Transverse Mercator grid ticks, zone 16
North American Datum of 1983 (NAD 83) is shown by dashed corner ticks
The values of the shift between NAD 27 and NAD 83 for 7.5-minute intersections
are obtainable from National Geographic Survey NADCON software
Area west of the Great Miami River lies within the Miami River Survey. Area east
of the Great Miami River lies within the Between the Miamis. Land lines in Ohio
based on the Great Miami River Base. Dotted land lines established by private
subdivision of the Symmes Purchase
There may be private inholdings within the boundaries of
the National or State reservations shown on this map



CONTOUR INTERVAL 10 FEET
NATIONAL GEODETIC VERTICAL DATUM OF 1929

THIS MAP COMPLIES WITH NATIONAL MAP ACCURACY STANDARDS
FOR SALE BY U. S. GEOLOGICAL SURVEY, DENVER, COLORADO 80225 OR RESTON, VIRGINIA 22092,
INDIANA DEPARTMENT OF NATURAL RESOURCES, INDIANAPOLIS, INDIANA 46204,
KENTUCKY GEOLOGICAL SURVEY, LEXINGTON, KENTUCKY 40506,
AND KENTUCKY DEPARTMENT OF COMMERCE, FRANKFORT, KENTUCKY 40601
A FOLDER DESCRIBING TOPOGRAPHIC MAPS AND SYMBOLS IS AVAILABLE ON REQUEST



ROAD CLASSIFICATION
Primary highway, hard surface
Secondary highway, hard surface
Unimproved road
Light-duty road, hard or improved surface
Interstate Route
U. S. Route
State Route

HOOVEN, OH-IN-KY
39084-87-TF-024
1992

DMA 4062 III NE-SERIES V852

Revisions shown in purple and woodland compiled in cooperation
with State of Kentucky agencies from imagery dated 1984 and other
sources. Contours not revised. This information not field checked
Map edited 1987

REC'D FILE COPY
JUN 15 1995
U.S. GEOLOGICAL SURVEY

