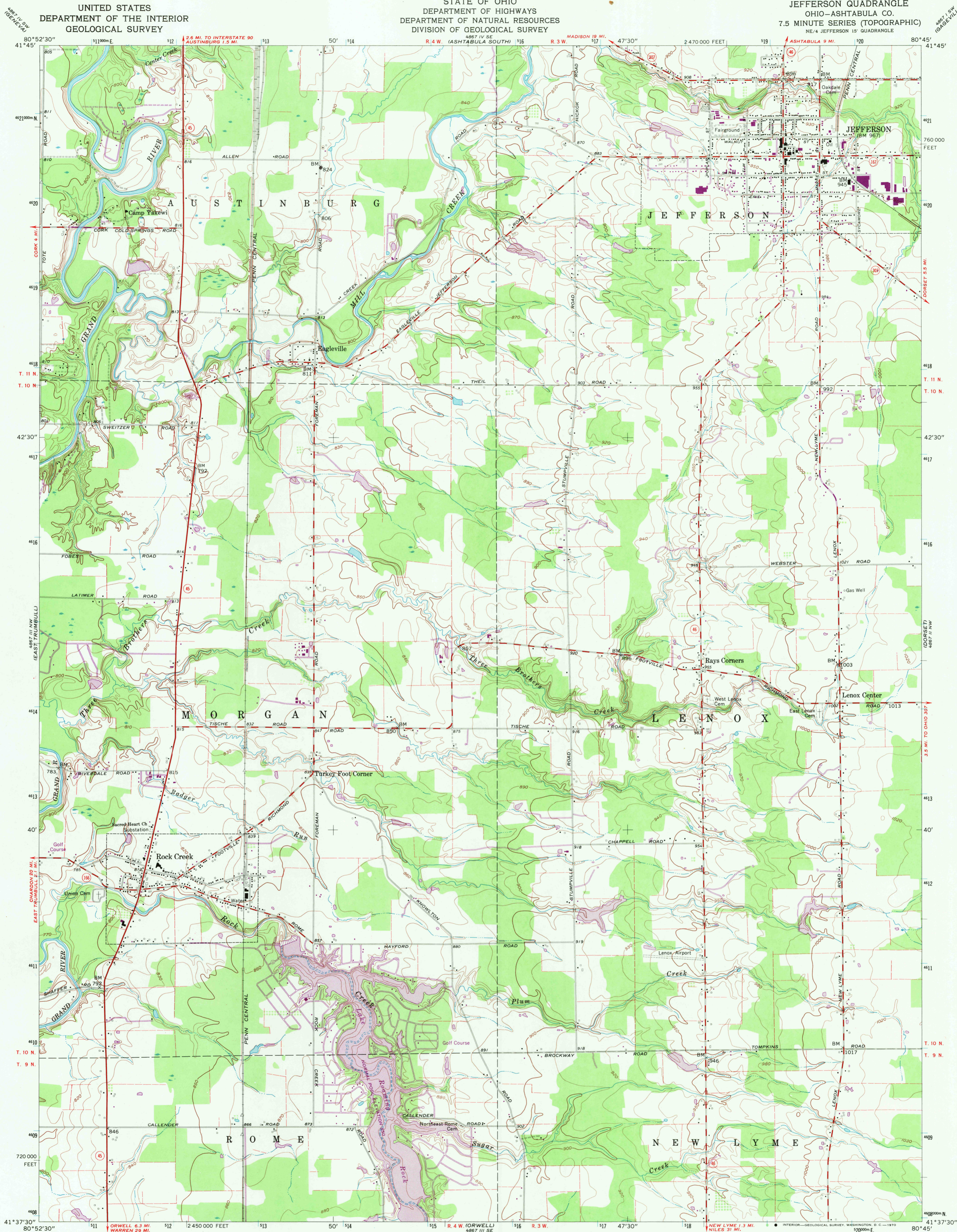


UNITED STATES
DEPARTMENT OF THE INTERIOR
GEOLOGICAL SURVEY

STATE OF OHIO
DEPARTMENT OF HIGHWAYS
DEPARTMENT OF NATURAL RESOURCES
DIVISION OF GEOLOGICAL SURVEY

JEFFERSON QUADRANGLE
OHIO-ASHTABULA CO.
7.5 MINUTE SERIES (TOPOGRAPHIC)
NE 4 JEFFERSON 15' QUADRANGLE



Mapped, edited, and published by the Geological Survey

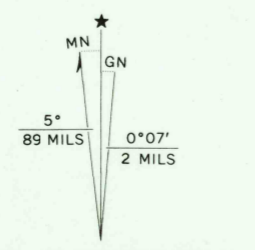
Control by USGS, USC&GS, and USCE

Planimetry by photogrammetric methods from aerial photographs taken 1952. Topography by planetable surveys 1960

Polyconic projection. 1927 North American datum
10,000-foot grid based on Ohio coordinate system, north zone
1000-meter Universal Transverse Mercator grid ticks,
zone 17, shown in blue

Fine red dashed lines indicate selected fence and field lines where
generally visible on aerial photographs. This information is unchecked

Entire area lies within the Connecticut Western Reserve
Land lines established by private subdivision of the
Connecticut Western Reserve



SCALE 1:24,000

CONTOUR INTERVAL 10 FEET

DATUM IS MEAN SEA LEVEL

THIS MAP COMPLIES WITH NATIONAL MAP ACCURACY STANDARDS
FOR SALE BY U. S. GEOLOGICAL SURVEY, WASHINGTON, D. C. 20242
A FOLDER DESCRIBING TOPOGRAPHIC MAPS AND SYMBOLS IS AVAILABLE ON REQUEST

USGS
Historical File
Topographic Division

HISTORICAL

U.S.G.S.

FILE COPY
TOPOGRAPHIC DIVISION

ROAD CLASSIFICATION

Heavy-duty ————
Medium-duty ————
Unimproved dirt ————
State Route ————

JEFFERSON, OHIO

NE 4 JEFFERSON 15' QUADRANGLE

N4137.5-W8045/7.5

1960
PHOTOREVISED 1970
AMS 4867 III NE-SERIES V852

DEC 7 1970