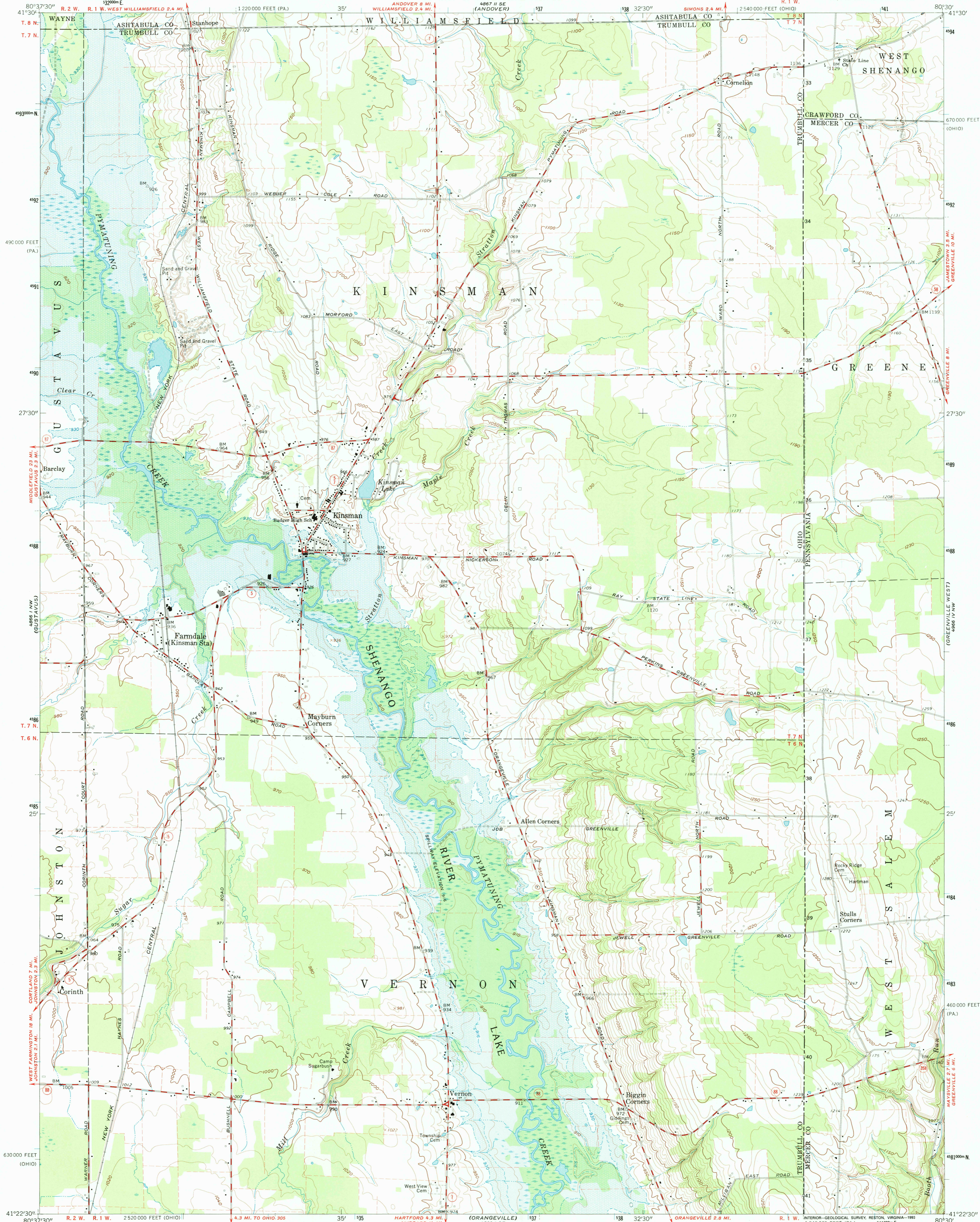


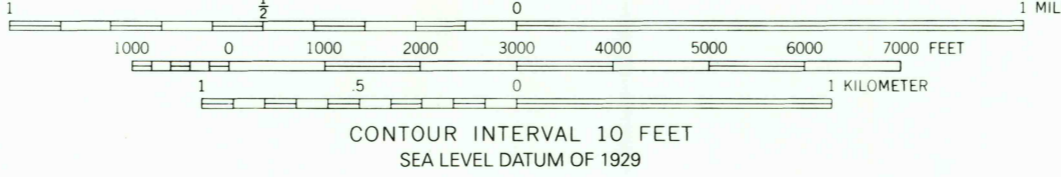
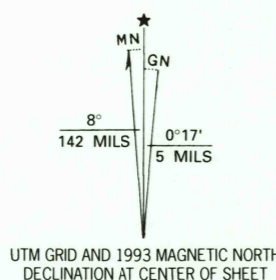
UNITED STATES  
DEPARTMENT OF THE INTERIOR  
GEOLOGICAL SURVEY

STATE OF OHIO  
DEPARTMENT OF HIGHWAYS  
DEPARTMENT OF NATURAL RESOURCES  
DIVISION OF GEOLOGICAL SURVEY

KINSMAN QUADRANGLE  
OHIO-PENNSYLVANIA  
7.5 MINUTE SERIES (TOPOGRAPHIC)  
NE/4 KINSMAN 15' QUADRANGLE



Produced by the United States Geological Survey  
Control by USGS, NOS/NOAA and USCE  
Topography by photogrammetric methods from aerial photographs  
taken 1961. Field checked 1961  
Projection and 10,000-foot grid ticks: Ohio coordinate  
system, north zone (transverse Mercator)  
1000-meter Universal Transverse Mercator grid ticks, zone 17, shown in blue  
1927 North American Datum (NAD 27)  
North American Datum of 1983 (NAD 83) is shown by dashed corner ticks  
The values of the shift between NAD 27 and NAD 83 for 7.5-minute  
intersections are given in USGS Bulletin 1875  
Blue hatching indicates areas to be submerged by Shenango River  
Lake. Areas covered by dashed light-blue pattern are  
subject to controlled inundation  
Ohio area lies within the Connecticut Western Reserve. Land lines  
established by private subdivision of the Connecticut Western Reserve  
Fine red dashed lines indicate selected fence and field lines where  
generally visible on aerial photographs. This information is unchecked  
Photorevised from 1991 source; no major culture or drainage  
changes observed. Names revised and boundaries verified 1993



THIS MAP COMPLIES WITH NATIONAL MAP ACCURACY STANDARDS  
FOR SALE BY U.S. GEOLOGICAL SURVEY  
DENVER, COLORADO 80225, OR RESTON, VIRGINIA 22092  
A FOLDER DESCRIBING TOPOGRAPHIC MAPS AND SYMBOLS IS AVAILABLE ON REQUEST



ROAD CLASSIFICATION  
Medium-duty ——— Light-duty ———  
Unimproved dirt ———  
State Route

KINSMAN, OHIO-PA.  
NE/4 KINSMAN 15' QUADRANGLE  
41080-D5-TF-024  
1961  
MINOR REVISION 1993  
DMA 4866 1 NE - SERIES V852