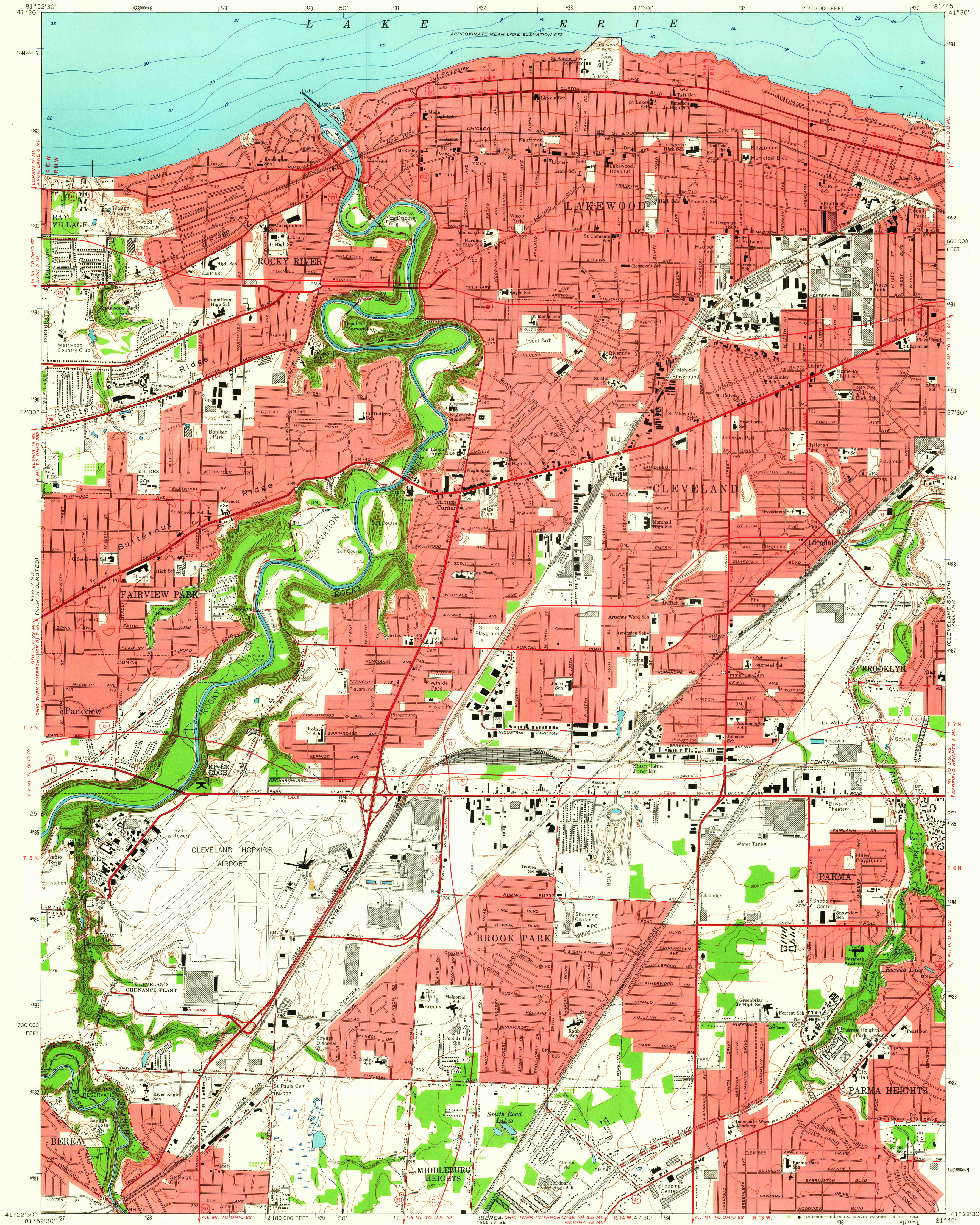


UNITED STATES
DEPARTMENT OF THE INTERIOR
GEOLOGICAL SURVEY

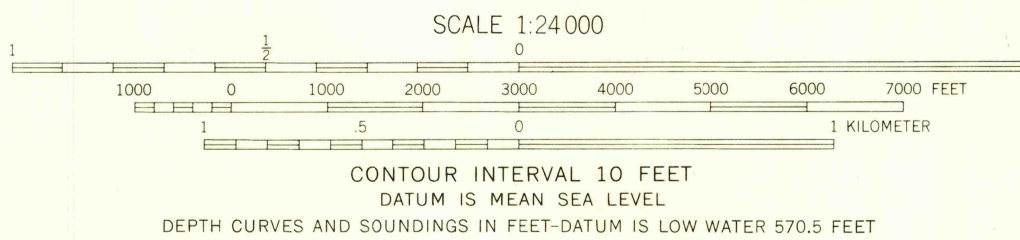
LAKEWOOD QUADRANGLE
OHIO—CUYAHOGA CO.
7.5 MINUTE SERIES (TOPOGRAPHIC)
NE 1/4 BERE A 15' QUADRANGLE

4661 IV SW
(CLEVELAND NORTH)



Mapped, edited, and published by the Geological Survey
Revised in cooperation with State of Ohio agencies
Control by USGS, USC&GS, and Cleveland Regional Geodetic Survey
Planimetry by photogrammetric methods from aerial photographs taken
1952. Topography by planimetric surveys 1953. Revised from
aerial photographs taken 1962. Field checked 1963
Selected hydrographic data compiled from U. S. Lake Survey Chart 35
(1959) This information is not intended for navigational purposes
Polyconic projection. 1927 North American datum
10,000-foot grid based on Ohio coordinate system, north zone
1000-meter Universal Transverse Mercator grid ticks,
zone 17, shown in blue
Fine red dashed lines indicate selected fence and field lines where
generally visible on aerial photographs. This information is unchecked
Red tint indicates areas in which only landmark buildings are shown
Entire area lies within the Connecticut Western Reserve.
Dotted land lines established by private subdivision of the
Connecticut Western Reserve

UTM GRID AND 1963 MAGNETIC NORTH
DECLINATION AT CENTER OF SHEET



THIS MAP COMPLIES WITH NATIONAL MAP ACCURACY STANDARDS
FOR SALE BY U. S. GEOLOGICAL SURVEY, WASHINGTON 25, D. C.
A FOLDER DESCRIBING TOPOGRAPHIC MAPS AND SYMBOLS IS AVAILABLE ON REQUEST

USGS
Historical File
Topographic Division



ROAD CLASSIFICATION
Heavy-duty ——— Light-duty ———
Medium-duty ——— Unimproved dirt ———
Interstate Route U. S. Route State Route

U.S.G.S.
FILE COPY
TOPOGRAPHIC DIVISION

LAKEWOOD, OHIO
NE 1/4 BERE A 15' QUADRANGLE
N4122.5—W8145/7.5

1963
AMS 4661 IV NE—SERIES V852

NOV 17 1964

3665