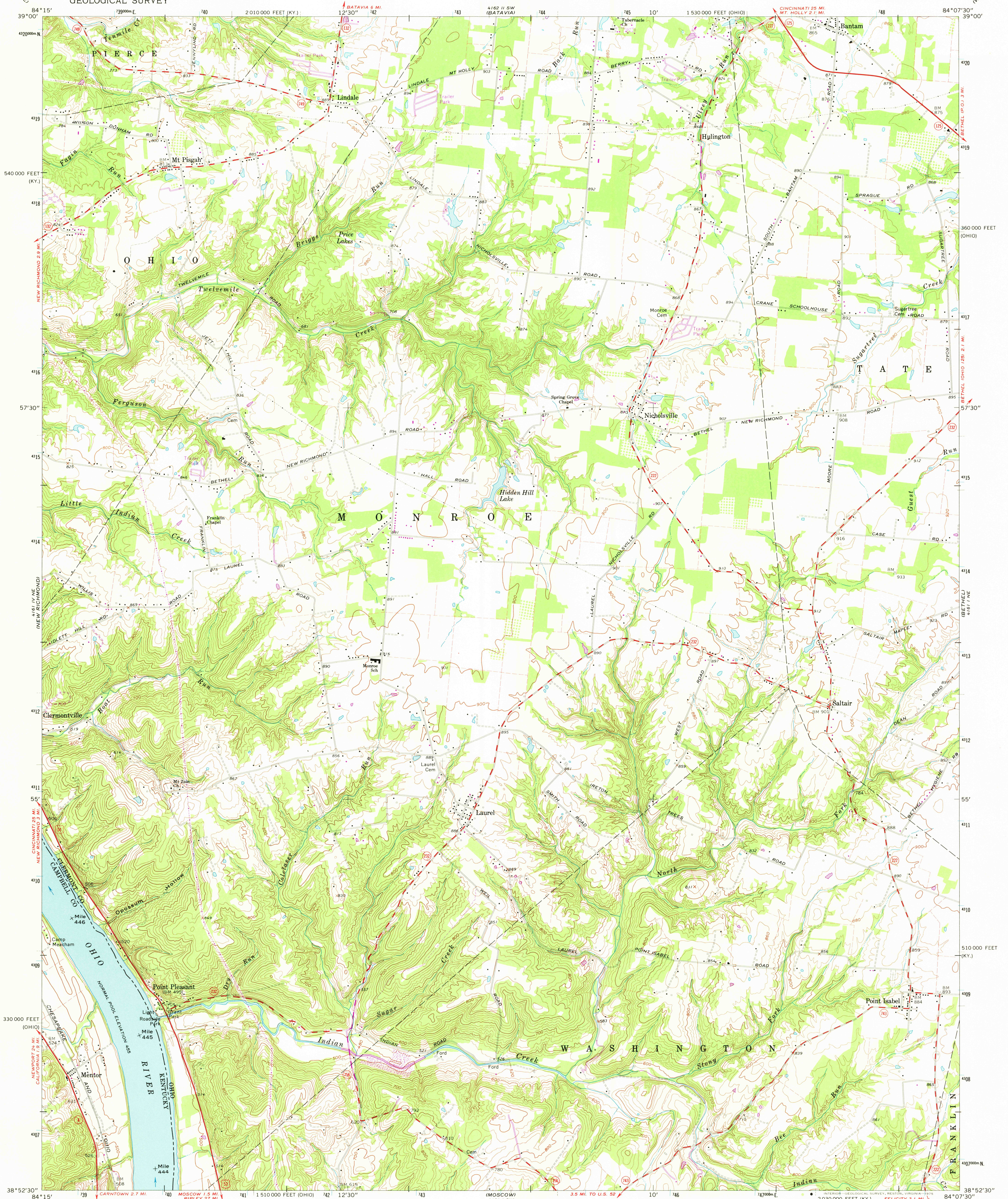
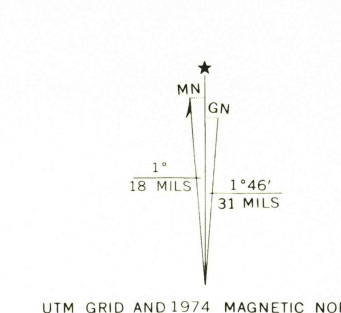


UNITED STATES
DEPARTMENT OF THE INTERIOR
GEOLOGICAL SURVEY

LAUREL QUADRANGLE
OHIO-KENTUCKY
7.5 MINUTE SERIES (TOPOGRAPHIC)



Maped, edited, and published by the Geological Survey
Revised in cooperation with State of Ohio agencies
Control by USGS and NOS/NOAA
Topography by photogrammetric methods from aerial photographs
taken 1952. Field checked 1953. Revised from aerial photographs
taken 1967. Field checked 1968.
Polyconic projection. 1927 North American datum
10,000-foot grids based on Ohio coordinate system,
south zone, and Kentucky coordinate system, north zone
1000-metre Universal Transverse Mercator grid ticks, zone 16,
shown in blue.
Fine red dashed lines indicate selected fence and field lines where
generally visible on aerial photographs. This information is unchecked.
The state boundary as shown represents the approximate position of the low
water line as determined from U. S. Corps of Engineers Ohio River charts,
surveyed 1913 and 1914, and supplementary information.
Ohio area lies within the Virginia Military District.



THIS MAP COMPLIES WITH NATIONAL MAP ACCURACY STANDARDS
FOR SALE BY U. S. GEOLOGICAL SURVEY, RESTON, VIRGINIA 22092
KENTUCKY GEOLOGICAL SURVEY, LEXINGTON, KENTUCKY 40506,
AND KENTUCKY DEPARTMENT OF COMMERCE, FRANKFORT, KENTUCKY 40601
A FOLDER DESCRIBING TOPOGRAPHIC MAPS AND SYMBOLS IS AVAILABLE ON REQUEST

Revisions shown in purple compiled in cooperation with
State of Ohio agencies from aerial photographs taken
1974. This information not field checked.

ROAD CLASSIFICATION
Primary highway, all weather, hard surface
Secondary highway, all weather, hard surface
Light-duty road, all weather, improved surface
Unimproved road, fair or dry weather
U. S. Route
State Route
USGS
HISTORICAL FILE
TOPOGRAPHIC DIVISION
LAUREL, OHIO-KY.
N8352.5-W8407.5/7.5
1968
PHOTOREVISED 1974
AMS 4161 1 NW-SERIES V852
MAY 22 1975