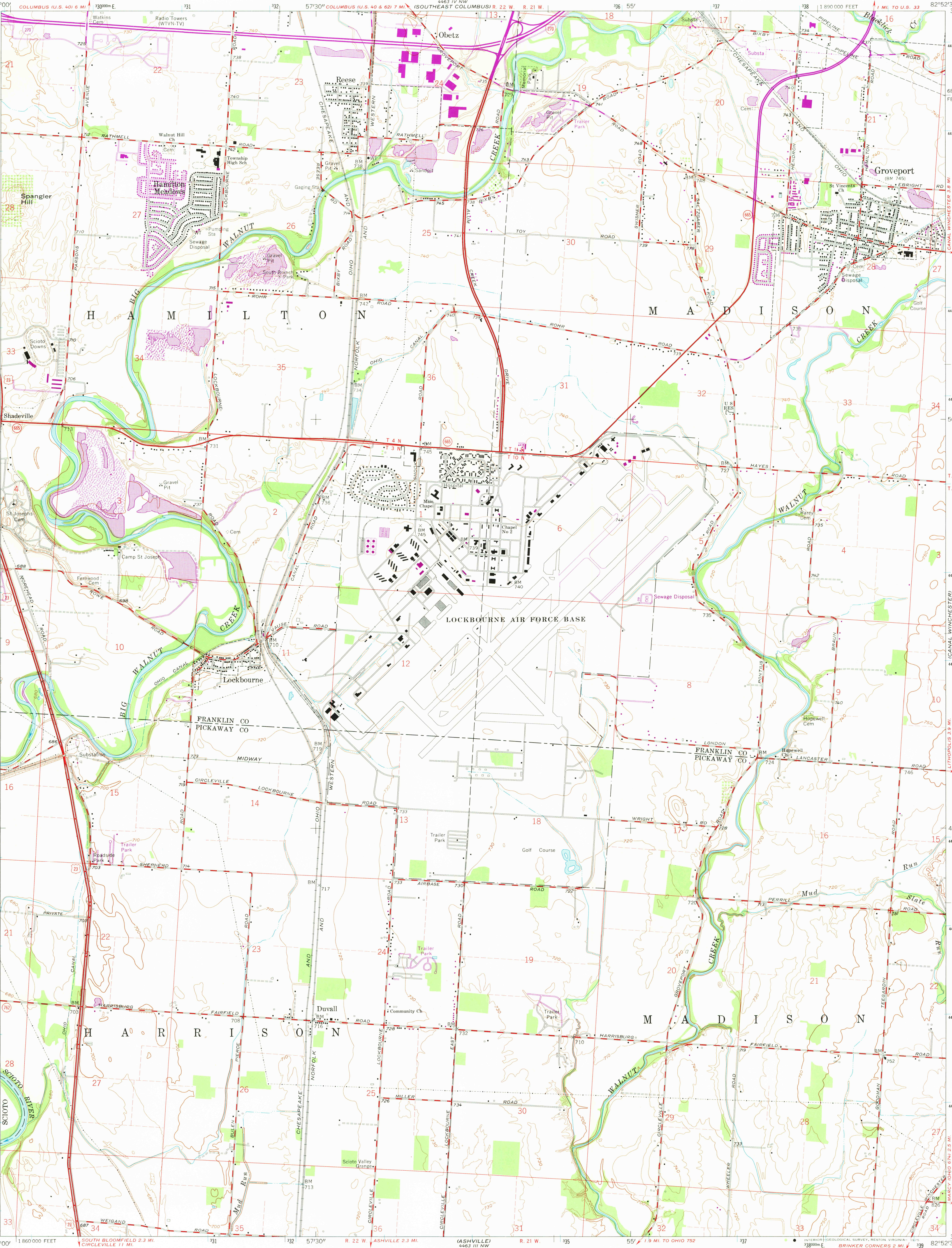
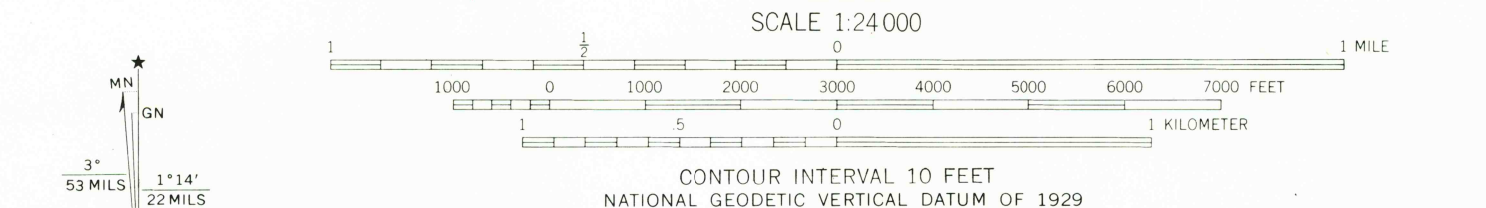


UNITED STATES
DEPARTMENT OF THE INTERIOR
GEOLOGICAL SURVEY

LOCKBOURNE QUADRANGLE
OHIO
7.5 MINUTE SERIES (TOPOGRAPHIC)



Mapped, edited, and published by the Geological Survey
Revised in cooperation with State of Ohio agencies
Control by USGS and USC&GS
Topography by photogrammetric methods from aerial photographs
taken 1953. Field checked 1955. Revised 1964
Polyconic projection. 1927 North American datum
10,000-foot grid based on Ohio coordinate system, south zone
1000-meter Universal Transverse Mercator grid ticks,
zone 17, shown in blue
Fine red dashed lines indicate selected fence and field lines where
generally visible on aerial photographs. This information is unchecked
Area west of Scioto River lies within the Virginia Military District
Area east of Scioto River lies within Congress Lands east of the Scioto River
Land lines within Ts. 3 and 4 N.-R. 22 W. based on the Scioto River Base
Land lines within Ts. 10 and 11 N.-R. 21 W. based on the Ohio River Base



THIS MAP COMPLIES WITH NATIONAL MAP ACCURACY STANDARDS
FOR SALE BY U. S. GEOLOGICAL SURVEY, RESTON, VIRGINIA 22092
A FOLDER DESCRIBING TOPOGRAPHIC MAPS AND SYMBOLS IS AVAILABLE ON REQUEST

ROAD CLASSIFICATION
Heavy-duty ——— Light-duty ———
Medium-duty ——— Unimproved dirt ———
Interstate Route U. S. Route State Route

USGS
HISTORICAL FILE
TOPOGRAPHIC DIVISION

LOCKBOURNE, OHIO JUN 06 1975
N3945-WB252.5/7.5
1964
PHOTOREVISED 1974
AMS 4463 IV SW-SERIES V852

Revisions shown in purple compiled in cooperation with
State of Ohio agencies from aerial photographs taken
1974. This information not field checked.