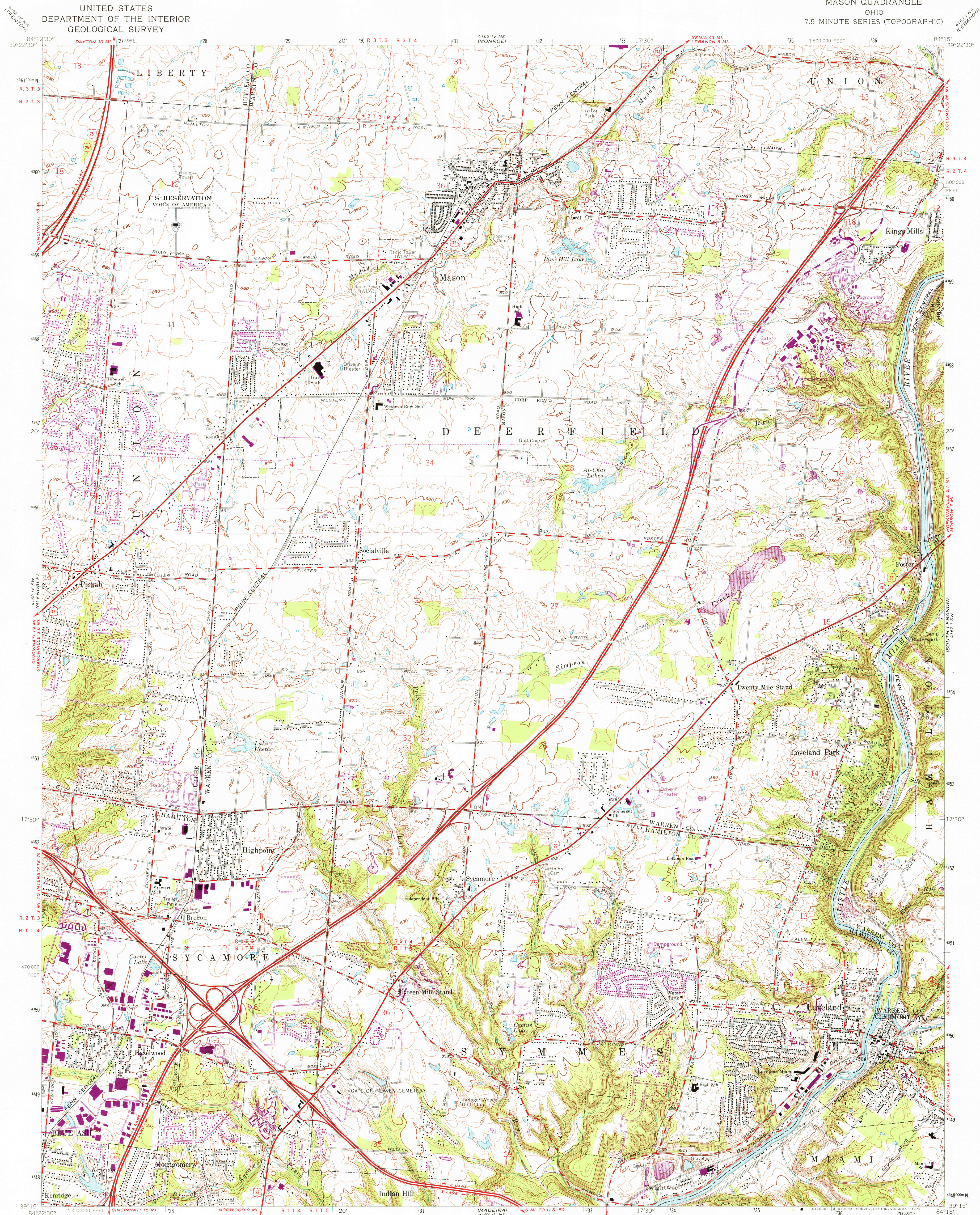
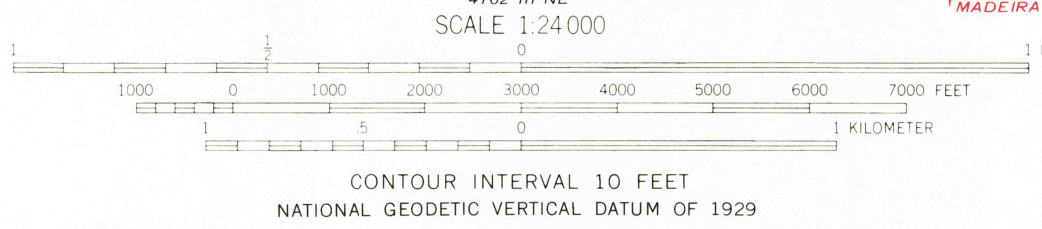


UNITED STATES
DEPARTMENT OF THE INTERIOR
GEOLOGICAL SURVEY

MASON QUADRANGLE
OHIO
7.5 MINUTE SERIES (TOPOGRAPHIC)



Mapped, edited, and published by the Geological Survey in cooperation with the Army Map Service. Revised in cooperation with State of Ohio agencies. Control by USGS, USC&GS, and City of Cincinnati. Topography by photogrammetric methods from aerial photographs taken 1954. Field checked 1955. Revised 1965. Polyconic projection. 1927 North American datum. 10,000-foot grid based on Ohio coordinate system; south zone. 1000-meter Universal Transverse Mercator grid ticks, zone 16, shown in blue. Fine red dashed lines indicate selected fence and field lines where generally visible on aerial photographs. This information is unchecked. Area east of the Little Miami River lies within the Virginia Military District. Area west of the Little Miami River lies within the Between the Miamis. Land lines based on the Great Miami River Base. Dotted land lines established by private subdivision of the Symmes Purchase.



ROAD CLASSIFICATION
Heavy-duty ——— Light-duty ———
Medium-duty ——— Unimproved dirt ———
○ Interstate Route ○ U.S. Route ○ State Route



USGS
HISTORICAL FILE
TOPOGRAPHIC DIVISION

MASON, OHIO
N3915—W8415/7.5

1965
PHOTOREVISED 1974
AMS 4162 IV SE—SERIES V852

THIS MAP COMPLIES WITH NATIONAL MAP ACCURACY STANDARDS
FOR SALE BY U.S. GEOLOGICAL SURVEY, RESTON, VIRGINIA 22092
A FOLDER DESCRIBING TOPOGRAPHIC MAPS AND SYMBOLS IS AVAILABLE ON REQUEST

Revisions shown in purple compiled in cooperation with
State of Ohio agencies from aerial photographs taken
1974. This information not field checked.

RETURN TO:
USGS AND HISTORICAL MAP ARCHIVES

FEB 10 1976