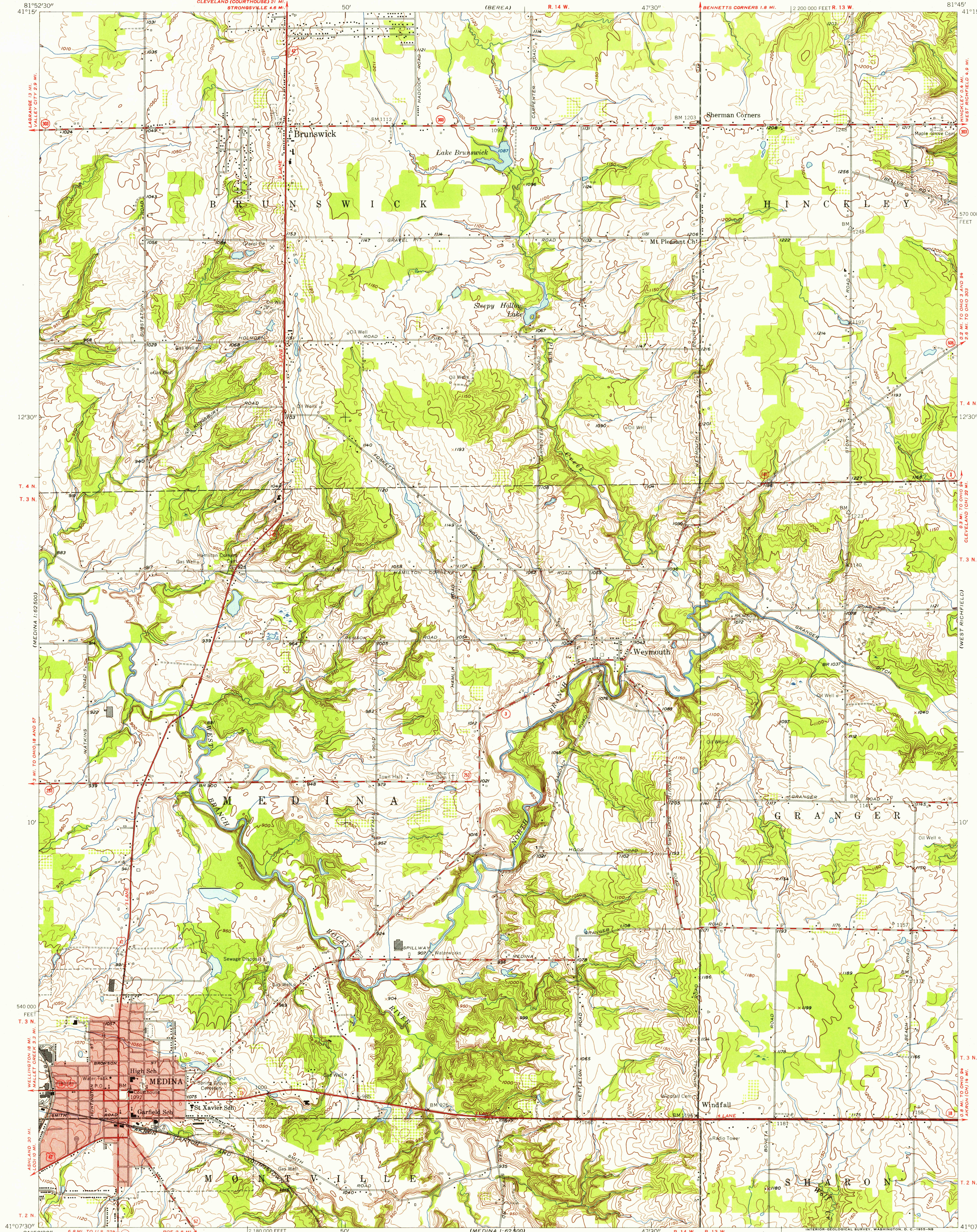


UNITED STATES
DEPARTMENT OF THE INTERIOR
GEOLOGICAL SURVEY

MEDINA QUADRANGLE
OHIO—MEDINA CO.
7.5 MINUTE SERIES (TOPOGRAPHIC)
NE 1/4 MEDINA 15' QUADRANGLE

U.S.G.S.
FILE COPY
TOPOGRAPHIC DIVISION



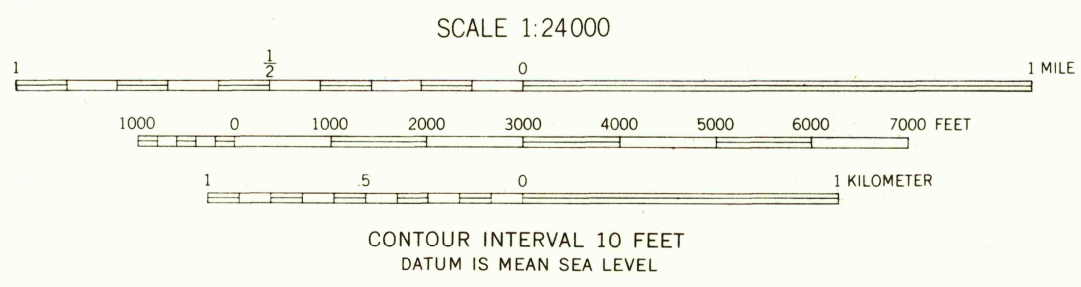
Mapped, edited, and published by the Geological Survey
Control by USGS and USCGS

Topography from aerial photographs by Kelsch plotter
Aerial photographs taken 1952. Field check 1953
Polyconic projection. 1927 North American datum
10,000-foot grid based on Ohio coordinate system,
north zone

Red tint indicates area in which only
landmark buildings are shown

Entire area lies within the Connecticut Western Reserve
Land lines were established by the Connecticut Land Company

35°
TRUE NORTH
MAGNETIC NORTH
APPROXIMATE MEAN
DECLINATION, 1953



THIS MAP COMPLIES WITH NATIONAL MAP ACCURACY STANDARDS
FOR SALE BY U. S. GEOLOGICAL SURVEY, WASHINGTON, 25, D. C.
A FOLDER DESCRIBING TOPOGRAPHIC MAPS AND SYMBOLS IS AVAILABLE ON REQUEST

USGS
Historical Files
Topographic Division



ROAD CLASSIFICATION
Heavy-duty 4 LANE 16 LANE Light-duty
Medium-duty 4 LANE 16 LANE Unimproved dirt
U. S. Route State Route

MEDINA, OHIO
NE 1/4 MEDINA 15' QUADRANGLE
N 41° 07' 30" W 81° 45' 15"

1953

U.S.G.S.
FILE COPY
TOPOGRAPHIC DIVISION

MAY 9 1955

3000