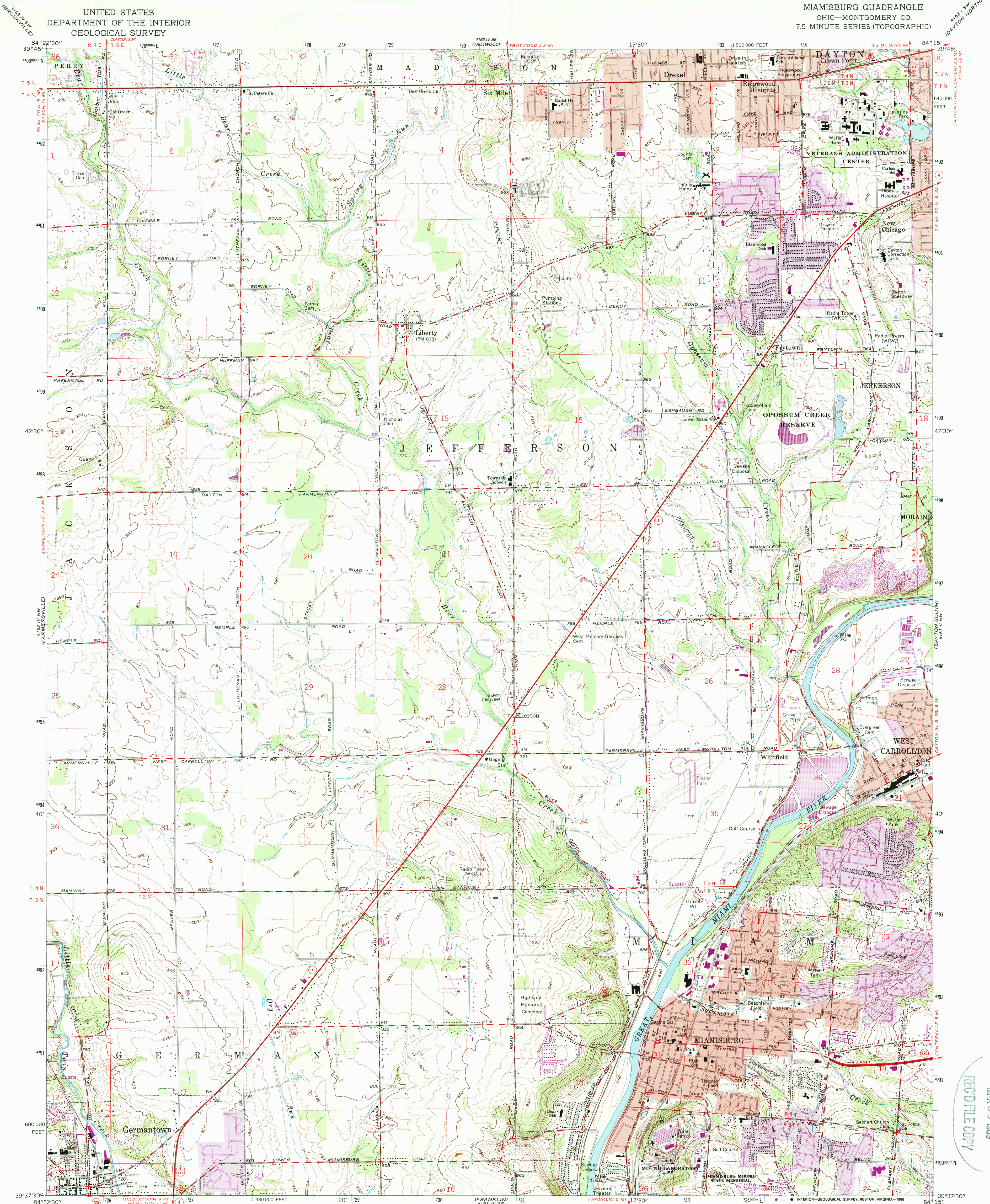


UNITED STATES
DEPARTMENT OF THE INTERIOR
GEOLOGICAL SURVEY

MIAMISBURG QUADRANGLE
OHIO—MONTGOMERY CO.
7.5 MINUTE SERIES (TOPOGRAPHIC)



Mapped, edited, and published by the Geological Survey
in cooperation with the Army Map Service
Revised in cooperation with State of Ohio agencies
Control by USGS and USC&GS
Topography by photogrammetric methods from aerial photographs
taken 1954. Field checked 1955. Revised 1965
Polyconic projection. 1927 North American datum
10,000-foot grid based on Ohio coordinate system, south zone
1000-meter Universal Transverse Mercator grid ticks, zone 16, shown in blue
To place on the predicted North American Datum 1983
move the projection lines 2 meters south and
6 meters west as shown by dashed corner ticks
Fine red dashed lines indicate selected fence and field lines where
generally visible on aerial photographs. This information is unchecked
Map edited 1987
Red tint indicates areas in which only landmark buildings are shown

Revisions shown in purple and woodland compiled in cooperation
with State of Ohio agencies from aerial photographs taken
1984 and other sources. This information not field checked
Map edited 1987
Purple tint indicates extension of urban areas

THIS MAP COMPLIES WITH NATIONAL MAP ACCURACY STANDARDS
FOR SALE BY U.S. GEOLOGICAL SURVEY
DENVER, COLORADO 80225 OR RESTON, VIRGINIA 22092
A FOLDER DESCRIBING TOPOGRAPHIC MAPS AND SYMBOLS IS AVAILABLE ON REQUEST

Area east of the Great Miami River lies within the Between the Miamis
Area west of the Great Miami River lies within the Miami River Survey
Land lines based on the Great Miami River Base
There may be private inholdings within the boundaries
of the National or State reservations shown on this map

MIAMISBURG, OHIO
39084-F3-TF-024

1965
PHOTOREVISED 1987
DMA 4163 III NE—SERIES V852