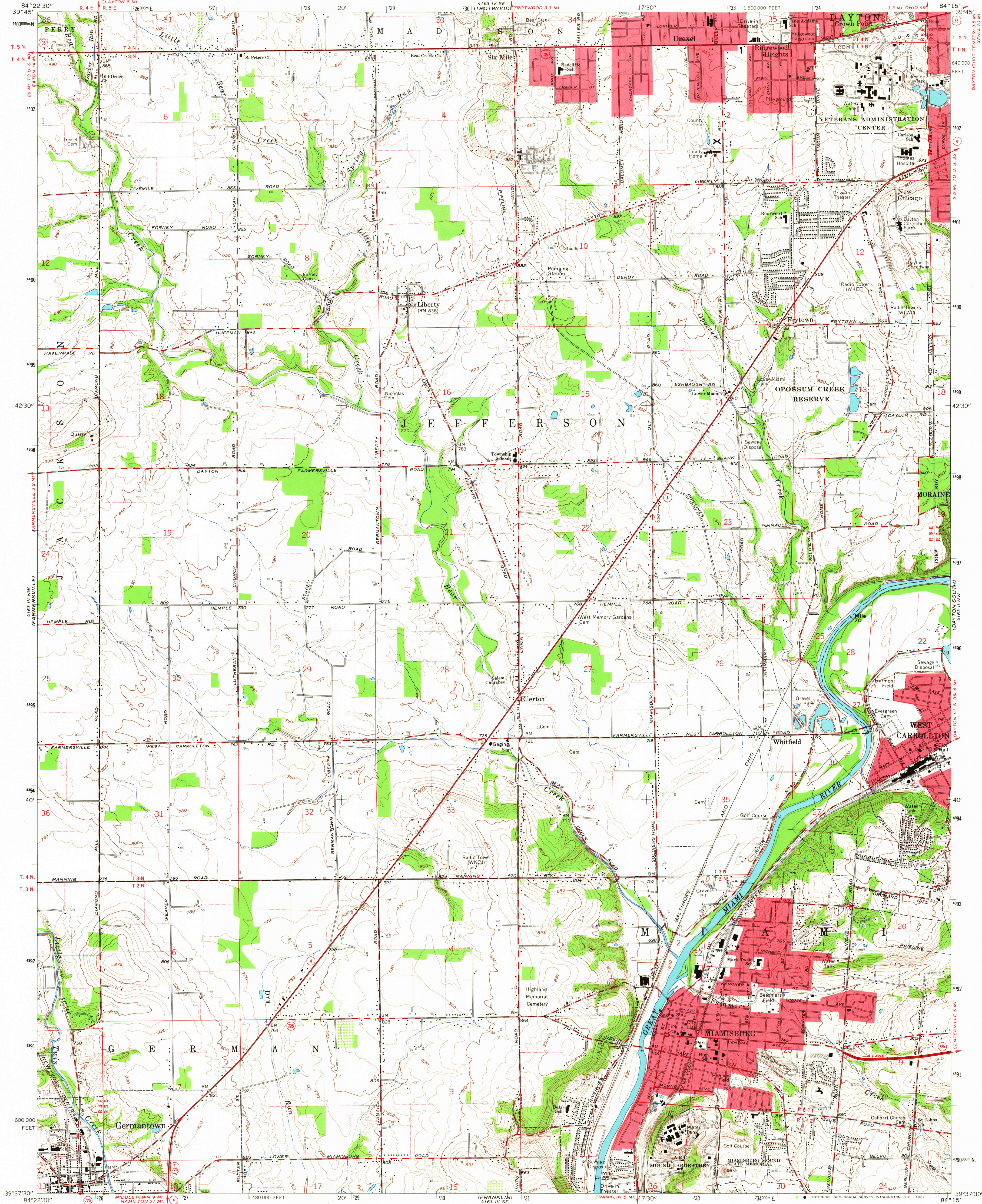
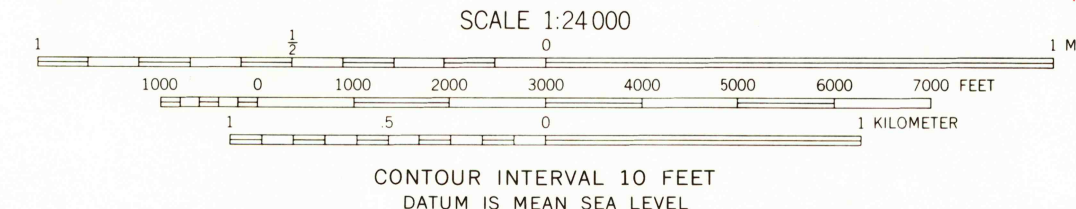
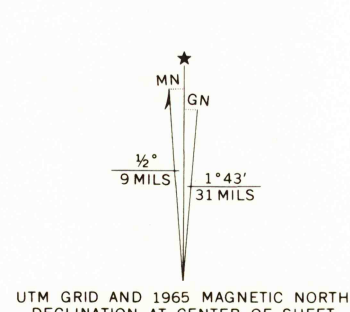


UNITED STATES
DEPARTMENT OF THE INTERIOR
GEOLOGICAL SURVEY

MIAMISBURG QUADRANGLE
OHIO—MONTGOMERY CO.
7.5 MINUTE SERIES (TOPOGRAPHIC)
NE/4 MIAMISBURG 15' QUADRANGLE



Mapped, edited, and published by the Geological Survey
in cooperation with the Army Map Service
Revised in cooperation with State of Ohio agencies
Control by USGS and USC&GS
Topography by photogrammetric methods from aerial photographs
taken 1954. Field checked 1955. Revised 1965
Polyconic projection, 1927 North American datum
10,000-foot grid based on Ohio coordinate system, south zone
1000-meter Universal Transverse Mercator grid ticks, zone 16, shown in blue
Fine red dashed lines indicate selected fence and field lines where
generally visible on aerial photographs. This information is unchecked
Red tint indicates areas in which only landmark buildings are shown
Area east of the Great Miami River lies within the Between the Miams
Area west of the Great Miami River lies within the Miami River Survey
Land lines based on the Great Miami River Base



USGS
Historical File
Topographic Division
U.S.G.S.
TOPOGRAPHIC DIVISION
OHIO
QUADRANGLE LOCATION

ROAD CLASSIFICATION
Heavy-duty ——— Light-duty ———
Medium-duty ——— Unimproved dirt ———
U.S. Route ——— State Route ———

MIAMISBURG, OHIO
NE/4 MIAMISBURG 15' QUADRANGLE
N3937.5—W8415.7/5
1965
AMS 4163 III NE—SERIES V852

3505
JAN 17 1968