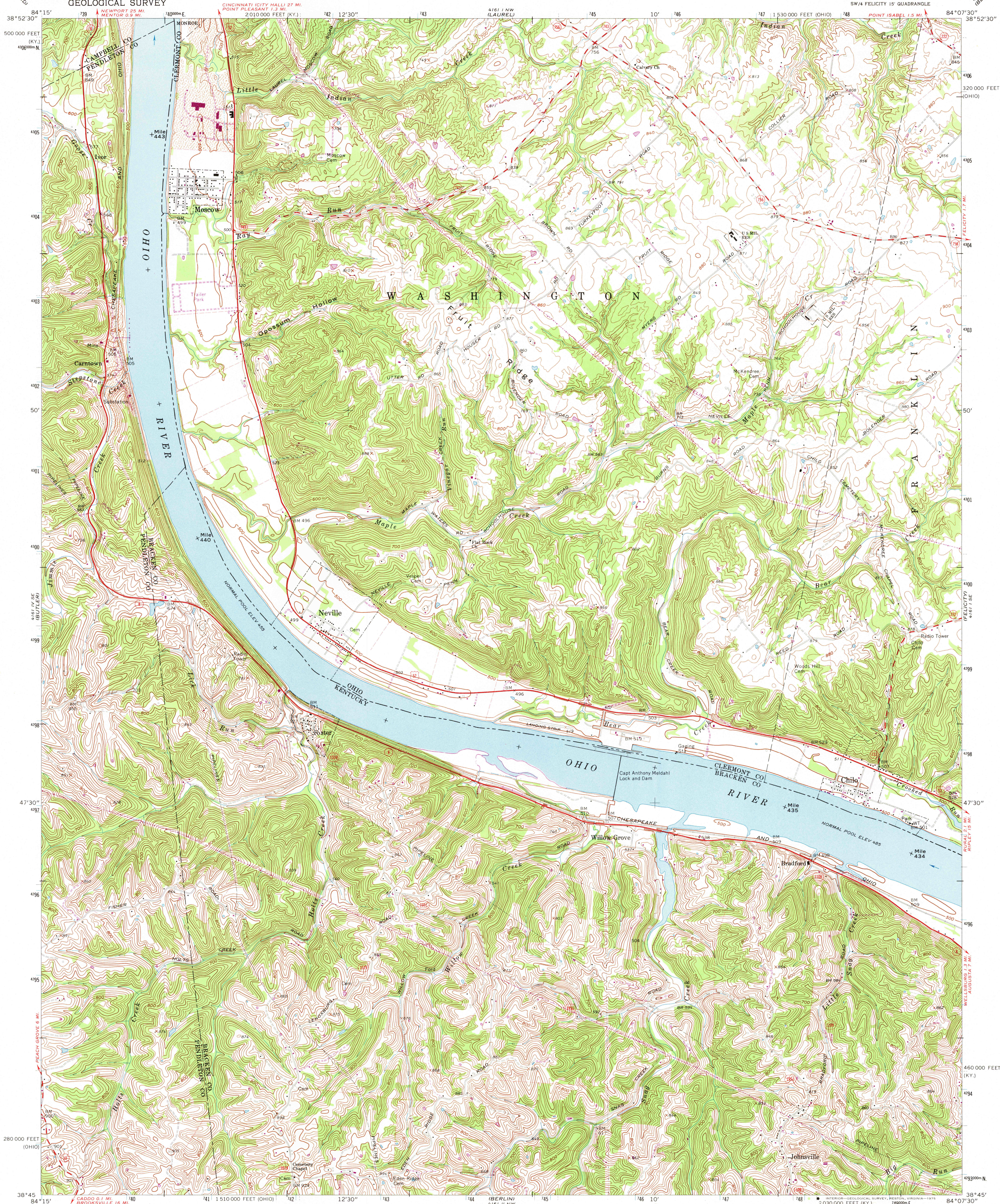
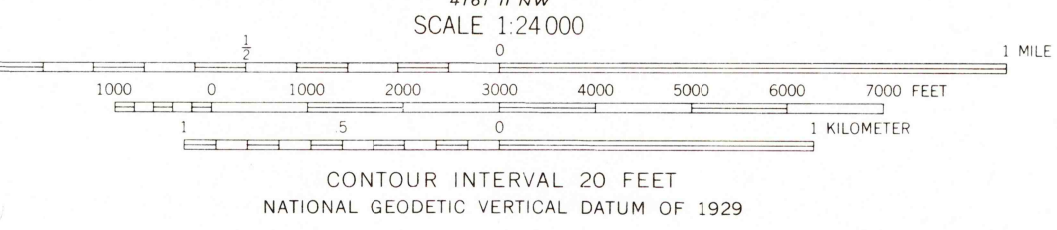
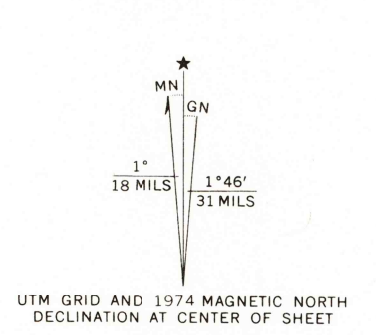


UNITED STATES  
DEPARTMENT OF THE INTERIOR  
GEOLOGICAL SURVEY

MOSCOW QUADRANGLE  
OHIO-KENTUCKY  
7.5 MINUTE SERIES (TOPOGRAPHIC)  
SW 1/4 FELICITY 15' QUADRANGLE



Mapped, edited, and published by the Geological Survey  
Revised in cooperation with State of Ohio agencies  
Control by USGS, USC&GS, and USCE  
Topography by photogrammetric methods from aerial photographs  
taken 1950 and 1952. Field checked 1953. Revised from aerial  
photographs taken 1967. Field checked 1968  
Polyconic projection. 1927 North American datum  
10,000-foot grids based on Ohio coordinate system, south zone,  
and Kentucky coordinate system, north zone  
1000-meter Universal Transverse Mercator grid ticks,  
zone 16, shown in blue  
Fine red dashed lines indicate selected fence and field lines where  
generally visible on aerial photographs. This information is unchecked  
The state boundary as shown represents the approximate position  
of the low water line as determined from U.S. Corps of Engineers  
Ohio River charts, surveyed 1913-1914, and supplementary information  
Ohio area lies within the Virginia Military District



THIS MAP COMPLIES WITH NATIONAL MAP ACCURACY STANDARDS  
FOR SALE BY U.S. GEOLOGICAL SURVEY, RESTON, VIRGINIA 22092  
KENTUCKY GEOLOGICAL SURVEY, LEXINGTON, KENTUCKY 40506,  
AND KENTUCKY DEPARTMENT OF COMMERCE, FRANKFORT, KENTUCKY 40601  
A FOLDER DESCRIBING TOPOGRAPHIC MAPS AND SYMBOLS IS AVAILABLE ON REQUEST

Revisions shown in purple compiled in cooperation with  
State of Ohio agencies from aerial photographs taken  
1974. This information not field checked.

ROAD CLASSIFICATION  
Primary highway, all weather, light-duty road, all weather,  
hard surface, improved surface  
Secondary highway, all weather, unimproved road, fair or dry  
weather, weather  
U.S. Route  
State Route



USGS  
HISTORICAL FILE  
TOPOGRAPHIC DIVISION

MOSCOW, OHIO-KY.  
SW 1/4 FELICITY 15' QUADRANGLE  
N3845-W8407.5/7.5  
1968  
PHOTOREVISED 1974  
AMS 4161 I SW-SERIES V852

DEC 08 1975