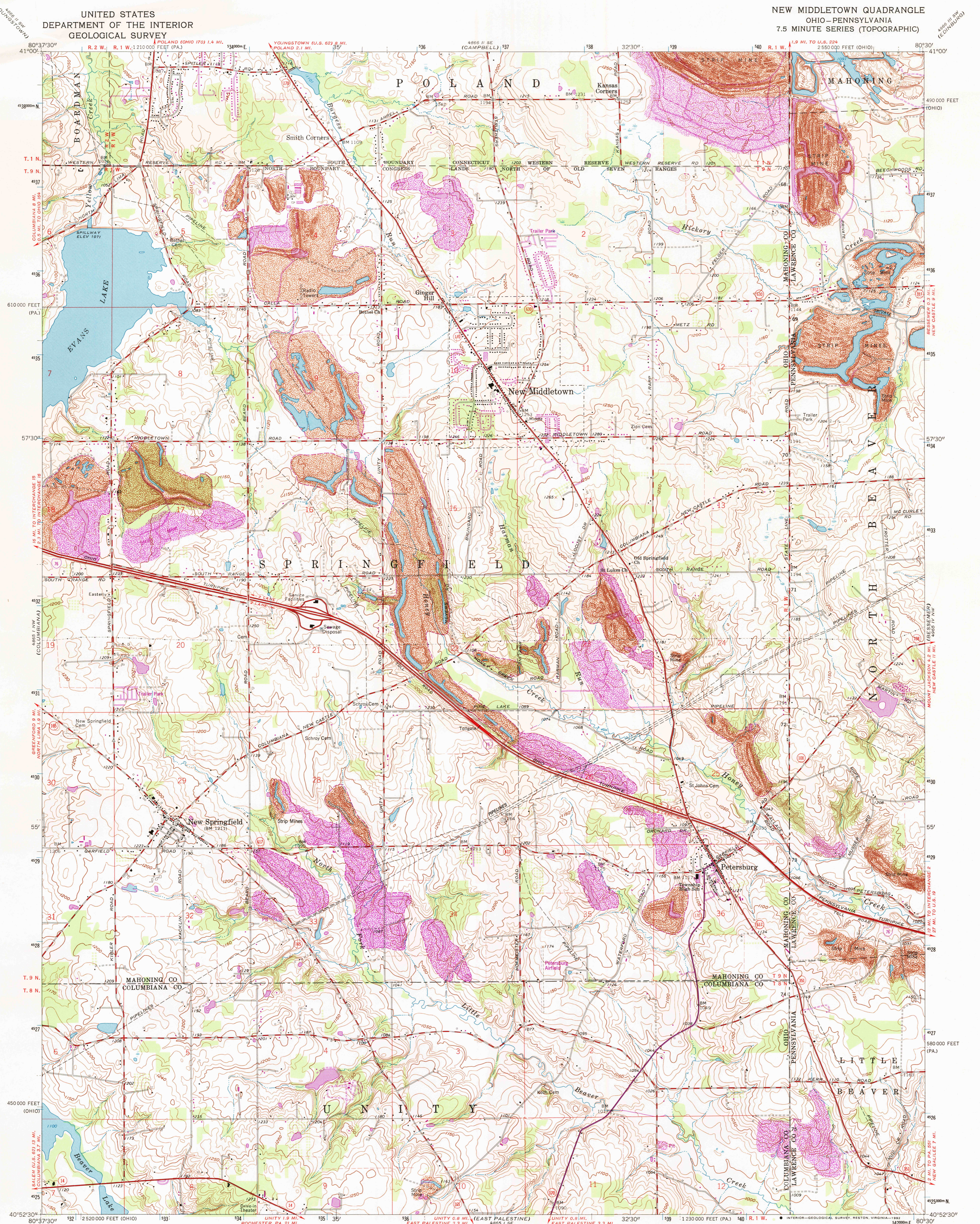


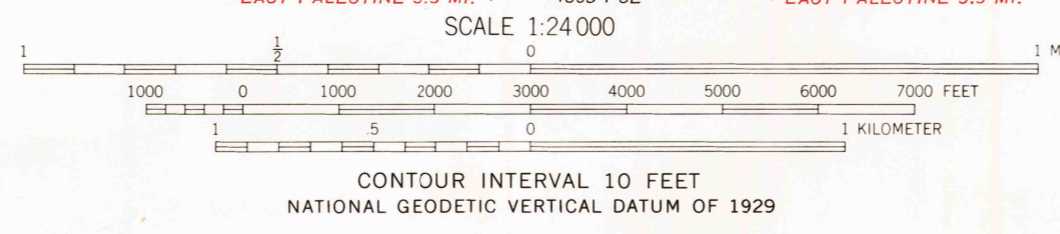
UNITED STATES  
DEPARTMENT OF THE INTERIOR  
GEOLOGICAL SURVEY

NEW MIDDLETOWN QUADRANGLE  
OHIO—PENNSYLVANIA  
7.5 MINUTE SERIES (TOPOGRAPHIC)



Maped, edited, and published by the Geological Survey  
in cooperation with County of Mahoning  
Revised in cooperation with State of Ohio agencies  
Control by USGS, USC&GS, and County of Mahoning  
Topography by photogrammetric methods from aerial photographs taken  
1950. Field checked 1951. Revised by photogrammetric methods from  
aerial photographs taken 1962. Field checked 1963  
Polyconic projection. 1927 North American datum  
10,000-foot grids based on Ohio coordinate system, north zone and  
Pennsylvania coordinate system, south zone  
1000-meter Universal Transverse Mercator grid ticks,  
zone 17, shown in blue  
Land lines within the Connecticut Western Reserve established by private  
subdivision. Land lines within Congress Lands North of the Old Seven  
Ranges based on the Ohio River Base  
Map photinspected 1988  
No major culture or drainage changes observed

Areas bounded by dashed purple lines  
and printed with disturbed surface pattern  
represent reclaimed mining areas



THIS MAP COMPLIES WITH NATIONAL MAP ACCURACY STANDARDS  
FOR SALE BY U.S. GEOLOGICAL SURVEY  
DENVER, COLORADO 80225, OR RESTON, VIRGINIA 22092  
A FOLDER DESCRIBING TOPOGRAPHIC MAPS AND SYMBOLS IS AVAILABLE ON REQUEST

The difference between 1927 North American Datum and North  
American Datum of 1983 (NAD 83) for 7.5-minute intersections  
is given in USGS Bulletin 1875. The NAD 83 is shown by  
dashed corner ticks  
Revisions shown in purple compiled in cooperation with  
State of Ohio agencies from aerial photographs taken  
1976. Map edited 1978. This information not field checked

ROAD CLASSIFICATION  
Heavy-duty ——— Light-duty ———  
Medium-duty ——— Unimproved dirt ———  
Interstate Route ——— State Route ———

NEW MIDDLETOWN, OHIO—PA.  
40080-HF-024  
PHOTOINSPECTED 1988  
1963  
PHOTOREVISED 1978  
DMA 4865 1 NE—SERIES V852

