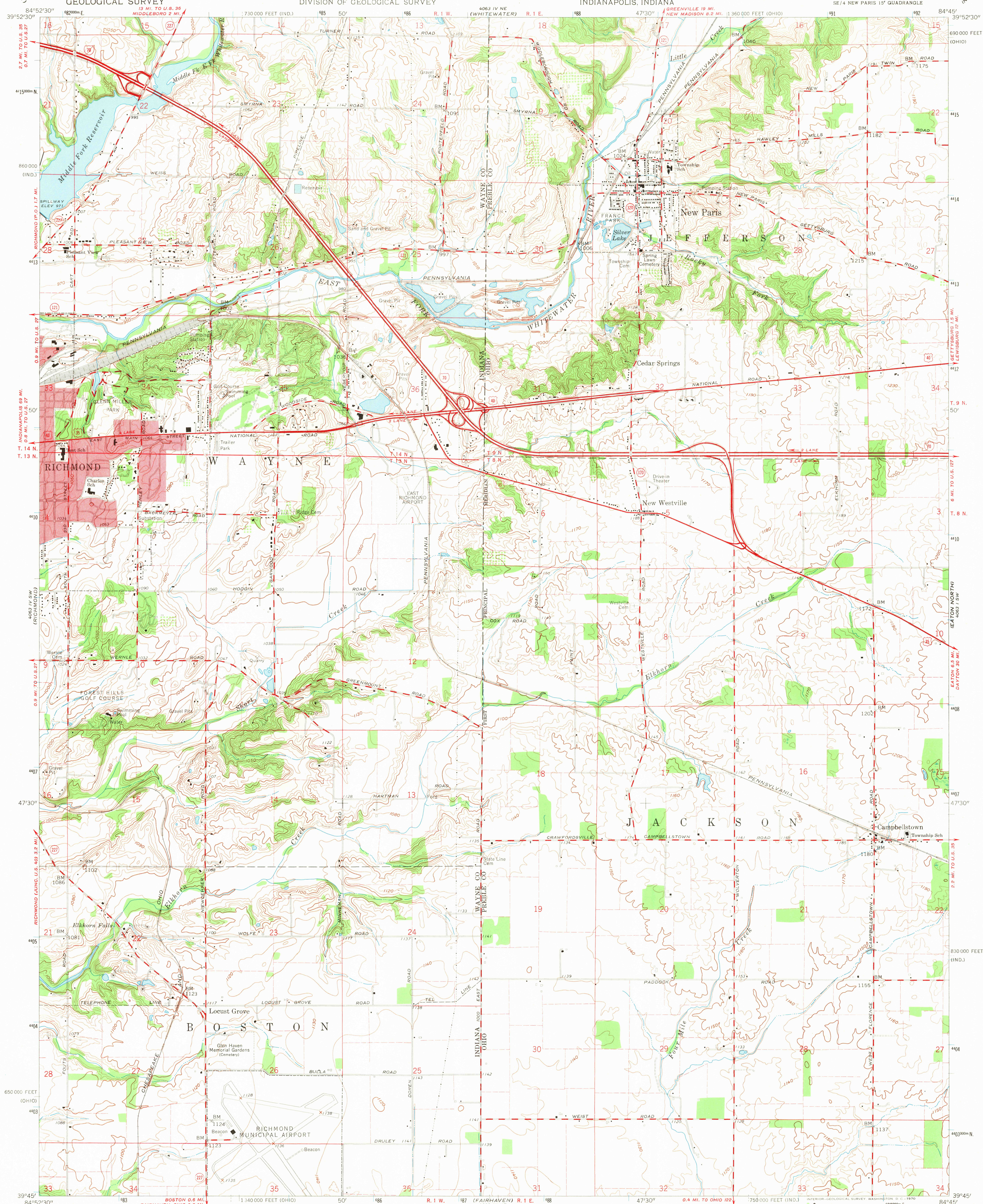


UNITED STATES  
DEPARTMENT OF THE INTERIOR  
GEOLOGICAL SURVEY

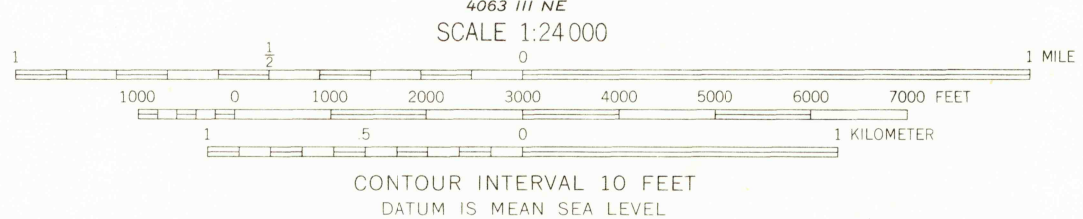
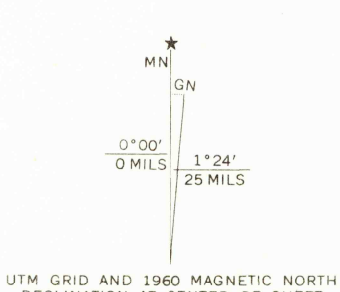
STATE OF OHIO  
DEPARTMENT OF HIGHWAYS  
DEPARTMENT OF NATURAL RESOURCES  
DIVISION OF GEOLOGICAL SURVEY

STATE OF INDIANA  
INDIANA DEPARTMENT OF CONSERVATION  
INDIANAPOLIS, INDIANA

NEW PARIS QUADRANGLE  
OHIO-INDIANA  
7.5 MINUTE SERIES (TOPOGRAPHIC)  
SE 1/4 NEW PARIS 15' QUADRANGLE



Mapped, edited, and published by the Geological Survey  
Control by USGS and USCGS  
Topography from aerial photographs by photogrammetric methods  
Aerial photographs taken 1958. Field check 1960  
Polyconic projection. 1927 North American datum  
10,000-foot grids based on Ohio coordinate system, south zone,  
and Indiana coordinate system, east zone  
1000-meter Universal Transverse Mercator grid ticks,  
zone 16, shown in blue  
Fine red dashed lines indicate selected fence and field lines where  
generally visible on aerial photographs. This information is unchecked  
Red tint indicates area in which only landmark buildings are shown  
Land lines in Ohio based on the Great Miami River Base  
Ohio portion lies within the Miami River Survey



THIS MAP COMPLIES WITH NATIONAL MAP ACCURACY STANDARDS  
FOR SALE BY U. S. GEOLOGICAL SURVEY, WASHINGTON, D. C. 20242  
AND INDIANA DEPARTMENT OF NATURAL RESOURCES, INDIANAPOLIS, INDIANA 46204  
A FOLDER DESCRIBING TOPOGRAPHIC MAPS AND SYMBOLS IS AVAILABLE ON REQUEST



ROAD CLASSIFICATION	
Heavy duty	Light-duty
Medium-duty	Unimproved dirt
Interstate Route	U.S. Route
	State Route

NEW PARIS, OHIO-IND.  
SE 1/4 NEW PARIS 15' QUADRANGLE  
N3945-W8445/7.5

1960

AMS 4063 IV SE-SERIES V852

2610  
DEC 11 1969