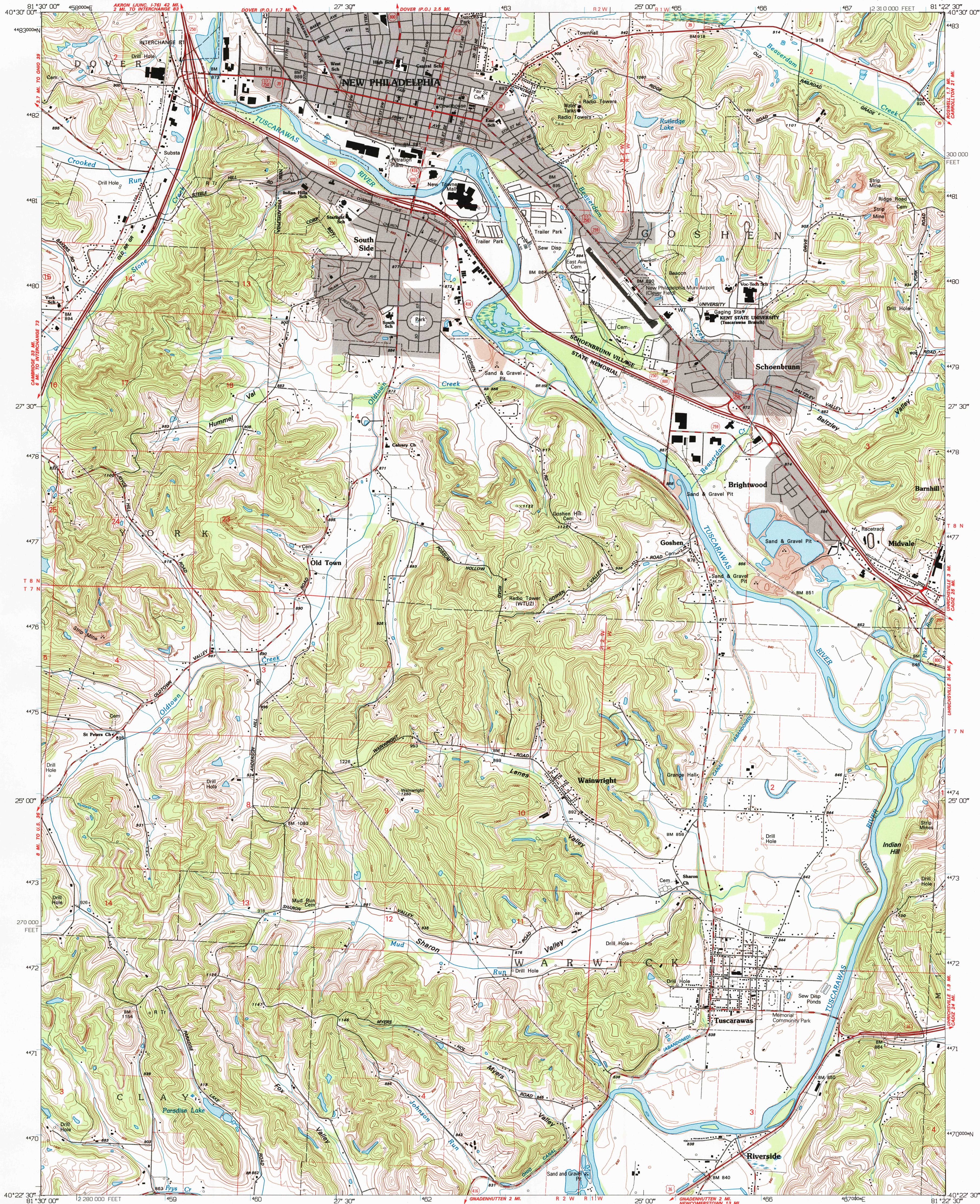


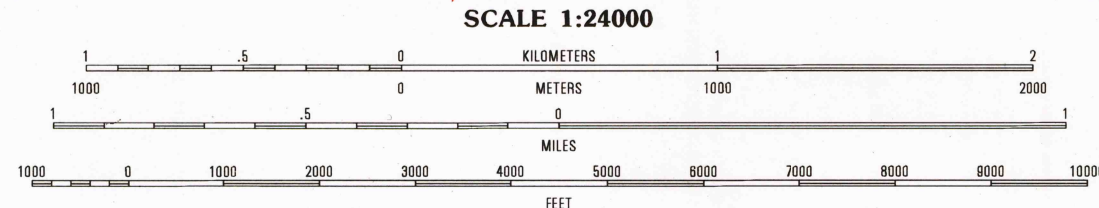
UNITED STATES
DEPARTMENT OF THE INTERIOR
GEOLOGICAL SURVEY

NEW PHILADELPHIA QUADRANGLE
OHIO-TUSCARAWAS CO.
7.5 MINUTE SERIES (TOPOGRAPHIC)



Produced by the United States Geological Survey
in cooperation with State of Ohio agencies
Control by USGS and NOS/NOAA
Topography by photogrammetric methods from aerial photographs
taken 1960. Field checked 1962. Revised from aerial photographs
taken 1991. Field checked 1992. Map edited 1993
Universal Transverse Mercator projection
10,000-foot grid ticks: Ohio coordinate system, north zone
1000-meter Universal Transverse Mercator grid ticks, zone 17, shown in blue
1927 North American Datum (NAD 27)
North American Datum of 1983 (NAD 83) is shown by dashed corner ticks
The values of the shift between NAD 27 and NAD 83 for 7.5-minute
intersections are given in USGS Bulletin 1875
There may be private inholdings within the boundaries of
the National or State reservations shown on this map
Unlabeled wells are gas wells
Entire area lies within the United States Military District
Land lines based on the Base Line of the United States Military District
Gray tint indicates areas in which only landmark buildings are shown
Fine red dashed lines indicate selected fence and field lines where
generally visible on aerial photographs. This information is unchecked

UTM GRID AND 1983 MAGNETIC NORTH
DECLINATION AT CENTER OF SHEET



CONTOUR INTERVAL 20 FEET
SUPPLEMENTARY CONTOUR INTERVAL 10 FEET
NATIONAL GEODETIC VERTICAL DATUM OF 1929

THIS MAP COMPLIES WITH NATIONAL MAP ACCURACY STANDARDS
FOR SALE BY U.S. GEOLOGICAL SURVEY
DENVER, COLORADO 80225 OR RESTON, VIRGINIA 22092
A FOLDER DESCRIBING TOPOGRAPHIC MAPS AND SYMBOLS IS AVAILABLE ON REQUEST

ROAD CLASSIFICATION
Primary highway
hard surface
Secondary highway
hard surface
Unimproved road
Light-duty road, hard or
improved surface
Unimproved road
Interstate Route
U.S. Route
State Route

QUADRANGLE LOCATION

1	2	3
4	5	6
7	8	9

1 Strasburg
2 Dover
3 Mineral City
4 Stone Creek
5 Uhrichsville
6 Newcomerstown
7 Gnadenshuten
8 Tipppecanoe

NEW PHILADELPHIA, OHIO
40081-D4-TF-024
1993
DMA 4764 IV NW - SERIES V852

USGS HISTORICAL
MAP ARCHIVES
SEP 09 1994
REC'D FILE COPY