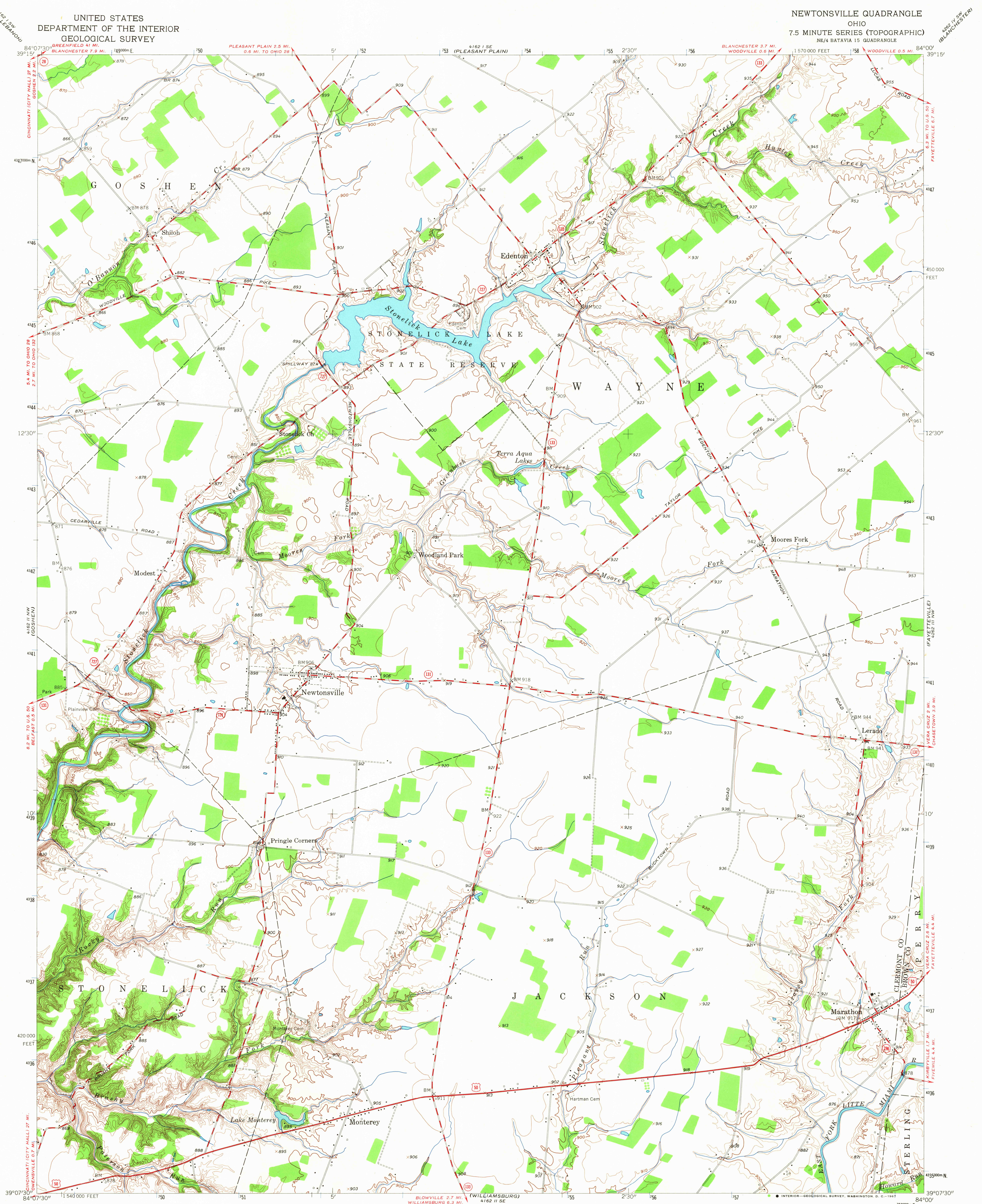


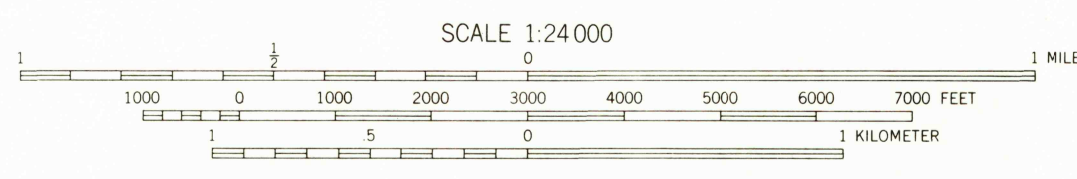
UNITED STATES
DEPARTMENT OF THE INTERIOR
GEOLOGICAL SURVEY

NEWTONSVILLE QUADRANGLE
OHIO
7.5 MINUTE SERIES (TOPOGRAPHIC)
NE/4 BATAVIA 15 QUADRANGLE



Mapped, edited, and published by the Geological Survey
Control by USGS and USC&GS
Topography from aerial photographs by Kelsh plotter
Aerial photographs taken 1952. Field check 1953
Polyconic projection. 1927 North American datum
10,000-foot grid based on Ohio coordinate system,
south zone
1000-meter Universal Transverse Mercator grid ticks,
zone 16, shown in blue

UTM GRID AND 1953 MAGNETIC NORTH
DECLINATION AT CENTER OF SHEET



CONTOUR INTERVAL 10 FEET
DATUM IS MEAN SEA LEVEL

THIS MAP COMPLIES WITH NATIONAL MAP ACCURACY STANDARDS
FOR SALE BY U. S. GEOLOGICAL SURVEY, WASHINGTON, D. C. 20242
A FOLDER DESCRIBING TOPOGRAPHIC MAPS AND SYMBOLS IS AVAILABLE ON REQUEST

USGS
Historical File
Topographic Division

ROAD CLASSIFICATION
Heavy-duty 4 LANE 6 LANE Light-duty
Medium-duty 4 LANE 6 LANE Unimproved dirt
U. S. Route State Route

NEWTONSVILLE, OHIO
NE/4 BATAVIA 15 QUADRANGLE
N3907.5-W8400/7.5
1953
AMS 4162 II NE-SERIES V852

3105
OCT 11 1967