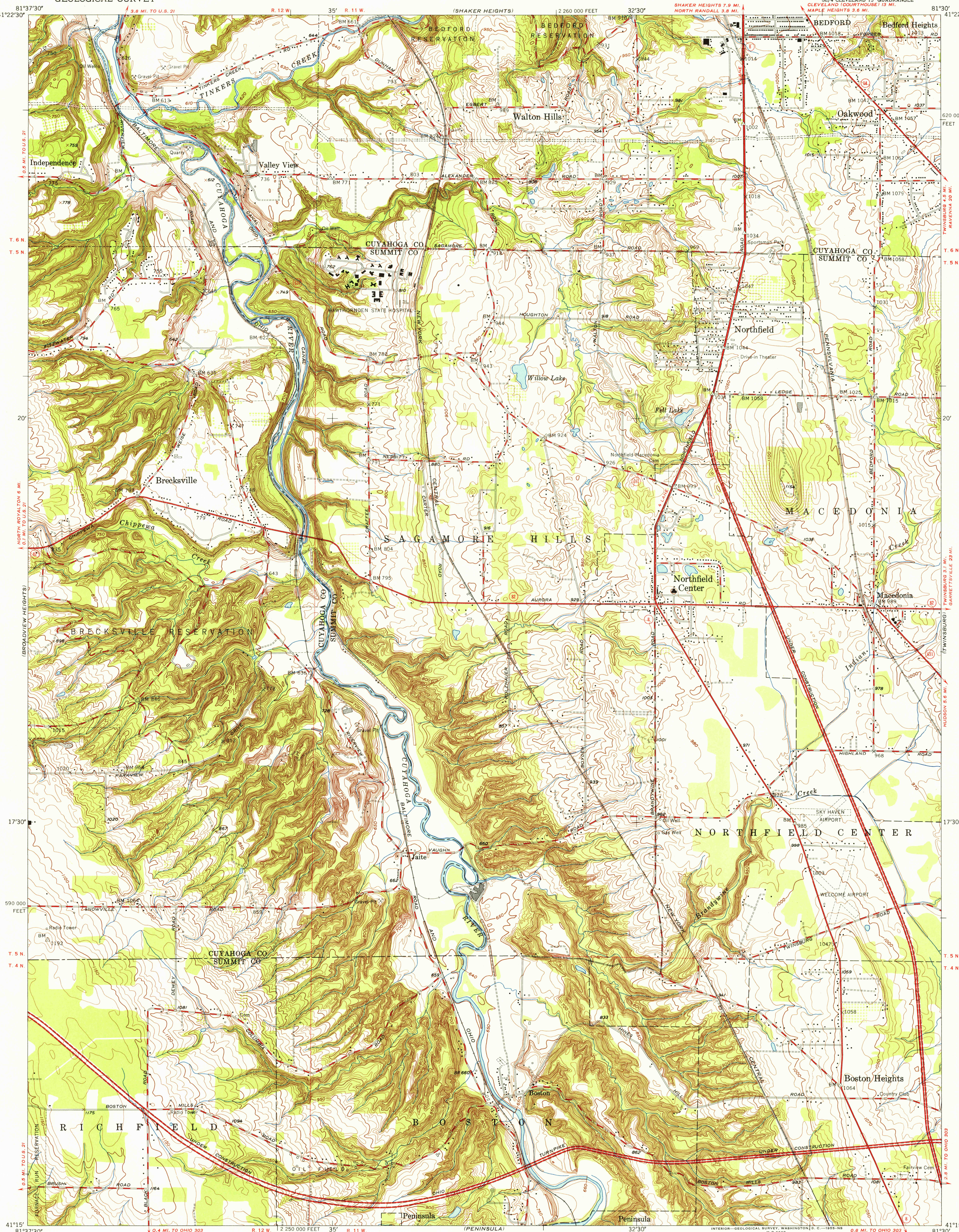


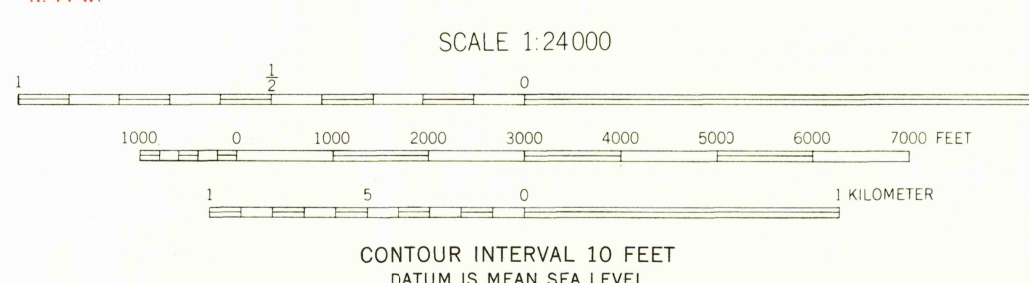
UNITED STATES  
DEPARTMENT OF THE INTERIOR  
GEOLOGICAL SURVEY

NORTHFIELD QUADRANGLE  
OHIO  
7.5 MINUTE SERIES (TOPOGRAPHIC)

U.S.G.S.  
FILE COPY  
TOPOGRAPHIC DIVISION



Mapped, edited, and published by the Geological Survey  
Control by USGS, USC&GS, and Cleveland Regional Geodetic Survey  
Topography by Kelsh plotter from aerial photographs  
taken 1949 and in part by Cleveland Regional Geodetic Survey  
Field check 1953  
Polyconic projection. 1927 North American datum  
10,000-foot grid based on Ohio coordinate system,  
north zone  
Entire area lies within the Connecticut Western Reserve  
Land lines were established by the Connecticut Land Company



USGS  
Historical File  
Topographic Division

ROAD CLASSIFICATION  
Heavy-duty 4 LANE 16 LANE Light-duty  
Medium-duty 4 LANE 16 LANE Unimproved dirt  
U.S. Route State Route

U.S.G.S.  
FILE COPY  
TOPOGRAPHIC DIVISION

NORTHFIELD, OHIO  
SE/4 CLEVELAND 15' QUADRANGLE  
N4115-W8130/7.5

1953

MAY 9 1955

THIS MAP COMPLIES WITH NATIONAL MAP ACCURACY STANDARDS  
FOR SALE BY U. S. GEOLOGICAL SURVEY, WASHINGTON, 25, D. C.  
A FOLDER DESCRIBING TOPOGRAPHIC MAPS AND SYMBOLS IS AVAILABLE ON REQUEST