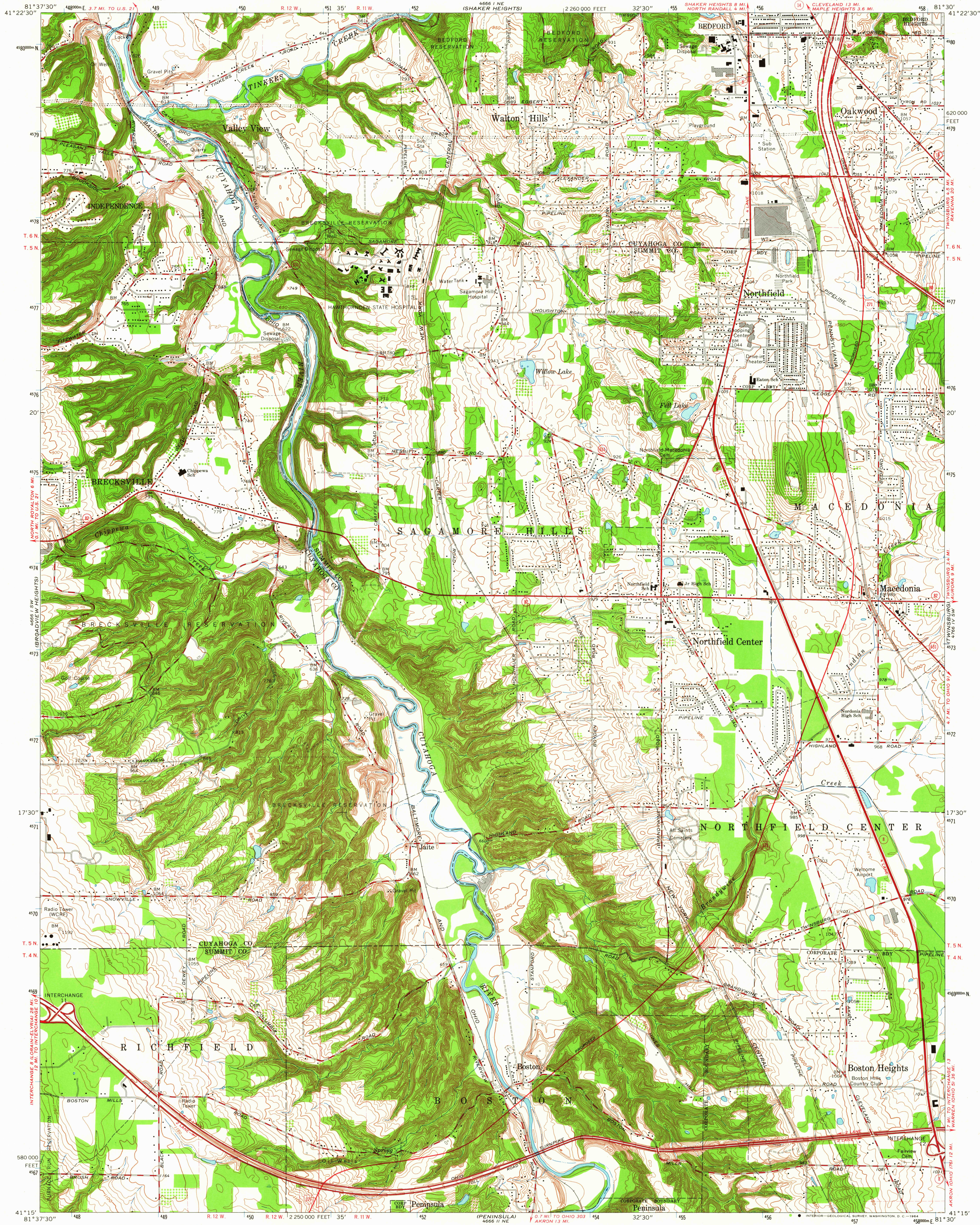
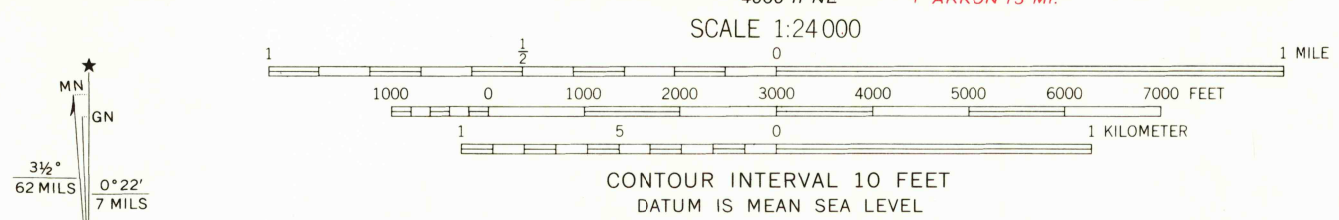


UNITED STATES
DEPARTMENT OF THE INTERIOR
GEOLOGICAL SURVEY

NORTHFIELD QUADRANGLE
OHIO
7.5 MINUTE SERIES (TOPOGRAPHIC)



Mapped, edited, and published by the Geological Survey
Revised in cooperation with State of Ohio agencies
Control by USGS, USC&GS, and Cleveland Regional Geodetic Survey
Topography by photogrammetric methods from aerial photographs
taken 1949, and by Cleveland Regional Geodetic Survey. Field checked 1953
Revised from aerial photographs taken 1962. Field checked 1963
Polyconic projection. 1927 North American datum
10,000-foot grid based on Ohio coordinate system, north zone
1000-meter Universal Transverse Mercator grid ticks,
zone 17, shown in blue
Fine red dashed lines indicate selected fence and field lines where
generally visible on aerial photographs. This information is unchecked
Entire area lies within the Connecticut Western Reserve
Dotted land lines established by private subdivision of the
Connecticut Western Reserve



USGS
Historical File
Topographic Division

ROAD CLASSIFICATION
Heavy-duty ——— Light-duty ———
Medium-duty ——— Unimproved dirt ———
○ Interstate Route ○ State Route

NORTHFIELD, OHIO
SE/4 CLEVELAND 15' QUADRANGLE
N4115—W8130/7.5

1963
AMS 4661 1 SE—SERIES V852

U.S.G.S.
FILE COPY
TOPOGRAPHIC DIVISION

OCT 4 1964