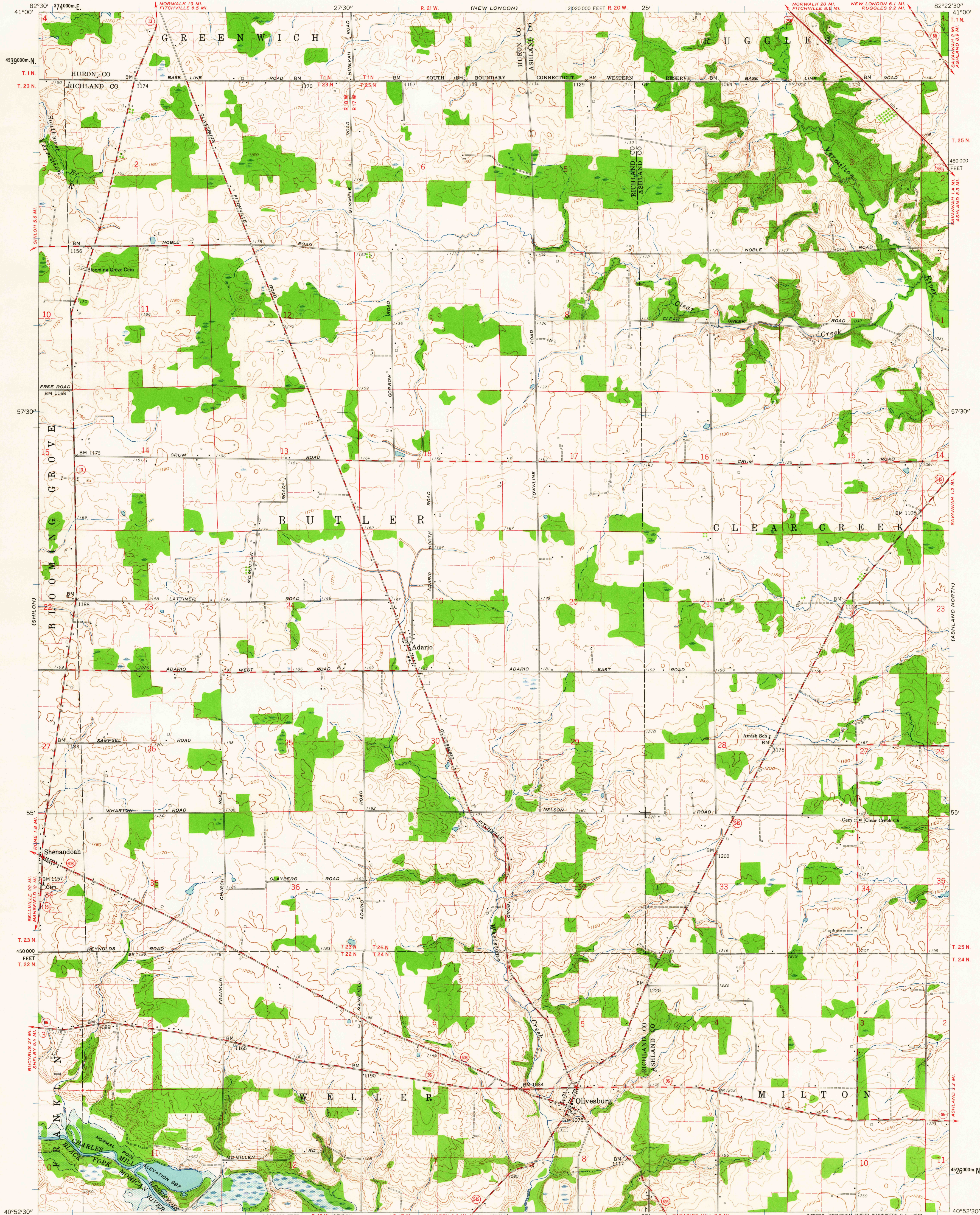


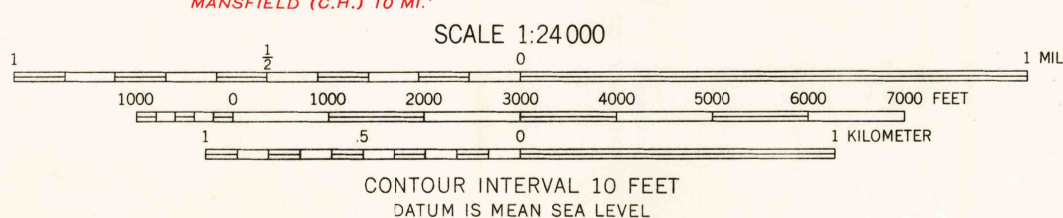
UNITED STATES  
DEPARTMENT OF THE INTERIOR  
GEOLOGICAL SURVEY

STATE OF OHIO  
DEPARTMENT OF HIGHWAYS  
DEPARTMENT OF NATURAL RESOURCES  
DIVISION OF GEOLOGICAL SURVEY

OLIVESBURG QUADRANGLE  
OHIO  
7.5 MINUTE SERIES (TOPOGRAPHIC)



Mapped, edited, and published by the Geological Survey  
Control by USGS and USC&GS  
Topography from aerial photographs by photogrammetric methods  
Aerial photographs taken 1959. Field check 1960  
Polyconic projection. 1927 North American datum  
10,000-foot grid based on Ohio coordinate system, north zone  
1000-meter Universal Transverse Mercator grid ticks,  
zone 17, shown in blue  
Land lines within Congress Lands north of old Seven Ranges  
based on Ohio River Base. Dotted land lines within  
Connecticut Western Reserve established by private subdivision  
Areas covered by dashed light-blue pattern are subject  
to controlled inundation to 1020 feet.  
Fine red dashed lines indicate selected fence and field lines where  
generally visible on aerial photographs. This information is unchecked



USGS  
Historical File  
Topographic Division

ROAD CLASSIFICATION  
Heavy-duty ——— Light-duty ———  
Medium-duty ——— Unimproved dirt ———  
U.S. Route ——— State Route ———



OLIVESBURG, OHIO  
NW 1/4 ASHLAND 15' QUADRANGLE  
N 4052.5-W 8222.5/7.5  
1960  
U.S.G.S.  
FILE COPY  
TOPOGRAPHIC DIVISION

MAR 22 1962

1880