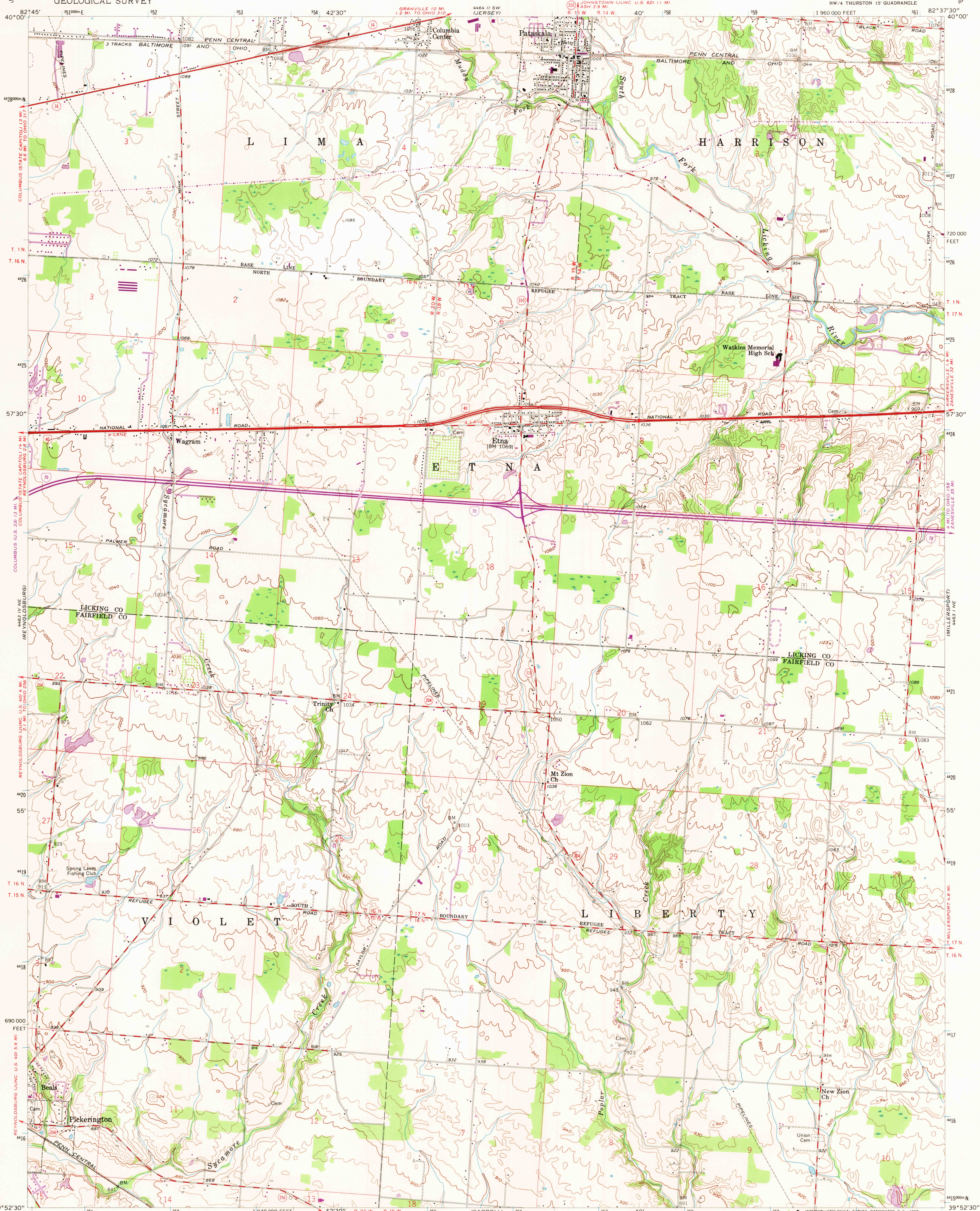


UNITED STATES
DEPARTMENT OF THE INTERIOR
GEOLOGICAL SURVEY

PATASKALA QUADRANGLE
OHIO
7.5 MINUTE SERIES (TOPOGRAPHIC)
NW/4 THURSTON 15' QUADRANGLE



Mapped, edited, and published by the Geological Survey

Control by USGS and USC&GS

Topography from aerial photographs by Kelsh plotter
Aerial photographs taken 1955. Field check 1958

Polyconic projection. 1927 North American datum
10,000-foot grid based on Ohio coordinate system,
south zone

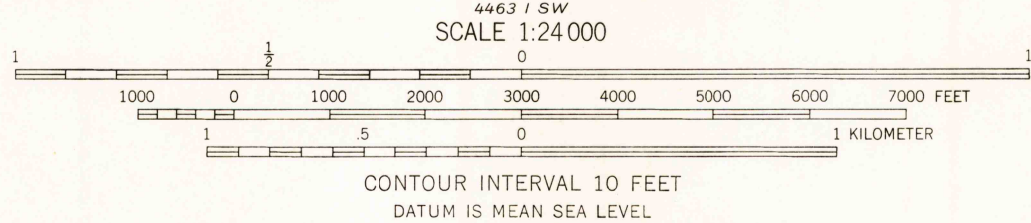
1000-meter Universal Transverse Mercator grid ticks,
zone 17, shown in blue

Land lines south of the Base Line based on the
Ohio River Base. Area north of the Base Line lies
within the United States Military District

Unchecked elevations are shown in brown

Revisions shown in purple compiled from aerial photographs
taken 1967. This information not field checked

UTM GRID AND 1967 MAGNETIC NORTH
DECLINATION AT CENTER OF SHEET



THIS MAP COMPLIES WITH NATIONAL MAP ACCURACY STANDARDS

FOR SALE BY U.S. GEOLOGICAL SURVEY, WASHINGTON, D.C. 20242

A FOLDER DESCRIBING TOPOGRAPHIC MAPS AND SYMBOLS IS AVAILABLE ON REQUEST

USGS
Historical File
Topographic Division



ROAD CLASSIFICATION
Heavy-duty ——— Light-duty ———
Medium-duty ——— Unimproved dirt ———
○ Interstate Route ○ U.S. Route ○ State Route

U.S.G.S.
FILE COPY
TOPOGRAPHIC DIVISION

PATASKALA, OHIO
NW/4 THURSTON 15' QUADRANGLE
N3952.5-W8237.5/7.5
1958
PHOTOREVISED 1967
AMS 4463 1 NW-SERIES V852

2755
DEC 17 1968