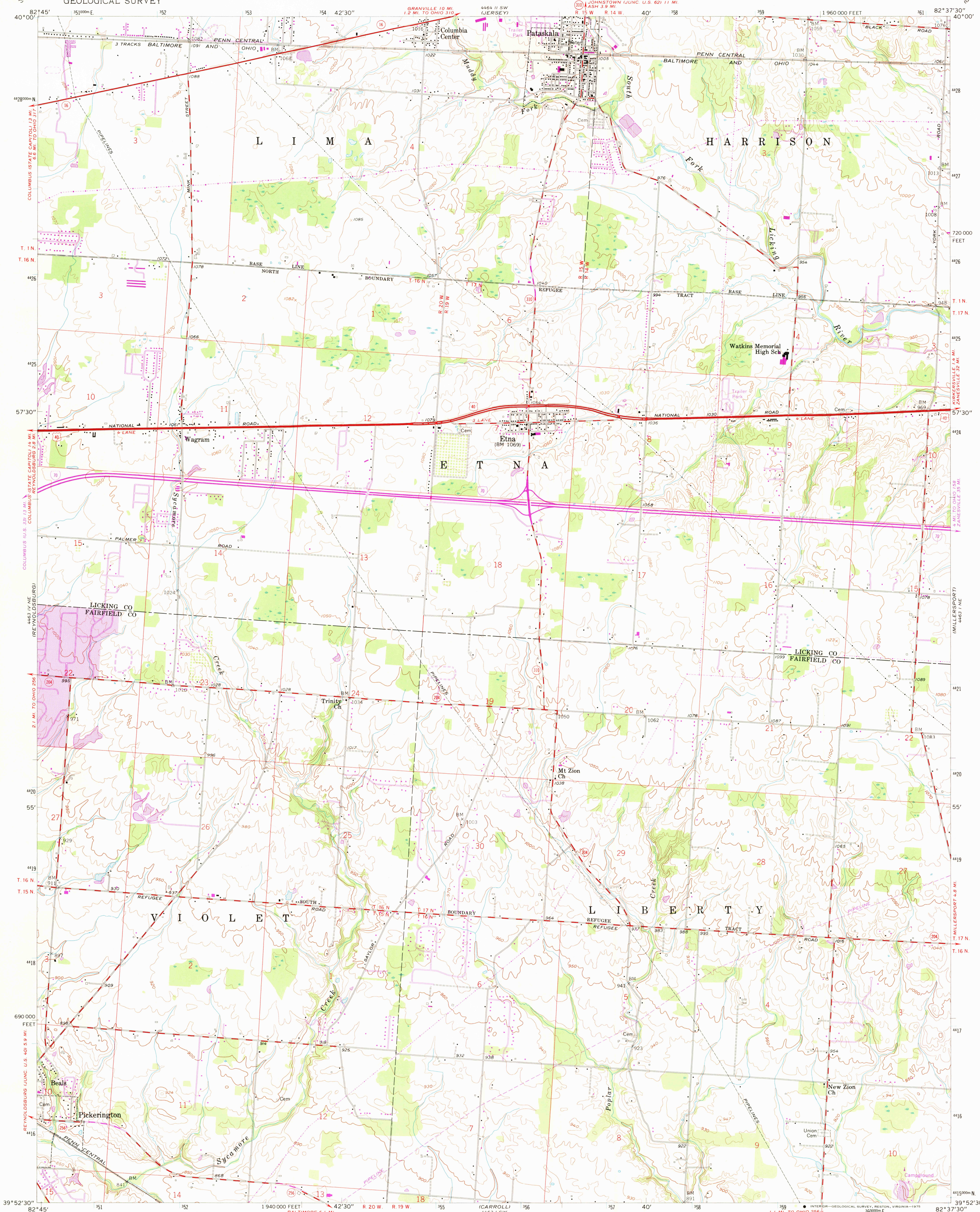


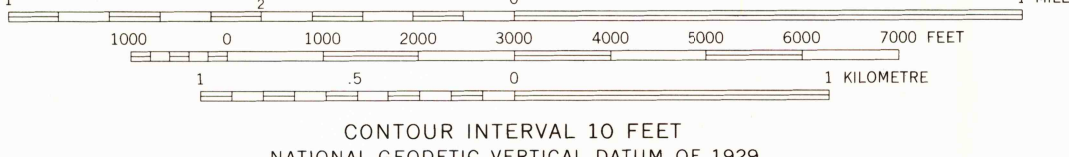
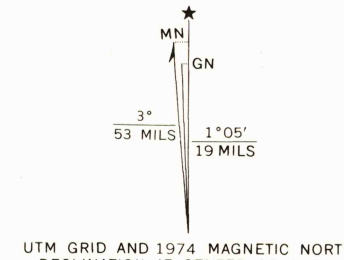
UNITED STATES
DEPARTMENT OF THE INTERIOR
GEOLOGICAL SURVEY

PATASKALA QUADRANGLE
OHIO
7.5 MINUTE SERIES (TOPOGRAPHIC)



Mapped, edited, and published by the Geological Survey

Control by USGS and NOS/NOAA
Topography from aerial photographs by Kelsh plotter
Aerial photographs taken 1955. Field check 1958
Polyconic projection. 1927 North American datum
10,000-foot grid based on Ohio coordinate system,
south zone
1000-metre Universal Transverse Mercator grid ticks,
zone 17, shown in blue
Land lines south of the Base Line based on the
Ohio River Base. Area north of the Base Line lies
within the United States Military District
Unchecked elevations are shown in brown



ROAD CLASSIFICATION	
Heavy-duty	Light-duty
Medium-duty	Unimproved dirt
Interstate Route	U.S. Route
	State Route

USGS
Historical File
Topographic Division
PATASKALA, OHIO
N3952.5—W8237.5/7.5
1958
PHOTOREVISED 1967 AND 1974
AMS 4463 I NW—SERIES Y852

THIS MAP COMPLIES WITH NATIONAL MAP ACCURACY STANDARDS
FOR SALE BY U.S. GEOLOGICAL SURVEY, RESTON, VIRGINIA 22092
A FOLDER DESCRIBING TOPOGRAPHIC MAPS AND SYMBOLS IS AVAILABLE ON REQUEST

Revisions shown in purple compiled in cooperation with
State of Ohio agencies from aerial photographs taken
1967 and 1974. This information not field checked.
Purple tint indicates extension of urban areas

APR 17 1975