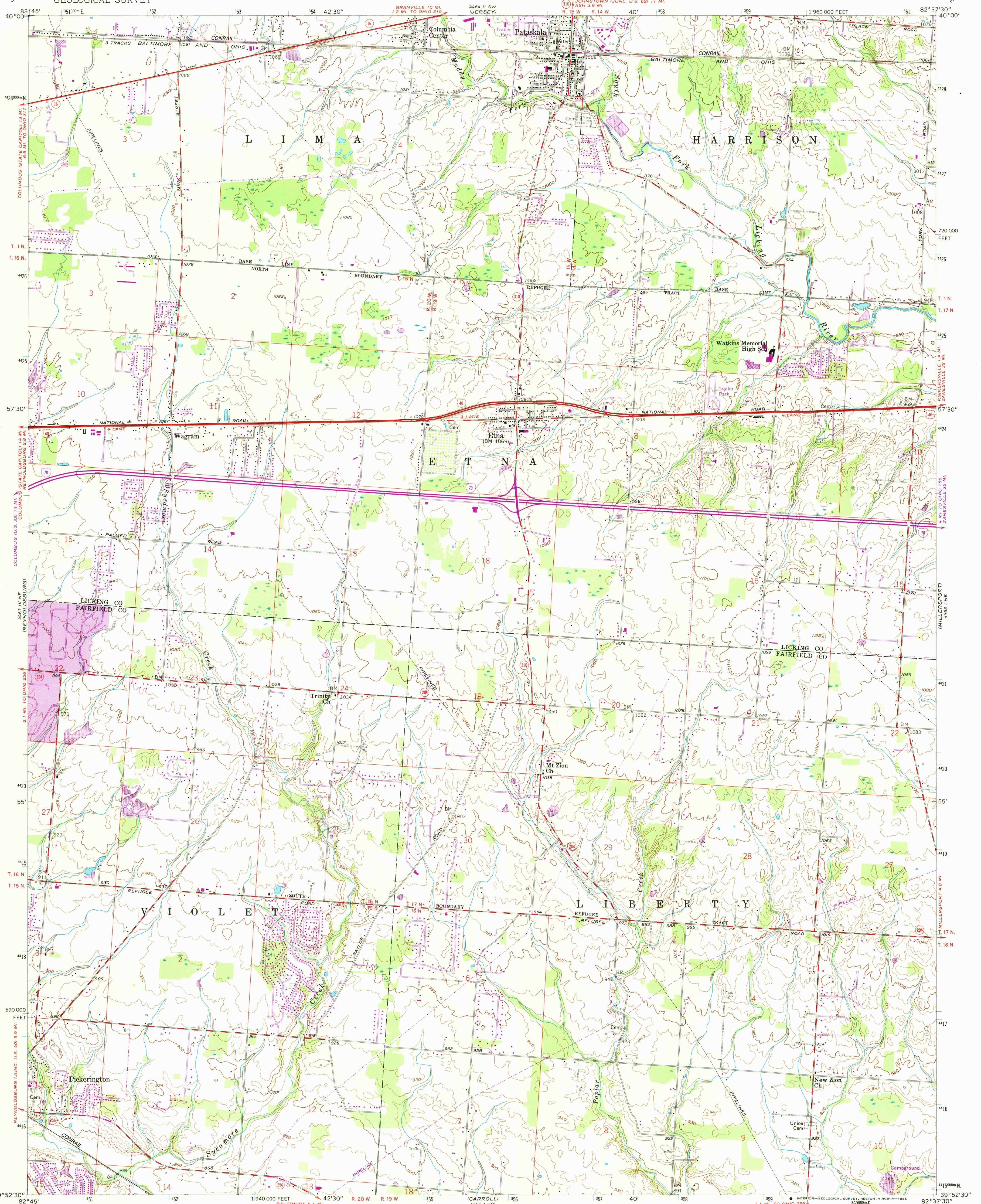


UNITED STATES  
DEPARTMENT OF THE INTERIOR  
GEOLOGICAL SURVEY

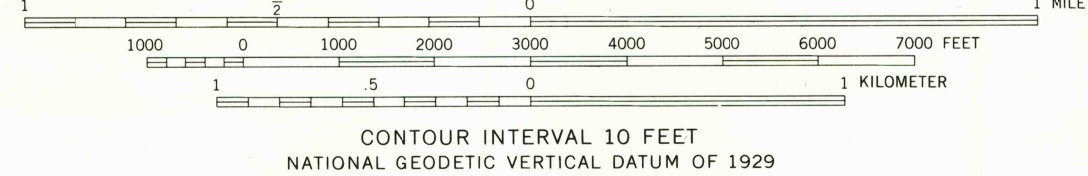
PATASKALA QUADRANGLE  
OHIO  
7.5 MINUTE SERIES (TOPOGRAPHIC)



Mapped, edited, and published by the Geological Survey

Control by USGS and NOS/NOAA  
Topography from aerial photographs by Kelsh plotter  
Aerial photographs taken 1955. Field check 1958  
Polyconic projection. 1927 North American datum  
10,000-foot grid based on Ohio coordinate system,  
south zone  
1000-meter Universal Transverse Mercator grid ticks,  
zone 17, shown in blue  
Land lines south of the Base Line based on the  
Ohio River Base. Area north of the Base Line lies  
within the United States Military District  
Unchecked elevations are shown in brown  
To place on the predicted North American Datum 1983,  
move the projection lines 3 meters south and  
10 meters west as shown by dashed corner ticks

UTM GRID AND 1983 MAGNETIC NORTH  
DECLINATION AT CENTER OF SHEET



THIS MAP COMPLIES WITH NATIONAL MAP ACCURACY STANDARDS  
FOR SALE BY U. S. GEOLOGICAL SURVEY, RESTON, VIRGINIA 22092  
A FOLDER DESCRIBING TOPOGRAPHIC MAPS AND SYMBOLS IS AVAILABLE ON REQUEST

Revisions shown in purple compiled in cooperation with  
State of Ohio agencies from aerial photographs taken  
1983. This information not field checked. Map edited 1985  
Purple tint indicates extension of urban areas

ROAD CLASSIFICATION  
Heavy-duty ——— Light-duty ———  
Medium-duty ——— Unimproved dirt ———  
Interstate Route U. S. Route State Route

PATASKALA, OHIO

39082-H6-TF-024  
1958  
PHOTOREVISED 1985  
DMA 4463 1 NW—SERIES V852

RETURN TO:  
USGS AND HISTORICAL MAP ARCHIVES