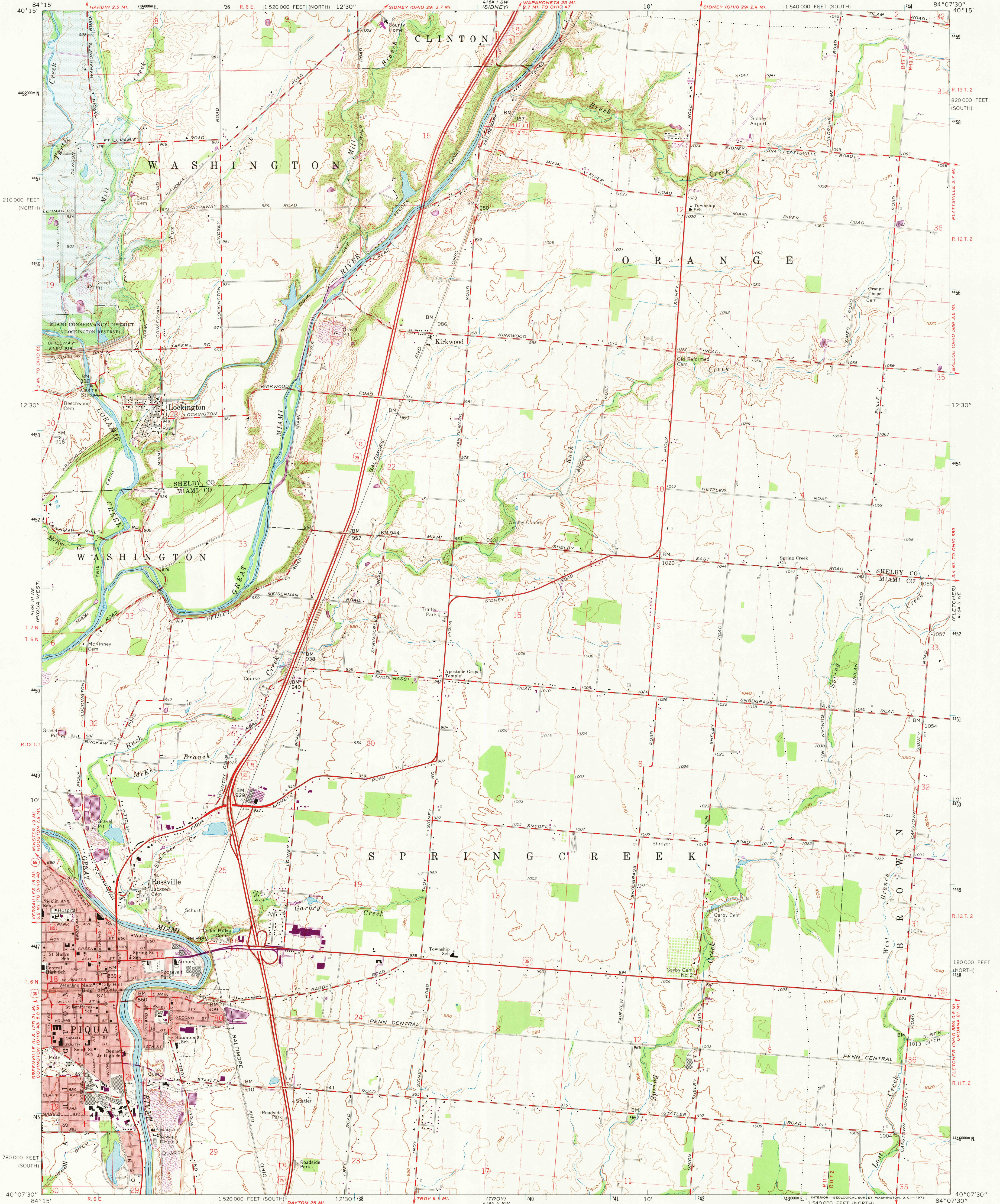


UNITED STATES
DEPARTMENT OF THE INTERIOR
GEOLOGICAL SURVEY

STATE OF OHIO
DEPARTMENT OF HIGHWAYS
DEPARTMENT OF NATURAL RESOURCES
DIVISION OF GEOLOGICAL SURVEY

PIQUA EAST QUADRANGLE
OHIO
7.5 MINUTE SERIES (TOPOGRAPHIC)



Mapped, edited, and published by the Geological Survey
Control by USGS and USCGS
Topography by photogrammetric methods from aerial
photographs taken 1959. Field checked 1961.
Polyconic projection. 1927 North American datum.
10,000-foot grids based on Ohio coordinate system, south and north zones
1000-meter Universal Transverse Mercator grid ticks, zone 16, shown in blue
Fine red dashed lines indicate selected fence and field lines where
generally visible on aerial photographs. This information is unchecked
Red tint indicates areas in which only landmark buildings are shown
Area covered by dashed light-blue pattern is subject to
controlled inundation to 938 feet
Area east of the Miami River lies within the Between the Miamis
Area west of the Miami River lies within the Miami River Survey
Land lines based on the Great Miami River Base

UTM GRID AND 1972 MAGNETIC NORTH
DECLINATION AT CENTER OF SHEET

SCALE 1:24,000
CONTOUR INTERVAL 10 FEET
DATUM IS MEAN SEA LEVEL

THIS MAP COMPLIES WITH NATIONAL MAP ACCURACY STANDARDS
FOR SALE BY U.S. GEOLOGICAL SURVEY, WASHINGTON, D.C. 20242
A FOLDER DESCRIBING TOPOGRAPHIC MAPS AND SYMBOLS IS AVAILABLE ON REQUEST

USGS
Historical File
Topographic Division

ROAD CLASSIFICATION
Heavy-duty ——— Light-duty ———
Medium-duty ——— Unimproved dirt ———
Interstate Route U.S. Route State Route



AUG 2 1 1973
PIQUA EAST, OHIO

N4007.5—W8407.5/7.5

Revisions shown in purple compiled in cooperation with
State of Ohio agencies from aerial photographs taken
1972. This information not field checked

1961
PHOTOREVISED 1972
AMS 4164 II NW—SERIES V852