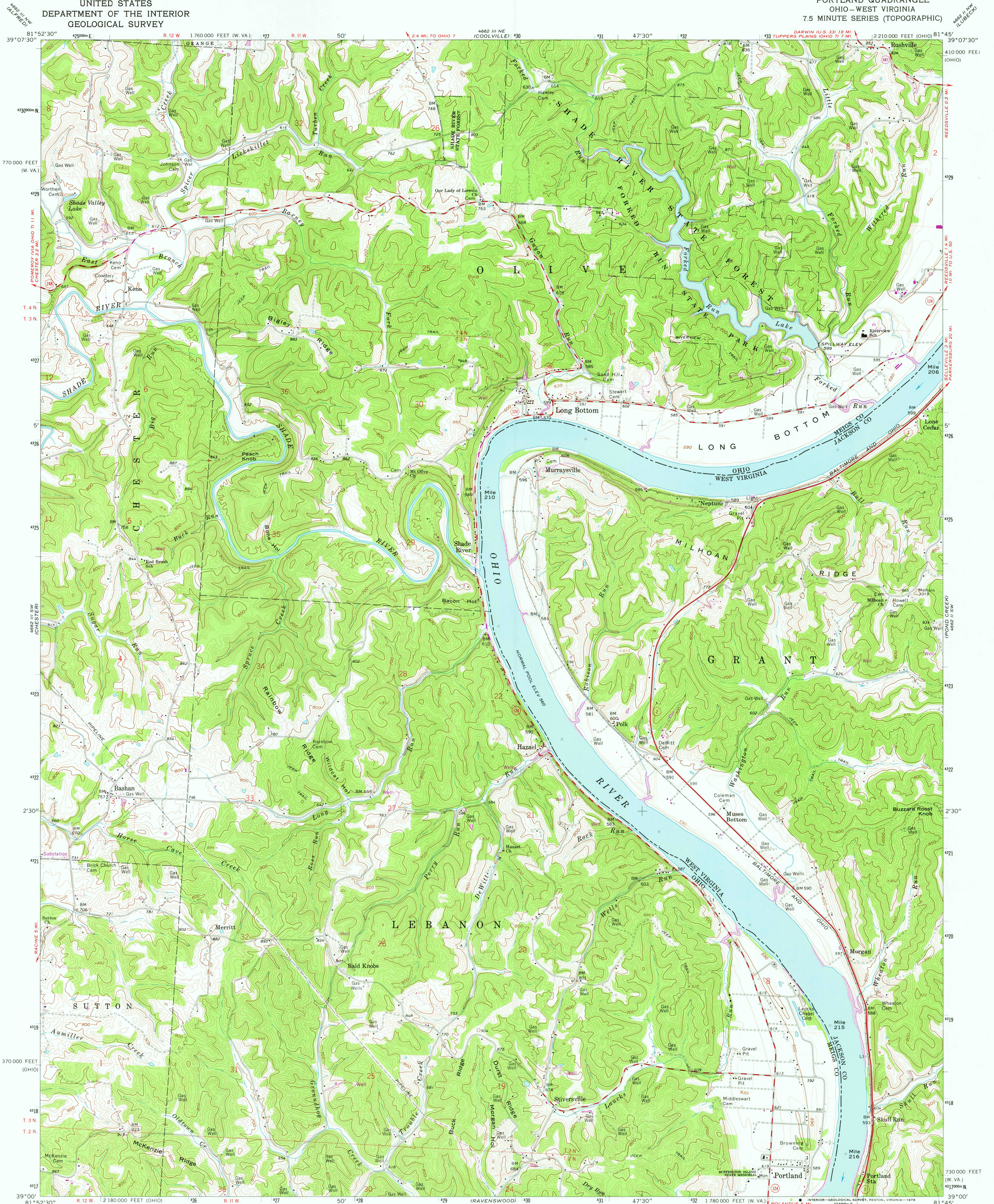


UNITED STATES
DEPARTMENT OF THE INTERIOR
GEOLOGICAL SURVEY

PORTLAND QUADRANGLE
OHIO—WEST VIRGINIA
7.5 MINUTE SERIES (TOPOGRAPHIC)



Mapped, edited, and published by the Geological Survey

Control by USGS, USC&GS, and USCE

Topography by photogrammetric methods from aerial photographs taken 1957. Field checked 1960

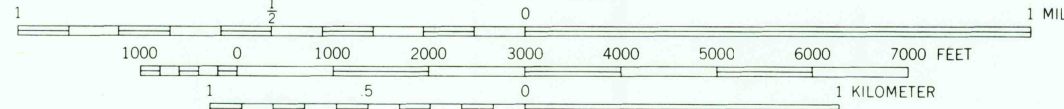
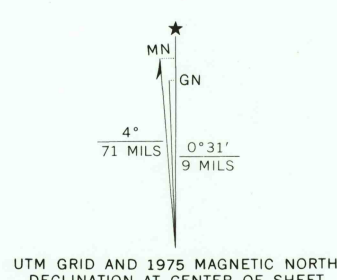
Polyconic projection. 1927 North American datum

10,000-foot grids based on Ohio coordinate system, south zone and West Virginia coordinate system, south zone, 1000 meter Universal Transverse Mercator grid ticks, zone 17, shown in blue

Fine red dashed lines indicate selected fence and field lines where generally visible on aerial photographs. This information is unchecked

The state line as shown represents the approximate position of the low water line as determined from U.S. Corps of Engineers Ohio River Charts, surveyed 1913, and supplementary information

Land lines based on the Ohio River Base. Dotted land lines established by private subdivision of the Ohio Company Purchase



CONTOUR INTERVAL 20 FEET
DOTTED LINES REPRESENT 10-FOOT CONTOURS
NATIONAL GEODETIC VERTICAL DATUM OF 1929

THIS MAP COMPLIES WITH NATIONAL MAP ACCURACY STANDARDS
FOR SALE BY U.S. GEOLOGICAL SURVEY, RESTON, VIRGINIA 22092
A FOLDER DESCRIBING TOPOGRAPHIC MAPS AND SYMBOLS IS AVAILABLE ON REQUEST



USGS
Historical File
Topographic Division

ROAD CLASSIFICATION
Heavy-duty ——— Light-duty ———
Medium-duty ——— Unimproved dirt ———
State Route ———

PORTLAND, OHIO—W. VA.

N3900—W8145/7.5

1960
PHOTOREVISED 1971 AND 1975
AMS 4662 III SE—SERIES V852

JUL 06 1978

3150

Revisions shown in purple compiled in cooperation with
States of Ohio and West Virginia agencies from aerial
photographs taken 1971 and 1975. This information
not field checked
Portions of Ohio-West Virginia boundary in dispute, not shown