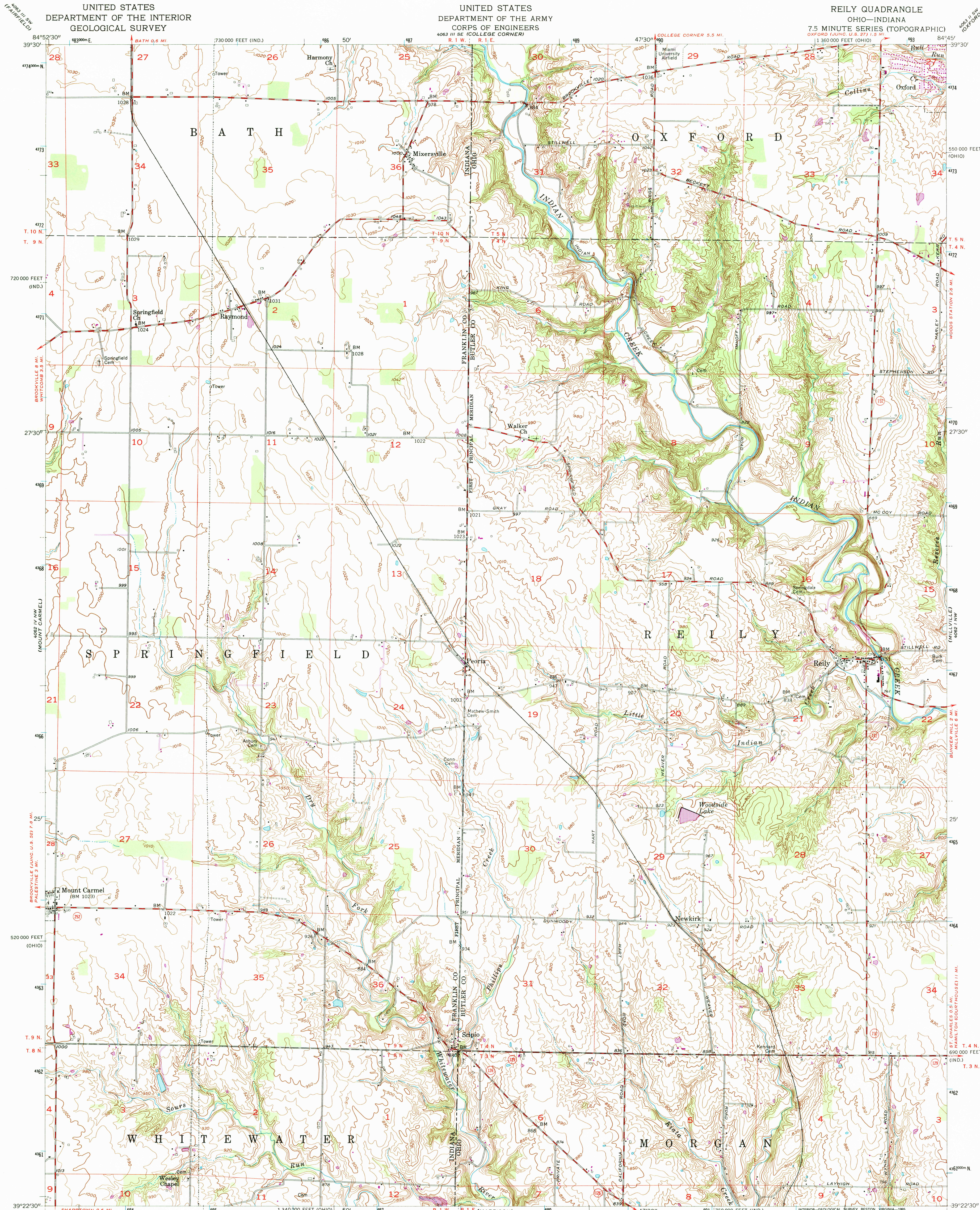


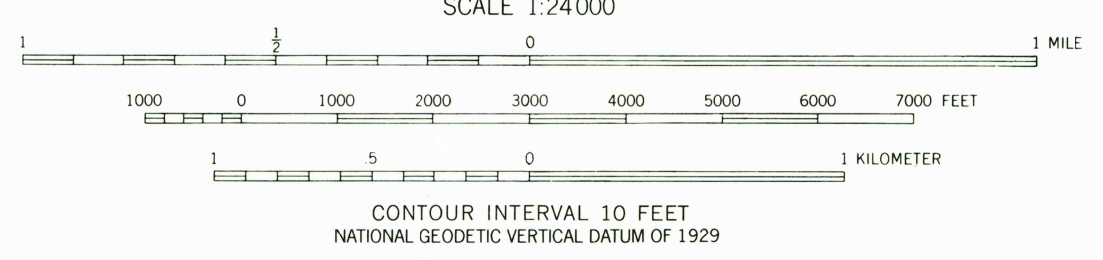
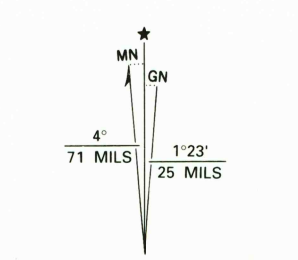
UNITED STATES
DEPARTMENT OF THE INTERIOR
GEOLOGICAL SURVEY

UNITED STATES
DEPARTMENT OF THE ARMY
CORPS OF ENGINEERS

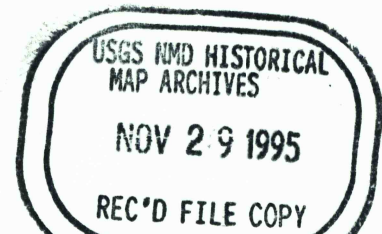
REILY QUADRANGLE
OHIO-INDIANA
7.5 MINUTE SERIES (TOPOGRAPHIC)



Produced by the U. S. Geological Survey
Compiled by photogrammetric methods from imagery dated 1954
Field checked 1955
Photorevised using imagery dated 1992; no major culture or drainage
changes observed. Boundaries and names revised 1995
North American Datum of 1927 (NAD 27)
Projection: Ohio coordinate system, south zone
(Lambert conformal conic)
10,000-foot ticks: Ohio coordinate system, south zone and
Indiana coordinate system, east zone
Blue 1000-meter Universal Transverse Mercator grid ticks, zone 16
North American Datum of 1983 (NAD 83) is shown by dashed
corner ticks. The values of the shift between NAD 27 and NAD 83
for 7.5-minute intersections are obtainable from National Geodetic
Survey NADCON software
Land lines in Ohio based on the Great Miami River Base
Revisions shown in purple compiled in cooperation with
State of Ohio agencies from aerial photographs taken
1970. This information not field checked



ROAD CLASSIFICATION	
Primary highway, hard surface	Light-duty road, hard or improved surface
Secondary highway, hard surface	Unimproved road
Interstate Route	U. S. Route
	State Route



REILY, OH-IN
39084-D7-TF-024
1992
DMA 4062 IV NE-SERIES V851

