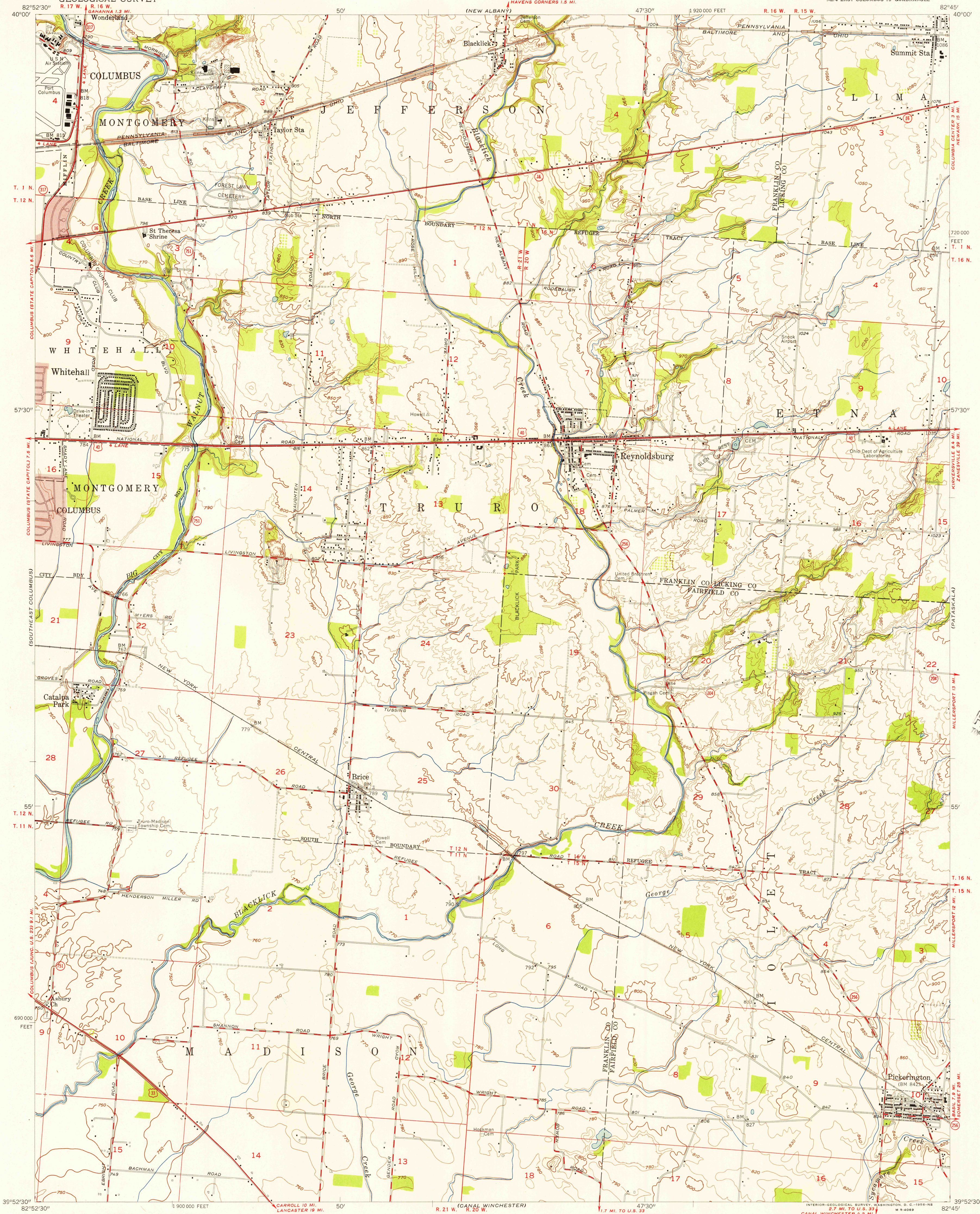


UNITED STATES  
DEPARTMENT OF THE INTERIOR  
GEOLOGICAL SURVEY

REYNOLDSBURG QUADRANGLE  
OHIO  
7.5 MINUTE SERIES (TOPOGRAPHIC)  
NE 1/4 EAST COLUMBUS 15' QUADRANGLE



U.S.G.S.  
FILE COPY  
TOPOGRAPHIC DIVISION

Mapped, edited, and published by the Geological Survey

Control by USGS, USC&GS, and City of Columbus

Topography from aerial photographs by photogrammetric methods and by plane-table surveys 1955

Aerial photographs taken 1953

Polyconic projection. 1927 North American datum

10,000-foot grid based on Ohio coordinate system, south zone

Land lines south of the Base Line based on the Ohio River Base

Area north of the Base Line lies within the U. S. Military District

Red tint indicates areas in which only landmark buildings are shown

APPROXIMATE MEAN  
DECLINATION, 1955

SCALE 1:24000  
1 000 0 1000 2000 3000 4000 5000 6000 7000 FEET  
1 5 10 KILOMETER

CONTOUR INTERVAL 10 FEET  
DATUM IS MEAN SEA LEVEL

THIS MAP COMPLIES WITH NATIONAL MAP ACCURACY STANDARDS  
FOR SALE BY U. S. GEOLOGICAL SURVEY, WASHINGTON 25, D. C.  
A FOLDER DESCRIBING TOPOGRAPHIC MAPS AND SYMBOLS IS AVAILABLE ON REQUEST

USGS  
Historical File  
Topographic Division



ROAD CLASSIFICATION  
Heavy-duty ——— Light-duty ———  
Medium-duty ——— Unimproved dirt ———  
U. S. Route ——— State Route ———

U.S.G.S.  
FILE COPY  
TOPOGRAPHIC DIVISION

REYNOLDSBURG, OHIO  
NE 1/4 EAST COLUMBUS 15' QUADRANGLE  
N 3952.5-W 8245.7/7.5

1955

DEC 12 1956

3149