

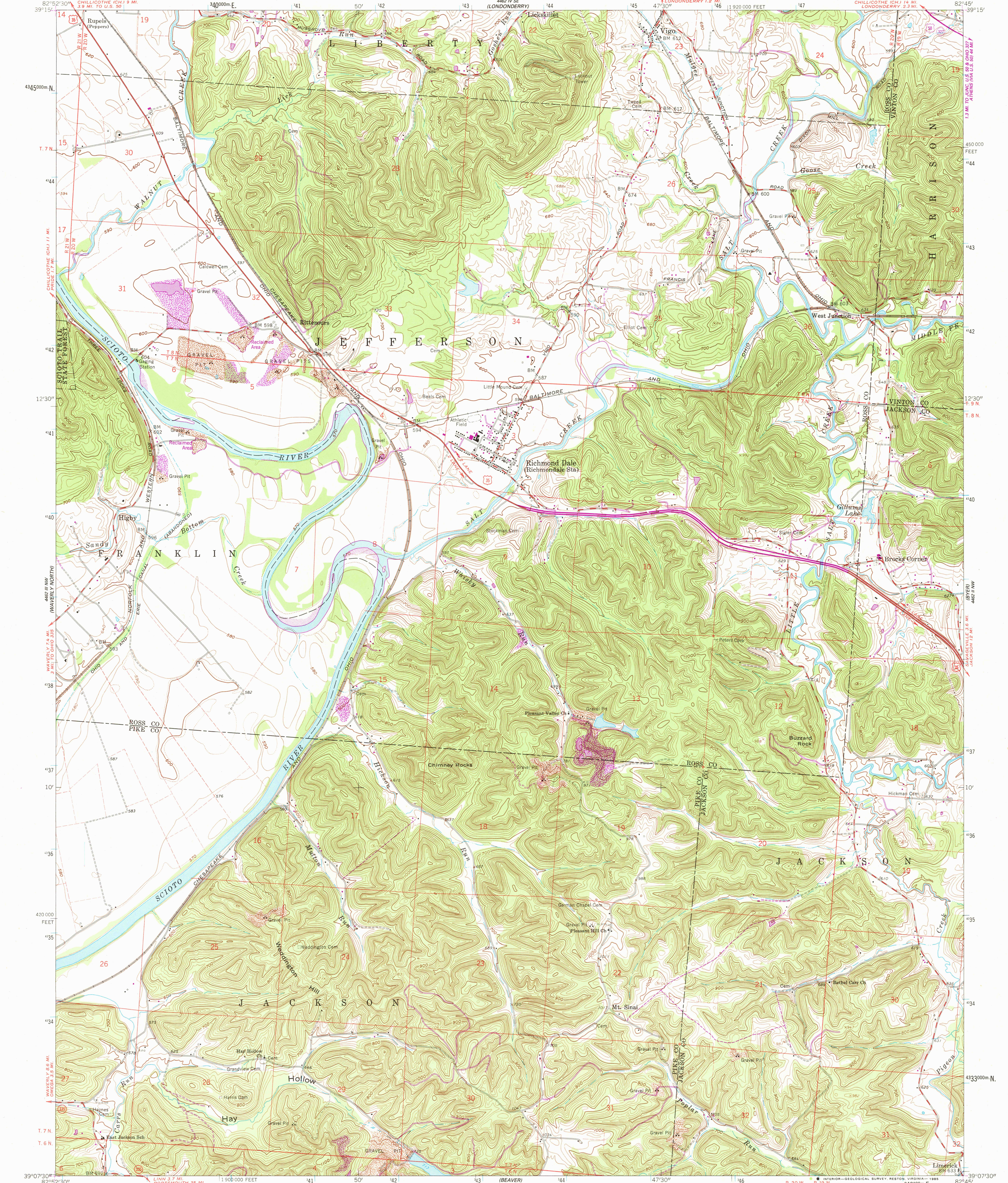
CHILLICOTHE EAST

UNITED STATES
DEPARTMENT OF THE INTERIOR
GEOLOGICAL SURVEY

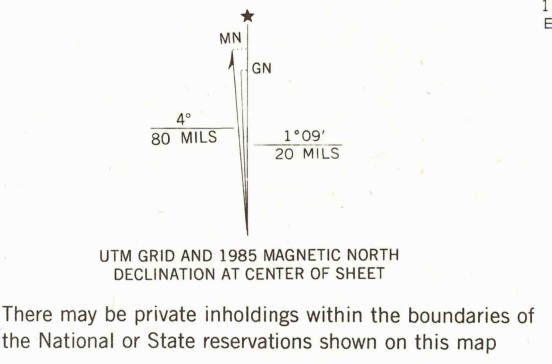
STATE OF OHIO
DEPARTMENT OF HIGHWAYS
DEPARTMENT OF NATURAL RESOURCES
DIVISION OF GEOLOGICAL SURVEY

RICHMOND DALE QUADRANGLE
OHIO
7.5 MINUTE SERIES (TOPOGRAPHIC)

CHILLICOTHE WEST



Mapped, edited, and published by the Geological Survey
Control by USGS and USC&GS
Topography by photogrammetric methods from aerial
photographs taken 1960. Field checked 1961
Polyconic projection. 1927 North American datum
10,000-foot grid based on Ohio coordinate system, south zone
1000-meter Universal Transverse Mercator grid ticks,
zone 17, shown in blue
Area east of the Scioto River lies within Congress Lands east of
the Scioto River. Land lines based on the Ohio River Base
Area west of the Scioto River lies within
the Virginia Military District
To place on the predicted North American Datum 1983,
move the projection lines 4 meters south and
10 meters west as shown by dashed corner ticks



CONTOUR INTERVAL 20 FEET
DOTTED LINES REPRESENT 10-FOOT CONTOURS
NATIONAL GEODETIC VERTICAL DATUM OF 1929
THIS MAP COMPLIES WITH NATIONAL MAP ACCURACY STANDARDS
FOR SALE BY U.S. GEOLOGICAL SURVEY, RESTON, VIRGINIA 22092
A FOLDER DESCRIBING TOPOGRAPHIC MAPS AND SYMBOLS IS AVAILABLE ON REQUEST

Revisions shown in purple compiled in cooperation with
State of Ohio agencies from aerial photographs taken
1983. This information not field checked. Map edited 1985
1961
PHOTOREVISED 1985
DMA 4462 III NE-SERIES V852
ROAD CLASSIFICATION
Heavy-duty ——— Light-duty ———
Medium-duty ——— Unimproved dirt ———
U.S. Route ——— State Route ———
RICHMOND DALE, OHIO
39082-87-TF-024

RETURN TO:
USGS AND HISTORICAL MAP ARCHIVES