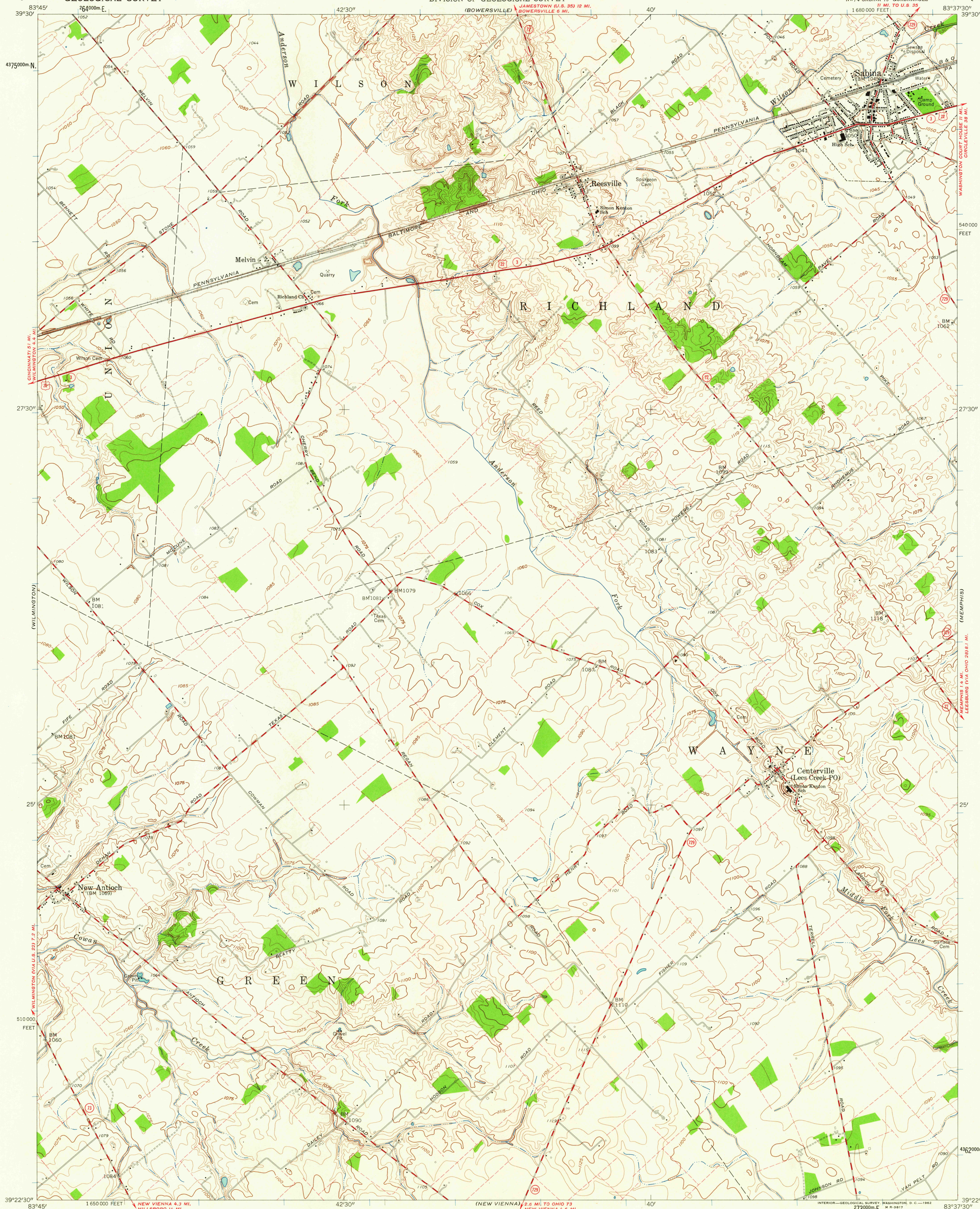


UNITED STATES
DEPARTMENT OF THE INTERIOR
GEOLOGICAL SURVEY

STATE OF OHIO
DEPARTMENT OF HIGHWAYS
DEPARTMENT OF NATURAL RESOURCES
DIVISION OF GEOLOGICAL SURVEY

SABINA QUADRANGLE
OHIO-CLINTON CO.
7.5 MINUTE SERIES (TOPOGRAPHIC)
NW 1/4 SABINA 15' QUADRANGLE
1:625,000 FEET



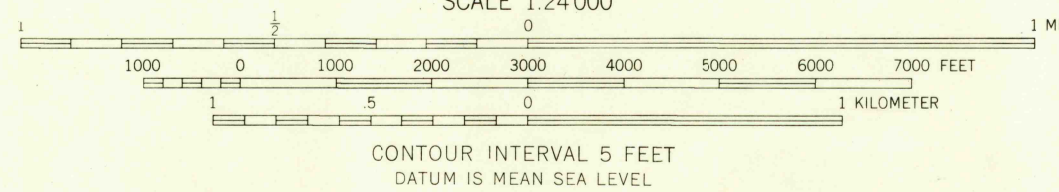
Mapped, edited, and published by the Geological Survey
Control by USGS and USC&GS

Planimetry by photogrammetric methods from aerial photographs
taken 1959. Topography by planetable surveys 1961

Polyconic projection, 1927 North American datum
10,000-foot grid based on Ohio coordinate system, south zone
1000-meter Universal Transverse Mercator grid ticks,
zone 17, shown in blue

Fine red dashed lines indicate selected fence and field lines where
generally visible on aerial photographs. This information is unchecked
Entire area lies within the Virginia Military District

TRUE NORTH
MAGNETIC NORTH
APPROXIMATE MEAN
DECLINATION, 1961



THIS MAP COMPLIES WITH NATIONAL MAP ACCURACY STANDARDS
FOR SALE BY U.S. GEOLOGICAL SURVEY, WASHINGTON 25, D. C.
A FOLDER DESCRIBING TOPOGRAPHIC MAPS AND SYMBOLS IS AVAILABLE ON REQUEST

ROAD CLASSIFICATION
Heavy-duty ——— Light-duty ———
Medium-duty ——— Unimproved dirt ———
U.S. Route ——— State Route ———



SABINA, OHIO
NW 1/4 SABINA 15' QUADRANGLE
N 3922.5—W 8337.5/7.5

1961
COPY
TOPOGRAPHIC DIVISION
DEC 12 1962