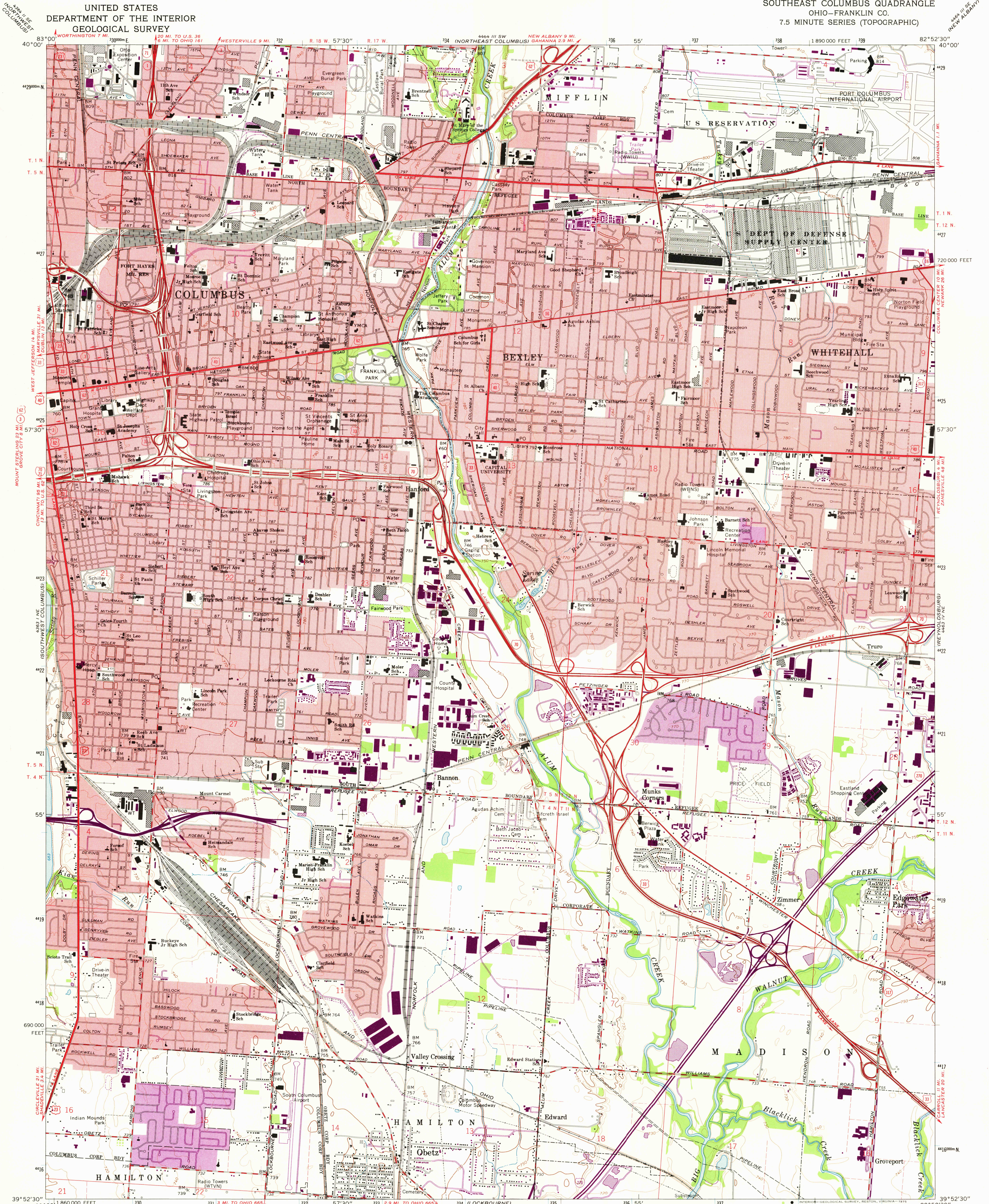
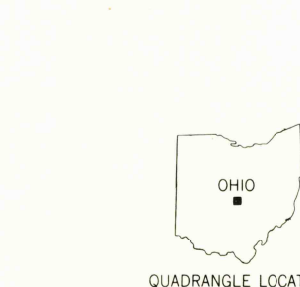
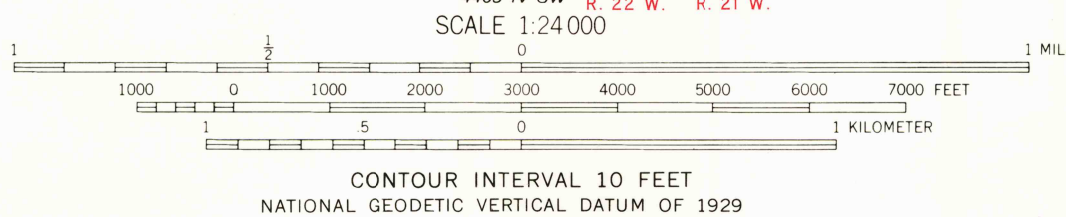


UNITED STATES
DEPARTMENT OF THE INTERIOR
GEOLOGICAL SURVEY

SOUTHEAST COLUMBUS QUADRANGLE
OHIO-FRANKLIN CO.
7.5 MINUTE SERIES (TOPOGRAPHIC)



Mapped, edited, and published by the Geological Survey
Revised in cooperation with State of Ohio agencies
Control by USGS, USCGS, and City of Columbus
Planimetry by photogrammetric methods from aerial photographs taken
1953 and 1954. Topography by planimetric surveys 1955. Revised 1964
Polyconic projection, 1927 North American datum
10,000 foot grid based on Ohio coordinate system, south zone
1000-meter Universal Transverse Mercator grid ticks,
zone 17, shown in blue
Fine red dashed lines indicate selected fence and field lines where
generally visible on aerial photographs. This information is unchecked
Red tint indicates areas in which only landmark buildings are shown
Area north of Base Line lies within the United States Military District
Land south of Base Line lies within Congress Lands east of the Scioto River
Land south within Ts. 4 and 5 N.-R. 22 W. based on the Scioto River Base
Land lines within Ts. 11 and 12 N.-R. 21 W. based on the Ohio River Base



ROAD CLASSIFICATION

Heavy-duty	Light-duty
Medium-duty	Unimproved dirt
Interstate Route	U.S. Route
	State Route

SOUTHEAST COLUMBUS, OHIO FEB 10 1975

N3952.5-W8252.5/7.5

Revisions shown in purple compiled in cooperation with
State of Ohio agencies from aerial photographs taken
1973. This information not field checked
Purple tint indicates extension of urban areas

1964
PHOTOGRAPHED 1973
AMS 4465 IV NW-SERIES V852
USGS
Historical File
Topographic Division
3140