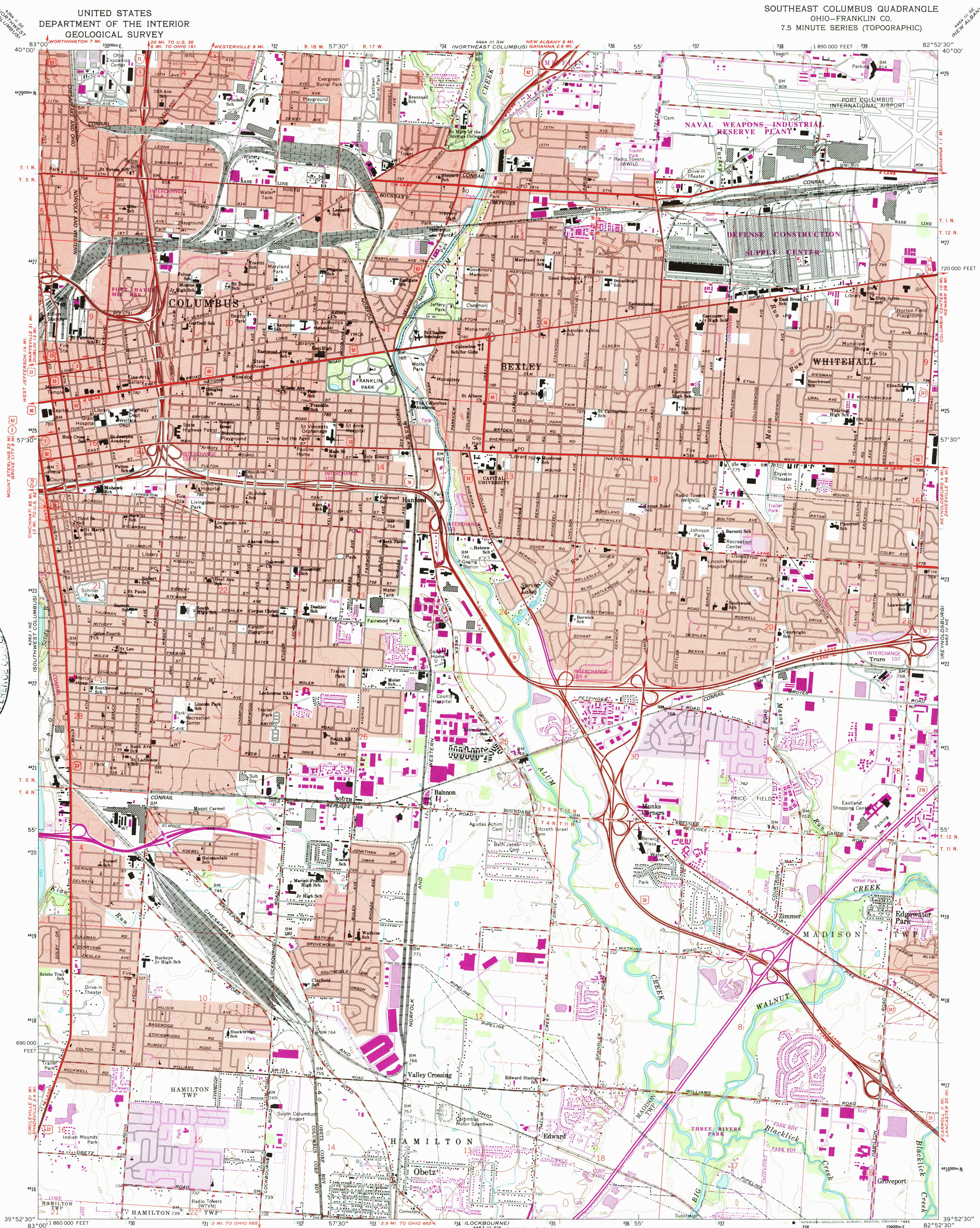


UNITED STATES  
DEPARTMENT OF THE INTERIOR  
GEOLOGICAL SURVEY

SOUTHEAST COLUMBUS QUADRANGLE  
OHIO—FRANKLIN CO.  
7.5 MINUTE SERIES (TOPOGRAPHIC)

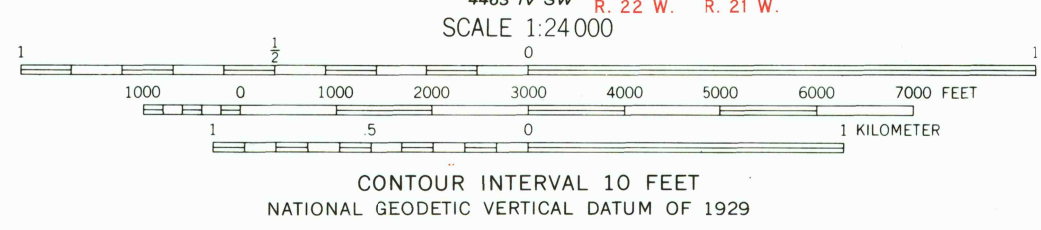


OCT 18 1985  
REFERENCE SEARCH

RETURN TO:  
USGS AND HISTORICAL MAP ARCHIVES

Mapped, edited, and published by the Geological Survey  
Revised in cooperation with State of Ohio agencies  
Planimetry by photogrammetric methods from aerial photographs taken  
1953 and 1954. Topography by planimetric surveys 1955. Revised 1964  
Polyconic projection. 1927 North American datum  
10,000-foot grid based on Ohio coordinate system, south zone  
1000-meter Universal Transverse Mercator grid ticks,  
zone 17, shown in blue  
To place on the predicted North American Datum 1983,  
move the projection lines 3 meters south and 10 meters west  
as shown by dashed corner ticks  
There may be private inholdings within the boundaries of  
the National or State reservations shown on this map  
Red tint indicates areas in which only landmark buildings are shown  
Area north of Base Line lies within the United States Military District  
Land lines based on the Base Line of the United States Military District  
Area south of Base Line lies within Congress Lands east of the Scioto River  
Land lines within T. 4 and 5 N., R. 22 W. based on the Scioto River Base  
Land lines within T. 11 and 12 N., R. 21 W. based on the Ohio River Base

UTM GRID AND 1985 MAGNETIC NORTH  
DECLINATION AT CENTER OF SHEET



ROAD CLASSIFICATION  
Heavy-duty ——— Light-duty ———  
Medium-duty ——— Unimproved dirt ———  
Interstate Route U.S. Route State Route

SOUTHEAST COLUMBUS, OHIO  
39082-H8-TF-024

THIS MAP COMPLIES WITH NATIONAL MAP ACCURACY STANDARDS  
FOR SALE BY U.S. GEOLOGICAL SURVEY, RESTON, VIRGINIA 22092  
A FOLDER DESCRIBING TOPOGRAPHIC MAPS AND SYMBOLS IS AVAILABLE ON REQUEST

Revisions shown in purple compiled in cooperation with  
State of Ohio agencies from aerial photographs taken  
1983. This information not field checked. Map edited 1985  
Purple tint indicates extension of urban areas

1964  
PHOTOREVISED 1985  
DMA 4463 IV NW-SERIES V852