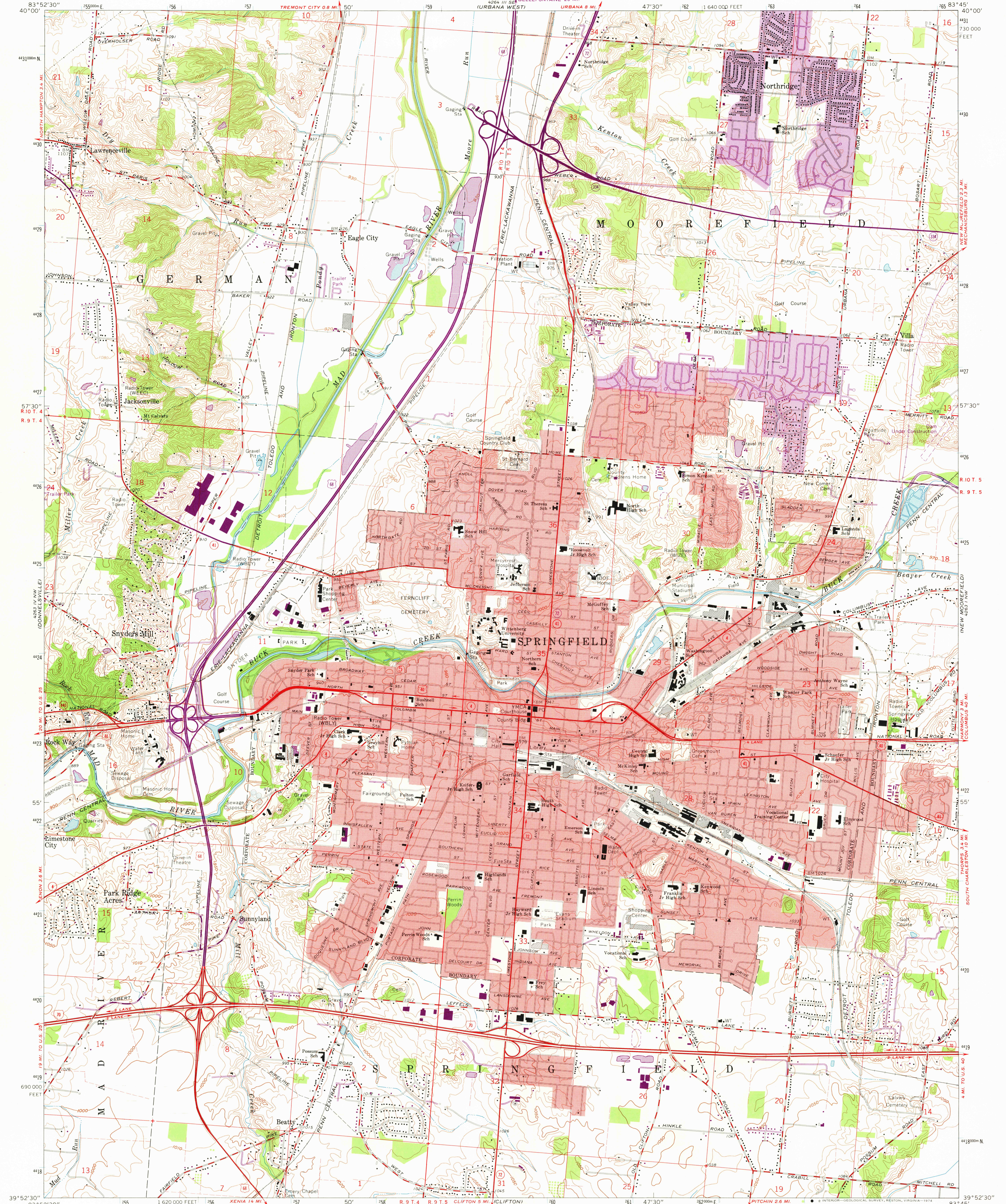


83°52'30" W
40°00' N

UNITED STATES
DEPARTMENT OF THE INTERIOR
GEOLOGICAL SURVEY

SPRINGFIELD QUADRANGLE
OHIO—CLARK CO.
7.5 MINUTE SERIES (TOPOGRAPHIC)

83°52'30" W
40°00' N



Maped, edited, and published by the Geological Survey in cooperation with the Army Map Service. Revised in cooperation with State of Ohio agencies. Control by USGS and USC&GS.

Topography by photogrammetric methods from aerial photographs taken 1954. Field checked 1955. Revised 1966.

Polyconic projection. 1927 North American datum 10,000-foot grid based on Ohio coordinate system, south zone 1000-meter Universal Transverse Mercator grid ticks, zone 17, shown in blue.

Fine red dashed lines indicate selected fence and field lines where generally visible on aerial photographs. This information is unchecked.

Red tint indicates areas in which only landmark buildings are shown.

Entire area lies within the Between the Miamis Land Lines based on the Great Miami River Base.

UTM GRID AND 1973 MAGNETIC NORTH DECLINATION AT CENTER OF SHEET

SCALE 1:24,000

CONTOUR INTERVAL 10 FEET
DATUM IS MEAN SEA LEVEL

THIS MAP COMPLIES WITH NATIONAL MAP ACCURACY STANDARDS FOR SALE BY U.S. GEOLOGICAL SURVEY, RESTON, VIRGINIA 22092. A FOLDER DESCRIBING TOPOGRAPHIC MAPS AND SYMBOLS IS AVAILABLE ON REQUEST.

Revisions shown in purple compiled in cooperation with State of Ohio agencies aerial photographs taken 1973. This information not field checked. Purple tint indicates extension of urban areas.

ROAD CLASSIFICATION

- Heavy-duty
- Medium-duty
- Light-duty
- Unimproved dirt

Interstate Route U.S. Route State Route

USGS Historical File Topographic Division

SPRINGFIELD, OHIO

N3952.5—W8345/7.5

1966 PHOTOREVISED 1973 AMS 4263 IV NE—SERIES V852

FEB 12 1975

1/31/75
504P
150P
4495