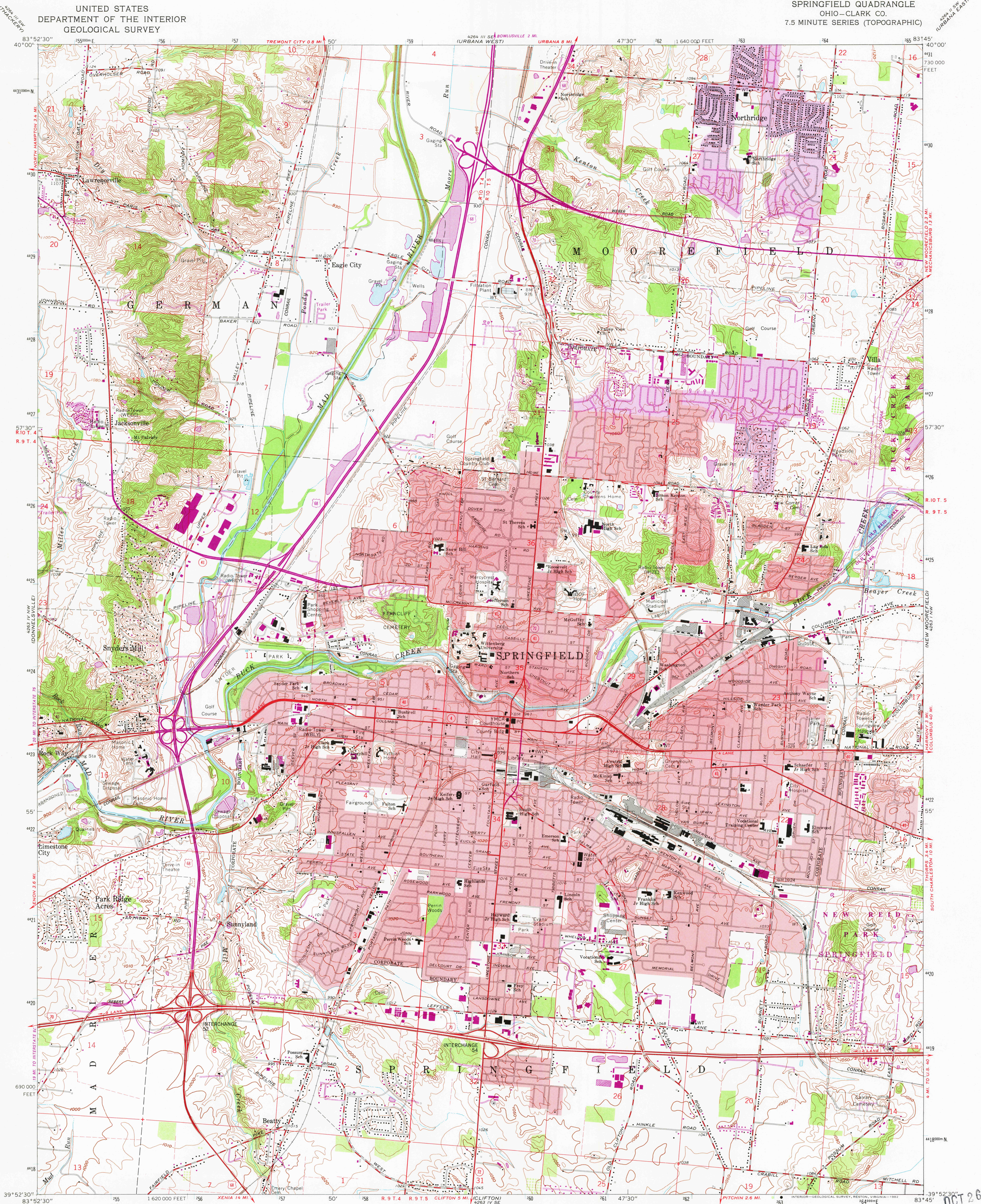
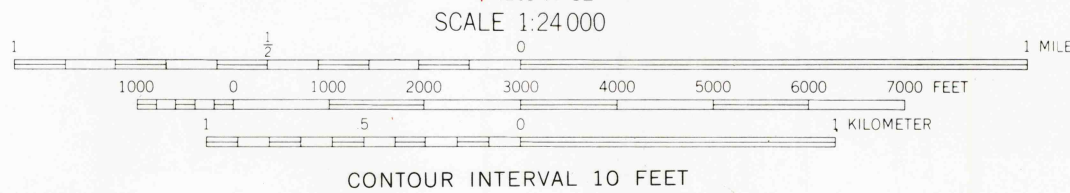
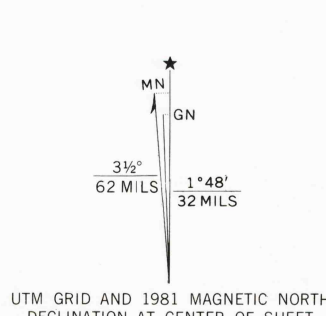


UNITED STATES
DEPARTMENT OF THE INTERIOR
GEOLOGICAL SURVEY

SPRINGFIELD QUADRANGLE
OHIO-CLARK CO.
7.5 MINUTE SERIES (TOPOGRAPHIC)



Mapped, edited, and published by the Geological Survey
in cooperation with Defense Mapping Agency
Revised in cooperation with State of Ohio agencies
Control by USGS and NOS/NOAA
Topography by photogrammetric methods from aerial photographs
taken 1954. Field checked 1955. Revised 1966
Polyconic projection. 10,000-foot grid ticks based on Ohio
coordinate system, south zone. 1000-meter Universal Transverse
Mercator grid ticks, zone 17, shown in blue. 1927 North American
Datum. To place on the predicted North American Datum 1983
move the projection lines 2 meters south and 7 meters west as
shown by dashed corner ticks
Fine red dashed lines indicate selected fence and field lines where
generally visible on aerial photographs. This information unchecked
Red tint indicates areas in which only landmark buildings are shown
Entire area lies within the Between the Miamis
Land lines based on the Great Miami River Base
There may be private inholdings within the boundaries
of the National or State reservations shown on this map



THIS MAP COMPLIES WITH NATIONAL MAP ACCURACY STANDARDS
FOR SALE BY U. S. GEOLOGICAL SURVEY, RESTON, VIRGINIA 22092
A FOLDER DESCRIBING TOPOGRAPHIC MAPS AND SYMBOLS IS AVAILABLE ON REQUEST

Revisions shown in purple and woodland compiled in cooperation
with State of Ohio agencies from aerial photographs taken
1979 and other sources. This information not field checked
Map edited 1981
Purple tint indicates extension of urban areas

ROAD CLASSIFICATION
Heavy-duty ——— Light-duty ———
Medium-duty ——— Unimproved dirt ———
Interstate Route U. S. Route State Route



SPRINGFIELD, OHIO

N3952.5-W8345.7/7.5
1966
PHOTOREVISED 1981
DMA 4263 IV NE-SERIES V852

RETURN TO:
USGS AND HISTORICAL MAP ARCHIVES

OCT 26 1982